



CONNECTICUT STATE UNIVERSITY

P.O. Box 2008 • New Britain, Connecticut 06050 • (203) 827-7701

RESOLUTION

concerning

RECLASSIFICATION OF POSITION

ASSISTANT TO THE DIRECTOR OF DATA PROCESSING/ADMINISTRATOR III
to
ASSOCIATE DIRECTOR OF COMPUTER & INFORMATION SYSTEMS/ADMINISTRATOR IV

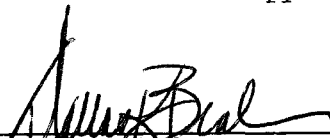
at

EASTERN CONNECTICUT STATE UNIVERSITY

FEBRUARY 6, 1987

RESOLVED, That the position, Assistant to the Director of Data Processing/Administrator III, at Eastern Connecticut State University, be reclassified to Associate Director of Computer & Information Systems/Administrator IV, effective February 13, 1987, in accordance with all provisions and expectations as set forth in the proposal dated December 10, 1987, attached as an addendum to this Resolution.

A Certified True Copy:



Dallas K. Beal
President

CSU-200

EASTERN CONNECTICUT STATE UNIVERSITY

DATE 12/10/86

POSITION ACTION REQUEST

 POSITION ACTION: ESTABLISH () RECLASSIFY (X) DATE EFF. 2/13/87 PERM(X) FT(X)
 ABOLISH () OTHER () TEMP() PT()

POSITION TITLE: Asst. Dir. Data Proc. (Ad. 3) Assoc. Dir. of Computer & Info. Systems (Ad. 4) 7919
 CURRENT CLASS CODE PROPOSED CLASS CODE

POSITION NUMBER 0085 CURRENT (30,840) SALARY 1,181.61 PROPOSED (35,000) SALARY 1,341.00 BARG UNIT SUOAF From SUOAF To
 FUND Gen.

RESOLUTION

BR# _____

RESOLVED, that the position, Assistant to the Director of Data Processing (Ad. 3) at Eastern Connecticut State University, be reclassified to Associate Director of Computer & Information Systems at Ad. 4 effective on 2/13/87.

A Certified True Copy _____

Dallas K. Beal, President Date _____

PERCommittee 1/28/87
 Date

BOARD OF TRUSTEES 2/6/87
 Date

JUSTIFICATION: With the additions of two new professional positions in the Data Center this year, the need has arisen for a clear-cut chain of authority and, in particular, a second in command, to help supervise the staff. Since the other three campuses have an Associate Director, we are seeking to use the same organizational model.

\$4,160.00
 Approx. Cost

SUOAF/AFSCME POSITION ACTION REQUEST
FORM AND PROCEDURES

Position Title Assoc. Director of Computer and Information Systems/Ad. 4
Campus Eastern Connecticut State University Date 12/10/86

LEVEL 1, Day 0 Campus DPA creates and presents package to Chapter level SUOAF/AFSCME designee for review. Attachments shall include the following items where applicable: 1) a copy of this sheet, 2) new and former position descriptions, 3) salary, rank, and rationale for PERC and the Board, and 4) any additional information required.

INITIATING PRESIDENT OR DESIGNEE Michael Pernal

DATE PRESENTED TO CAMPUS SUOAF REPRESENTATIVE 12/10/86

SUOAF/AFSCME CAMPUS REVIEW AND RECOMMENDATION BY Betty R. Tipton

DATE OF SUOAF CAMPUS REVIEW _____

THE ABOVE-MENTIONED PACKAGE HAS BEEN FORWARDED TO THE LOCAL UNION BY THE CAMPUS DPA.

LEVEL 2, Not to exceed 10 working days after receipt Statewide SUOAF/AFSCME review occurs during this interval. Further negotiation may occur at this level prior to final Union approval. Upon such approval SUOAF shall return all materials to the initiating University DPA or his designee.

SUOAF/AFSCME LOCAL PRESIDENT OR DESIGNEE Betty R. Tipton Date 12/18/86

DISPOSITION AT SUOAF LOCAL LEVEL:

approve proposed rank and salary

disapprove proposed rank and salary

Comments or Recommendations:

DATE RETURNED TO LOCAL DPA _____

LEVEL 3, Not to exceed 10 working days after receipt Local DPA brings paperwork to statewide DPA's meeting for review. If no further issues arise, the document is signed by and remains with the Vice President for Personnel. The Vice President for Personnel also provides a signed copy to the SUOAF/AFSCME Local President. If significant changes are required, documents are returned at Level 1. Minor changes may be effected by appropriate phone consultation.

DATE CONSIDERED BY DPA'S COUNCIL 1/15/87

DISPOSITION AT COUNCIL LEVEL:

approve submission to PERC

disapprove submission to PERC

Comments or Recommendations:

VICE PRESIDENT FOR PERSONNEL _____ DATE _____

LEVEL 4 Vice President for Personnel submits package to PERC at its next scheduled meeting. Upon PERC action it is the responsibility of the Campus DPA to inform the campus and Local SUOAF/AFSCME representative and appropriate management officials of PERC disposition.

DISPOSITION AT PERC LEVEL:

approved disapproved

DATE _____

DATE OF BOARD APPROVAL _____

DATE OF BOARD DISAPPROVAL _____

RECEIVED

THE STATE OF CONNECTICUT
STATE BOARD OF EDUCATION

EASTERN CONNECTICUT STATE UNIVERSITY
POSITION DESCRIPTION

POSITION TITLE: ASSOCIATE DIRECTOR OF COMPUTER AND INFORMATION SYSTEMS

ADMINISTRATIVE RANK: IV

Under the supervision of the Director of Computer and Information Systems, the Associate Director is responsible for the daily operation of the Data Center. Under guidelines established by the Director, the Associate Director commits data center resources to departments and other groups within the university community to accommodate specific requests and is responsible for the following:

1. Assumes responsibilities of the Director in his/her absence.
2. Manages daily information processing and production work scheduling at the data center.
3. Supervises data center staff as required.
4. Assists the Director with systems planning and research, user training and similar activities.
5. Provides technical support to Data Center staff and user offices.
6. Performs systems analysis, design, coding, documentation, and implementation.
7. Performs other duties and responsibilities related to those above which do not alter the basic responsibilities of the position.

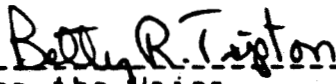
QUALIFICATIONS

Master's degree required. A minimum of four years experience in systems development and operations, a basic knowledge of data center operations.

The above qualifications may be waived for persons with appropriate alternate experience.



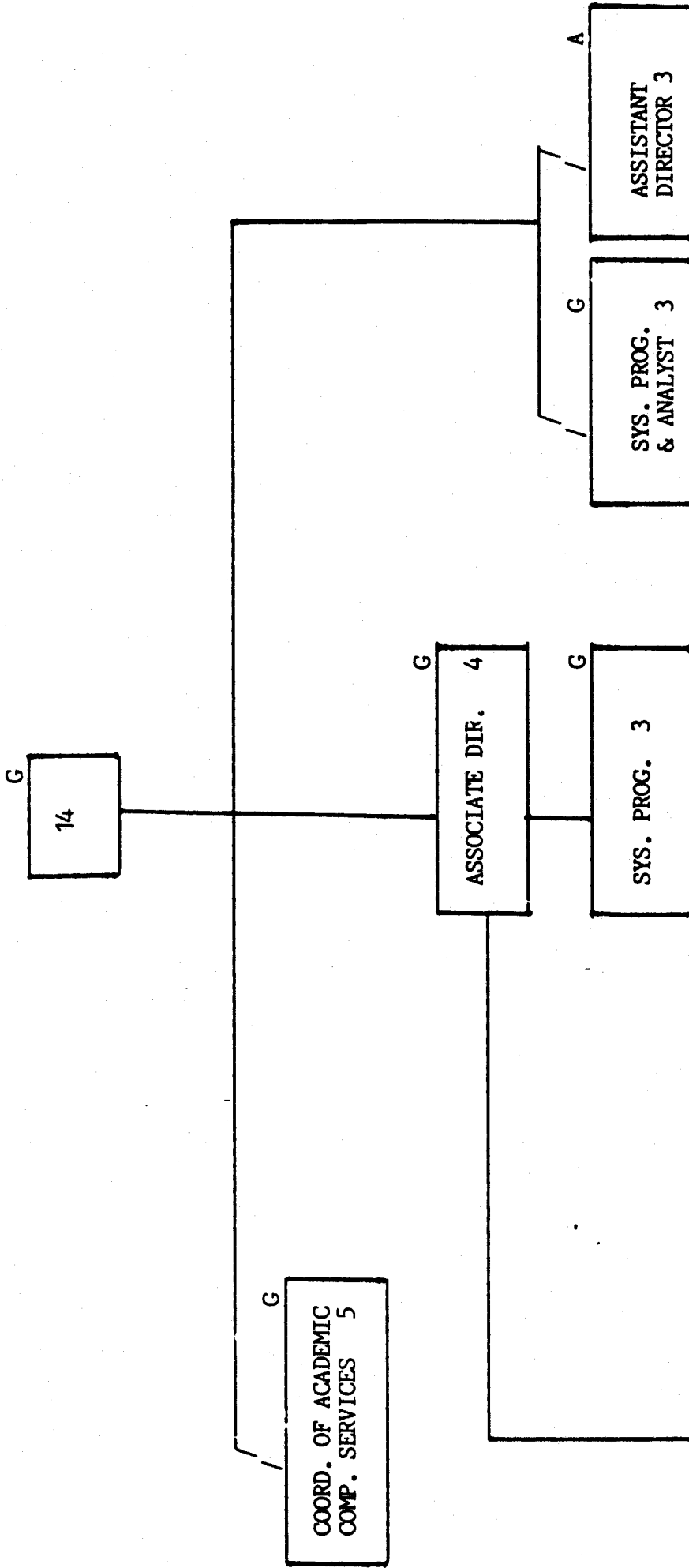
For the University 12/10/86
Date



For the Union 12/17/86
Date

12/10/86

DIRECTOR OF COMPUTER AND INFORMATION SYSTEMS



- COMPUTER OPERATOR 2 - G
- COMPUTER OPERATOR 2 - A
- DATA PROCESSING CONTROL CLERK - G
- DATA ENTRY OPERATOR 2 - G
- DATA ENTRY OPERATOR 1 KP - A