



Board of Regents

AGENDA

Finance & Infrastructure Committee

10:30 a.m. Wednesday, December 11, 2024

Conducted Remotely

Meeting will stream live at: <https://youtube.com/live/RhHo-IEt26k?feature=share>

- 1. **Call to Order and Declaration of Quorum**
- 2. **Approval of Previous Finance Meeting Minutes**
 - a. October 7, 2024.....Page 2
 - b. October 17, 2024.....Page 19
- 3. **Information Item**
 - a. BOR Finance Committee Preparation Calendar
- 4. **Action Items**
 - a. FY26 Tuition & Fees.....Page 25

Finance & Infrastructure Committee members

Richard J. Balducci, Chair
 Ari Santiago
 Erin Stewart
 Ted Yang

**BOARD OF REGENTS FOR HIGHER EDUCATION
CT STATE COLLEGES AND UNIVERSITIES (CSCU)
Minutes of Finance & Infrastructure Meeting
October 7, 2024
Conducted Via Remote Participation**

REGENTS - PARTICIPATING (Y = yes / N = no)	
Richard J. Balducci, Committee Chair	Y
Marty Guay, BOR Chair	Y
Ari Santiago	Y
Erin Stewart	N
Ted Yang	Y
*Charlene Casamento	Y
*Brendan Cunningham, FAC Chair	Y
*Colena Sesanker, Vice Chair FAC	Y
<i>*ex-officio, non-voting member</i>	

CSCU STAFF:

Zulma Toro, President, Central CT State University
 John Maduko, President, CT State Community College
 Lloyd Blanchard, VP of Administration / Chief Financial Officer
 Keith Epstein, VP for Facilities, Real Estate & Infrastructure Planning
 Adam Joseph, Vice Chancellor of External Affairs
 Kerry Kelley, VP of Finance & Administration, CT State Community College
 Melentina Pusztay, Director of Budgets and Planning
 Rachel Cunningham, Admin Assistant to Lloyd Blanchard (recorder)
 Pamela Heleen, Secretary of the Board of Regents

GUESTS:

Michael Piscitelli, Economic Development Administrator, City of New Haven

CALL TO ORDER:

Committee Chair Balducci called the meeting to order at 10:30 a.m. Following the roll call, Rachel Cunningham recorded a quorum present. Prof Sesanker joined at 11:07 a.m.

APPROVAL OF PREVIOUS MEETING MINUTES:

Chair Balducci requested a motion to accept the minutes of the June 12, 2024 meeting, moved by Regent Santiago, and seconded by Regent Yang, which was approved by a unanimous vote.

INFORMATION ITEMS:

Update on Reinstatement of Student Services

Chair Balducci welcomed Pres Maduko & CFO Kelley to provide an update on the progress and steps currently underway (Attachment A). Presentation & discussion are highlighted from the YouTube recording [timestamp 2:35-22:19](#).

Q: Chair Balducci & Chair Guay asked for the presentation to be shared via email.

Pres Maduko stated they will share the presentation and there will be a dedicated public webpage with all the shared governance information.

Q: Prof Cunningham commended the shared governance efforts and asked when the adjustments of reinstatement of services would take place.

Pres Maduko responded CT State will act as fast as possible once the plan is adopted; they plan to implement it between the end of the Fall semester and the beginning of the Spring semester.

Chair Balducci suggested implementing it in January to ensure services are rolled out properly.

C. Casamento commented that a CCSU emergency student funding process was implemented predominately funded by the foundation, which may be a helpful tool, and that during her 10 years working in the system funds paid by students in the UPass program were intended to further develop routes that serve the students.

Pres Maduko responded they will continue conversations with each of the 12 foundations to develop partnerships; they are having conversations with ride-share programs like Uber to pilot discount rides to meet the needs of the students.

Regent Yang & Chair Guay summarized the importance of sustainability for the services being reinstated.

CFO Kelley provided details about the process of development surrounding the sustainability of the recommendations in compliance with the deficit mitigation plans for student-facing services.

P. Heleen provided an update that there will be a Special ASA & Finance Committee added to review the final plan before it is presented to the full board in November.

Long Wharf MOA

K. Epstein highlighted the background of the legislation passed by the CT General Assembly, the status of the MOA for Long Wharf, and the planned development with the State and City of New Haven. ([timestamp 22:20-26:04](#))

Accountability Report

CFO Blanchard described what the report shows for the entire CSCU system and each institution. ([timestamp 26:15-50:24](#))

Q: Chair Balducci asked if the \$14.4 million was given to us from the state based on the SEBAC contract.

CFO Blanchard explained the funds are a portion of the SEBAC wage increase. The Accountability Report will be updated to reflect the funds, but the baseline report needed to start with what had been approved.

Q: Chair Guay asked about the timing of when the money comes in from the state as it relates to a contract period vs. the timing of our allotments and costs.

CFO Blanchard responded that the CSCU system is always operating in 3 fiscal years, currently auditing FY24, in FY25, and planning 9 months for approval FY26 and FY27.

C. Casamento provided an update on the actual timing from OPM regarding the distribution of funds.

Chair Guay thanked C. Casamento for the update and stated they were verbally provided the information at the June 12th Finance meeting after all the materials had been distributed.

Q: Chair Balducci asked if OE/other expenses can be shown in more detail to explain what it's made up of.

CFO Blanchard stated that per institution it can be drilled down to show what the larger OE costs such as IT and utility costs.

C. Casamento commented it would be beneficial for the report to re-forecast enrollment based on where each institution will end up after the Fall semester as adjustments are made.

Q: Regent Yang asked if the report could show run rates based on enrollment, personnel headcount, and budgeted tuition revenue.

CFO Blanchard stated they can continue to update the report for the Regents.

Chair Guay & Regent Santiago commented that they don't want to add too many things to the original intent of the report and if there is a desire to see more, it can be applied when needed.

ACTION ITEMS:

Telecom License Agreement - CT State, Manchester

K. Epstein summarized the proposed resolution to enter a 5-year license agreement with Cingular Wireless for a 37-foot cellular antenna at CT State Manchester, with Cingular funding all costs and infrastructure improvements, including a 4% annual rent escalation and a potential 15-year extension. The project is part of the state's efforts to promote 5G installation on public land. ([timestamp 50:25-1:04:54](#))

Q: Regent Yang asked how the appropriate rate for the rental was determined.

K. Epstein responded that all cellular providers have a basic rate, and if escalation is necessary, it can be negotiated up to 4% on the term extension or terminated.

Q: Regent Santiago asked about the difference between the two installations and the amount of rent being charged.

K. Epstein compared the differences between the agreements due to the size of the infrastructure. At Manchester, it will be approximately the size of a light pole, while at

Eastern, it is a much larger space that includes the use of an air-conditioned 10x20-foot building previously used by Nextel.

K. Epstein confirmed Regent Santiago's statement that the difference in the two contracts is that Cingular is doing the installation and maintaining it, essentially leasing the land; while the other lease is a pre-built capital infrastructure that CSU maintains and therefore, they are paying a higher amount.

Chair Balducci made a motion to adopt the resolution, seconded by Regent Yang, which was approved by a unanimous vote.

Telecom License Agreement – CSU, Eastern

K. Epstein Eastern Connecticut State University seeks approval from the Board of Regents to enter into a 20-year licensing agreement at 5-year increments with Verizon Wireless for the installation of nine-panel antennas and related equipment on its telecommunications tower. Verizon will fund all installation costs and improvements, paying an annual base fee starting at \$30,000 with a 2% increase each year. The agreement is expected to generate revenue for the university while improving cellular and data services on campus.

Prof Cunningham commented that there is a bandwidth congestion issue at Eastern in academic buildings when the students are on campus during peak times; the campus network can't handle the demand for Wi-Fi which forces students to rely on their personal cellular data who essentially pay for internet access. Furthermore, he asked for the tower space to go out to auction to yield better financial returns for the university.

Chair Guay thanked Prof Cunningham for his feedback and will have Regents Santiago and Yang take the conversation to the IT Committee emphasizing the need for improvements to both Wi-Fi infrastructure and cellular tower management to better support students and faculty at Eastern as well as all the CSU institutions.

Regent Santiago accepted the request for the IT Committee's review and clarified that the comment regarding the cell tower lease doesn't have any direct bearing on the Wi-Fi speeds at Eastern.

Chair Balducci requested and K. Epstein accepted that for future opportunities they will seek a competitive option via auction.

Chair Balducci made a motion to adopt the resolution, seconded by Regent Santiago, which was approved by a unanimous vote.

FY26/FY27 Biennium Operating & Capital Budget Request

CFO Blanchard summarized the Biennium Request as submitted every other year on Sept 1st for the Current Services Budget and Oct 1st for the Policy Options Budget (Attachment B) ([timestamp 1:05:01-1:49:19](#))

Q: Chair Balducci asked for clarification on the explanation in the Staff Report of the RSA (Reserve for Salary Adjustments) received after the board approved the Spending Plan and where the Baseline Operating Budget numbers come from.

CFO Blanchard explained that as with the Accountability Report, the RSA is highlighted to

show it was received after the budget was approved and that the \$14 million RSA is included in the Biennium Request. For the Baseline Budget Request numbers in the Staff Report, adjustments were continually being made up until last week as the work continued about what to ask for and what to mitigate, it should be stated as \$23 million and \$22 million.

CFO Blanchard provided a summary of the Capital Budget Request items that should essentially be funded for deferred maintenance for the facilities across the state and some special projects.

Q: Chair Balducci asked for a breakdown by institution for the \$233 million to be distributed for the CSUs and \$264 million for CT State.

CFO Blanchard stated the CSU projected distributions and that CT State's will be based on requests per campus, which can be provided at a later date by CFO Kelley.

Q: Prof Cunningham asked for clarification if the drawdown of reserves means the balance will go down.

CFO Blanchard confirmed the reserve balance will go down to the extent that surpluses are to be used.

C. Casamento asked if the use of reserves is a planful bridge to sustainability or a plug that will need to be addressed in the next biennium request.

CFO Blanchard confirmed the use of reserves is a bridge to address the shortfall in the temporary support from the state, in preparation for the expiration of ARPA dollars, and through deficit mitigation to get on track for sustainability in FY28 and beyond.

Regent Yang commented that the Capital Budget list has multiple items with a technology component that the IT Committee should review as part of the strategic planning they are in the process of developing.

CFO Blanchard highlighted the report was submitted on Oct 1st contingent on board approval and emphasized the timing is a challenge for these types of submissions and committed to a review with the IT Committee moving forward to reconcile the budget requests based on their recommendations.

Regent Yang commented he has not had the time to read through the items and/or discuss them in any detail and is not going to approve.

Chair Balducci stated the approval requested today is to move forward to the full board meeting on October 24th and that the committee has up until then to make suggestions on additions, deletions, or amendments.

Regent Santiago stated that this is a process issue, which the committee needs to address in advance of bringing it to the full board meeting.

CFO Blanchard explained that the Capital Budget list comes from master planning and projections with modifications submitted directly from the institutions based on their priorities in terms of Capital investments.

Regent Yang reiterated any information being submitted that requires approval from the board needs to happen earlier than the submission date and is requesting an additional meeting to be added for more time to review the information before going to the full board.

CFO Blanchard stated he will work to revise the process.

P. Heleen proposed adding this item to the Special Finance Committee to be scheduled in November and asked if there are any timing deadlines that need to be adhered to as the submission has already gone to OPM contingent on BOR approval.

Regent Santiago commented he is supportive of delaying the item as long as it doesn't have any negative consequences to the system either in terms of our inclusion in the appropriate OPM budget, or critical infrastructure support delays that would damage the ability for students to get services or faculty to deliver classes.

C. Casamento recommended that an official request be sent to Mike Izadi's attention at OPM, who can provide a due date for how late any proposed changes to the report can be submitted.

Chair Balducci accepted the recommendation to move the item to the next meeting and encouraged further discussion with CFO Blanchard to resolve any questions before moving to the full board.

Chair Balducci requested a motion to move the Budget item to a future meeting, seconded by Regent Yang, which was approved by a unanimous vote.

Chair Balducci requested a motion to adjourn, Regent Santiago seconded, and following a unanimous vote the meeting adjourned at 12:20 p.m.



Progress Report on Board Resolution to Restore Student Facing Services

October 7, 2024

Your Community. Your College.



CT STATE | WHO WE SERVE

COMMUNITY COLLEGE

In July of 2023, CT State became the **LARGEST COLLEGE** in Connecticut. Currently enrolling **64,883** students.

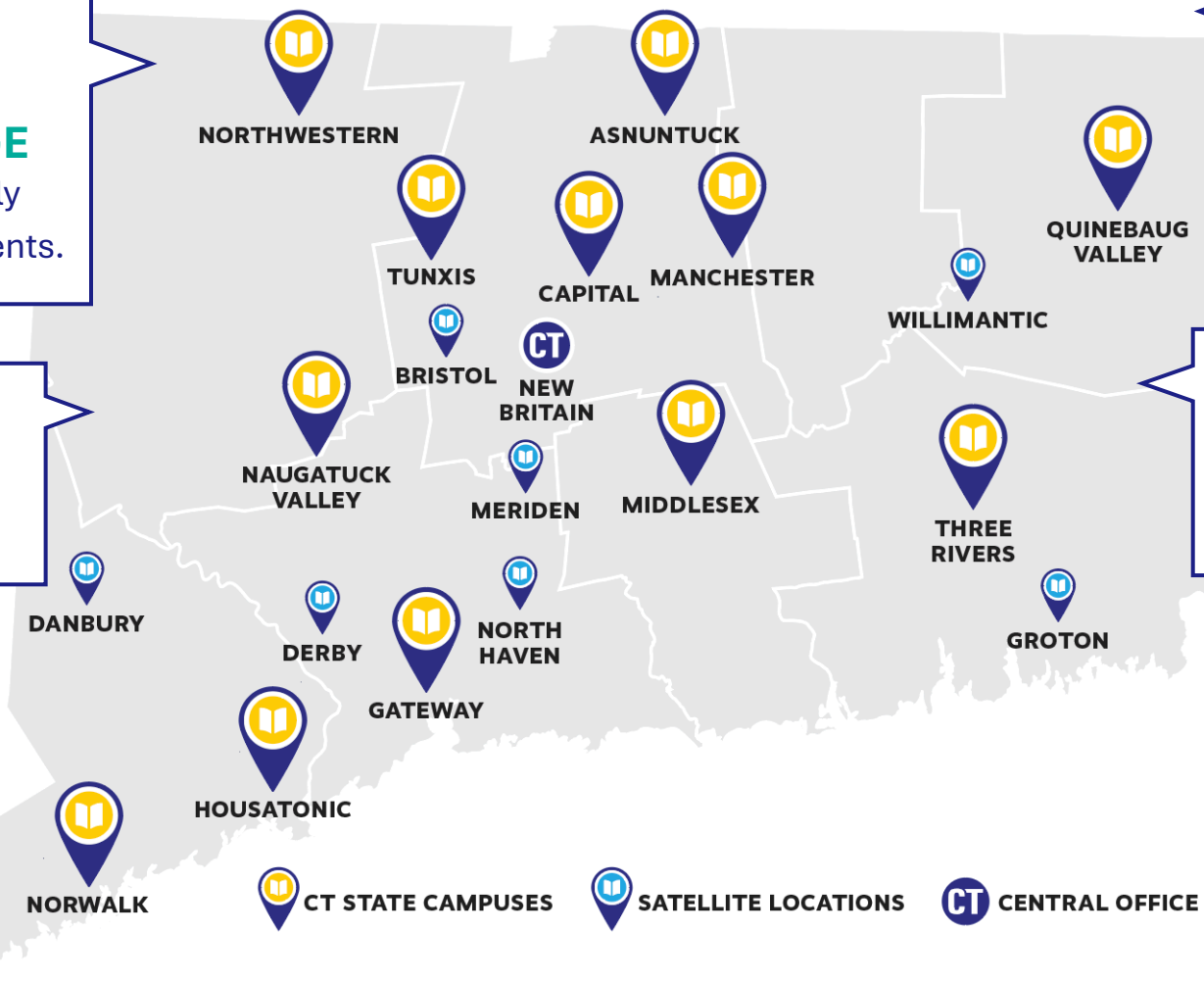
Connecticut's community colleges have a 60-year history of educating **250,000** alumni.

We serve **25%** of all undergraduate students in Connecticut.

Over **90%** of our alumni remain in Connecticut and are Connecticut taxpayers.

We serve over **5,000** dual-enrolled high school students.

57% are students of color; we are a minority-majority institution.





Credit Student Profile



300

Credit Programs

15:1

Student to Faculty Ratio

221:1

Student to Advisor Ratio

40,320

Are Degree-Seekers

Others are pursuing a certificate or short-term workforce training.

27,166

Are First Generation Students

38,829

Attend Part-Time

27,952

Are Students of Color

We are a minority-majority institution.

30,000

Work While Going to School

6,300 are parents attending school.

11,000

Are Latine

Five of our campuses are Hispanic-serving institutions.

15,071

Attend Classes at More Than One CT State Campus

(up from about 600 per term pre-merger)

2,500

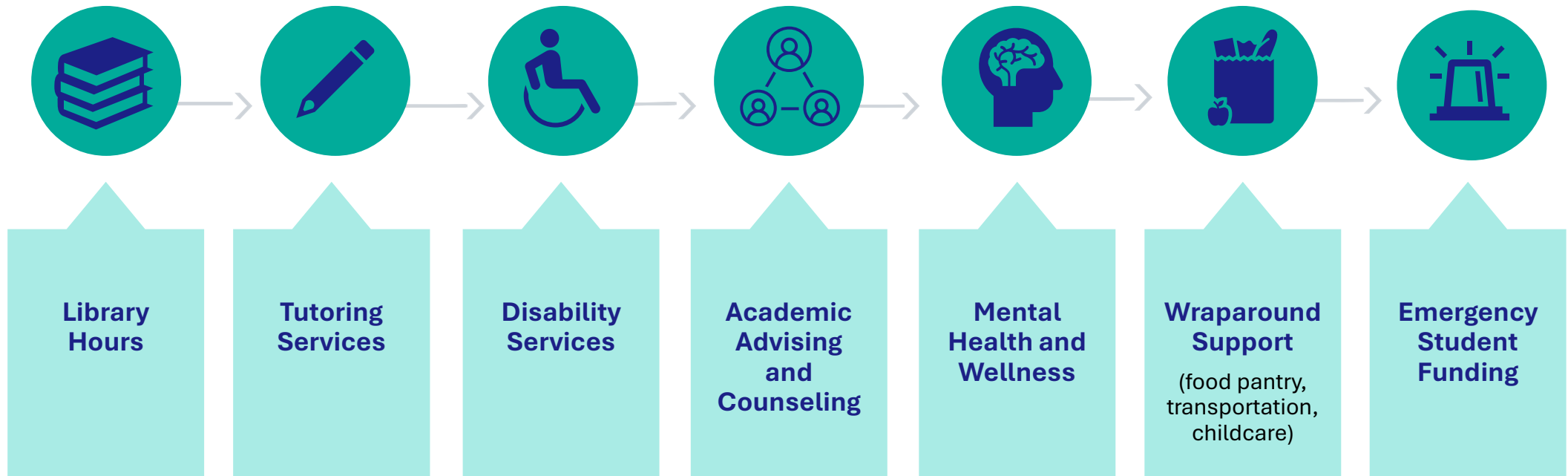
Have a Disability or Accommodation Needs

98% of CT State students are from Connecticut, representing all CT school districts.

Resolution to Restore Student Facing Services

The Board directed CT State to develop a plan to strategically restore student services affected by the FY 24 & 25 deficit mitigation

Plan should prioritize the key student services such as:





The CT State Plan Will

- Align with CT State's strategic priorities and goals
- Leverage the Holistic Student Support Surveys on student needs & challenges
- Recognize that no two years are the same & analyze the makeup of the student body and how they access our campuses/offerings
- Honor our Principles of Shared & Participatory Governance
- Provide a timeline for implementation
- Identify a funding source
- Be transparent

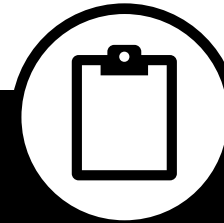
▶▶ CT State Progress in Developing the Plan



Campus leaders have engaged with local stakeholder groups to identify student needs



Initial recommendations submitted on 9/27/24
Finance Division is analyzing the cost for each



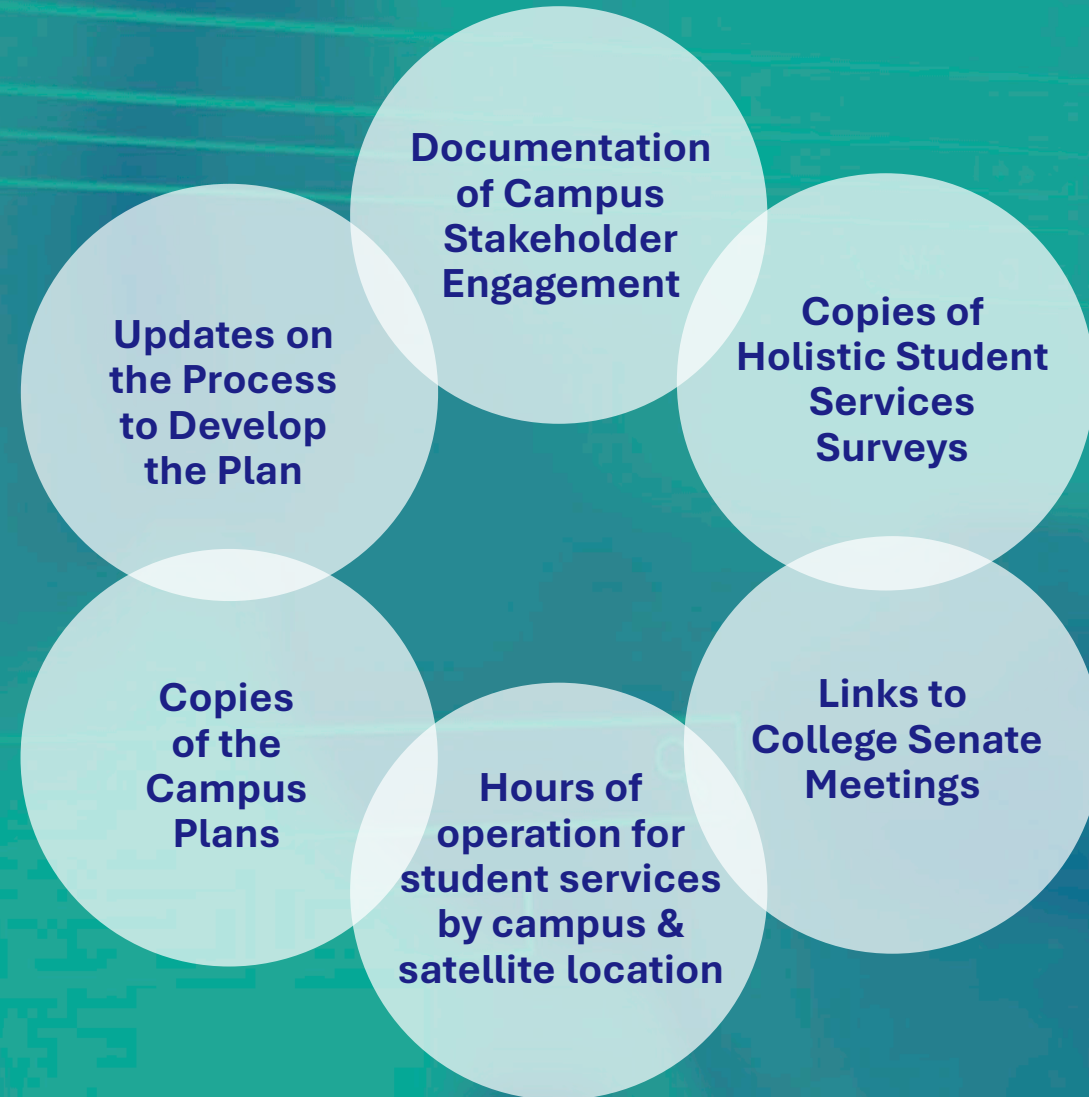
CT State completed a survey on the Hours of Operation by for student facing services by campus and satellite location



With support from College Senate leaders, the timeline to develop the plan was extended to allow for statewide shared governance

CT State is Committed to Transparency

The college has established a webpage that will contain:





Thank You

CT STATE
COMMUNITY COLLEGE



FY26/FY27 Biennium Request

- Our request is \$60M less than what we received in FY25.
- FY25 appropriations include block grant, legislative initiatives, and temporary support.
 - We expect reduction of \$156M in temporary support based on OPM guidance.
- SEBAC wage increases for FY26 & FY27 are not included.

<i>(\$millions)</i>	FY25	FY26	FY27
CSUs	185.1	233.8	233.8
CT State	225.3	264.6	264.3
Charter Oak	3.3	5.4	5.4
BOR	.5	.5	.5
Developmental education	10.2	10.2	10.2
Outcome-based funding	1.4	1.4	1.4
O'Neill chair	.3	.3	.3
PACT	28.5	34.2	34.2
Other	-	.7	.7
Temporary support	156.3	-	-
Total Baseline Budget Request	610.9	551.1	550.8



Deficit mitigation

- Planned deficit mitigation is \$95M.
- FY26
 - Expenditure reduction = \$39.7M
 - Reserves = \$55.2M
- FY27
 - Expenditure reduction = \$37.0M
 - Reserves = \$58.1M

<i>(\$millions)</i>	FY26	FY27
Central	7.0	5.8
Eastern	2.1	2.1
Southern	8.6	7.8
Western	11.4	11.2
CT State	60.0	62.9
Charter Oak	1.8	1.3
System Office	4.0	4.0
Deficit mitigation	(94.9)	(95.1)



Projections

- We are asking the State to cover remaining projected deficits after mitigation.
- FY26
 - Request \$23.0M
- FY27
 - Request \$21.6M

<i>(\$millions)</i>	FY26	FY27
Central	-	-
Eastern	(6.4)	(7.3)
Southern	(9.8)	(6.4)
Western	(10.8)	(12.1)
CT State	-	-
Charter Oak	-	-
Project deficit after mitigation	(23.0)	(21.6)

**BOARD OF REGENTS FOR HIGHER EDUCATION
CT STATE COLLEGES AND UNIVERSITIES
(CSCU)**

**Minutes of Special Finance & Infrastructure Meeting
October 17, 2024**

Conducted Via Remote Participation

REGENTS - PARTICIPATING (Y = yes / N = no)	
Richard J. Balducci, Committee Chair	Y
Marty Guay, BOR Chair	Y
Ari Santiago	N
Erin Stewart	Y
Ted Yang	Y
*Charlene Casamento	N
*Brendan Cunningham, FAC Chair	Y
*Colena Sesanker, Vice Chair FAC	Y
<i>*ex-officio, non-voting member</i>	

CSCU STAFF:

Terrence Cheng, Chancellor
Lloyd Blanchard, VP of Administration / Chief Financial Officer
Keith Epstein, VP for Facilities, Real Estate & Infrastructure Planning
Adam Joseph, Vice Chancellor of External Affairs
Melentina Pusztay, Director of Budgets and Planning
Rachel Cunningham, Admin Assistant to Lloyd Blanchard (recorder)
Pamela Heleen, Secretary of the Board of Regents

CALL TO ORDER:

Committee Chair Balducci called the meeting to order at 2:06 p.m. Following the roll call, Rachel Cunningham recorded a quorum present.

ACTION ITEMS:

FY26/FY27 Biennium Operating & Capital Budget Request

Chair Balducci introduced CFO Blanchard to review the FY26/FY27 Biennium Request as submitted to OPM contingent on BOR approval. (Attachment A)

Regent Yang requested a point of personal privilege to express frustration about the budget process, particularly how it is being handled by the Committee and the Board. He feels that the Board should have been involved from the start of the budget process, not just at the end when it's being presented for approval after already being submitted to the State and emphasizes that this lack of involvement undermines good governance.

Additionally, Regent Yang raised concerns about the State's demographic trends, declining enrollment, and the need for better student outcomes, particularly in light of issues like mental health. He stated the budget doesn't reflect the necessary resources for addressing these issues, as no input was sought from the Board on key decisions. While acknowledging reductions

in administrative costs, he still feels more could be done to improve the budget, especially in terms of reallocating resources to programs that better serve students' needs. Despite agreeing to approve the budget, he does so reluctantly and with strong protest.

Chair Balducci thanked him for the comments and acknowledged changes will be made for the next fiscal year.

CFO Blanchard agreed that changes will be made moving forward to build and allot more time for the Committees to review the information and provide feedback.

Q: Prof Sesanker asked who was involved in developing the proposed budget and what information was solicited. She asked that the FAC Committee be involved in future conversations.

CFO Blanchard explained the budget process begins with general guidance provided to the institutions. This guidance includes the new strategic framework focused on access, completion, and talent, along with instructions to keep tuition flat and maintain steady enrollment. The institutions then use their governance processes to create their budget requests, which are submitted to the system office. The system office compiles the requests and presents them to the board for approval.

Q: Prof Sesanker stated the deficits remain at Eastern, Southern, and Western and asked if that's where the cuts or mitigation will be coming from.

CFO Blanchard responded that each institution would mitigate their budgets.

Q: Prof Sesanker asked if the \$20 million that we might get as additional funds is taken into consideration and what the cost of the current services is.

CFO Blanchard responded we still do not know if the \$20 million will be allocated to CSCU and was therefore not included. The current services expenditure is approximately \$1.1 billion.

Prof Cunningham commented that there are broader issues related to enrollment decline and should not be blamed on specific disciplines.

Q: Prof Cunningham asked for clarification on the assumption that the budget for faculty raises will be zero, pointing out that this seems inconsistent with SEBAC and recent outcomes of wage negotiations.

CFO Blanchard responded that the standard guidance from OPM to all state agencies is not to assume increases as historically they will share some of the costs in the form of increasing the block grant to assist in covering the costs.

Q: Regent Yang how much of the excess reserves for CT State will be used for one-time expenses vs permanent expenses?

CFO Blanchard stated CFO Kelley would have further information regarding the share of the actual monies spent but is aware of the dangers of using reserves to fund permanent costs like personnel and that it is not sustainable.

Q: Regent Yang asked for elaboration on what the process for the Capital Budget submission is and why year after year it has been submitted without being funded.

K. Epstein provided an overview of the 29 budget requests, noting that some programs are regularly funded, while others, such as energy efficiency projects, are required by law but have never received funding. He emphasized that 7 of the projects have received design or construction authorization but have not been funded by the current governor and must remain listed.

Q: Regent Yang requested the list of budget requests to be split into 3 categories, default energy efficiency, committed by a prior legislature, but not funded, and new projects.

K. Epstein will categorize and send.

Regent Stewart expressed her gratitude for the contributions from everyone and acknowledged the frustrations in the budget process. She emphasized that the current process needs change and that the diverse experiences of the members, from both the government and private sectors, will help drive improvement. While recognizing that significant adjustments will take time, she stressed the importance of setting realistic timelines, prioritizing capital improvement projects, and ensuring that the budget reflects a clear, well-understood plan. Despite current challenges, she believes the group is on the right path for future progress.

Chair Guay agrees with the input from others and acknowledges that the process is in a transition period. He expressed dissatisfaction with the lack of collaboration and strong governance in the current budget process, stating that this must change moving forward. While recommending approval of the current plan, he emphasized the need to build a better schedule that allows for proper collaboration and alignment before future deadlines and believes the group is capable of working together effectively and strengthening the process.

Prof Cunningham provided an example of an incident on campus, which serves to demonstrate the importance of building infrastructure and the necessity for funding to come to provide safe reliable spaces for the students.

Chair Balducci made a motion to adopt the resolution, seconded by Regent Stewart, which was approved by a unanimous vote.

Chair Balducci requested a motion to adjourn, Regent Yang seconded, and following a unanimous vote the meeting adjourned at 2:47 p.m.



FY26/FY27 Biennium Request

- Our request is \$60M less than what we received in FY25.
- FY25 appropriations include block grant, legislative initiatives, and temporary support.
 - We expect reduction of \$156M in temporary support based on OPM guidance.
- SEBAC wage increases for FY26 & FY27 are not included.

<i>(\$millions)</i>	FY25	FY26	FY27
CSUs	185.1	233.8	233.8
CT State	225.3	264.6	264.3
Charter Oak	3.3	5.4	5.4
BOR	.5	.5	.5
Developmental education	10.2	10.2	10.2
Outcome-based funding	1.4	1.4	1.4
O'Neill chair	.3	.3	.3
PACT	28.5	34.2	34.2
Other	-	.7	.7
Temporary support	156.3	-	-
Total Baseline Budget Request	610.9	551.1	550.8



Deficit mitigation

- Planned deficit mitigation is \$95M.
- FY26
 - Expenditure reduction = \$39.7M
 - Reserves = \$55.2M
- FY27
 - Expenditure reduction = \$37.0M
 - Reserves = \$58.1M

<i>(\$millions)</i>	FY26	FY27
Central	7.0	5.8
Eastern	2.1	2.1
Southern	8.6	7.8
Western	11.4	11.2
CT State	60.0	62.9
Charter Oak	1.8	1.3
System Office	4.0	4.0
Deficit mitigation	(94.9)	(95.1)



Projections

- We are asking the State to cover remaining projected deficits after mitigation.
- FY26
 - Request \$23.0M
- FY27
 - Request \$21.6M

<i>(\$millions)</i>	FY26	FY27
Central	-	-
Eastern	(6.4)	(7.3)
Southern	(9.8)	(6.4)
Western	(10.8)	(12.1)
CT State	-	-
Charter Oak	-	-
Project deficit after mitigation	(23.0)	(21.6)

RESOLUTION

Concerning

CONNECTICUT STATE COLLEGES AND
UNIVERSITIES FY2026 TUITION AND FEES

December 19, 2024

- WHEREAS, The Board of Regents for Higher Education (“BOR”), in accordance with Connecticut General Statutes § 10a-6(a)(3), shall establish tuition and fee policies for the Connecticut State Colleges & Universities (“CSCU”) institutions under the jurisdiction of the BOR (“CSCU institutions”); and
- WHEREAS, The BOR, in accordance with Connecticut General Statutes § 10a-99(a), shall fix fees for tuition and shall fix fees for such other purposes as the BOR deems necessary at the CSCU Universities; and
- WHEREAS, The BOR in accordance with Connecticut General Statutes § 10a-77(a), shall fix fees for tuition at CT State Community College (formerly, “Community-Technical Colleges”) and shall fix fees for such other purposes as the BOR deems necessary; and
- WHEREAS, The BOR in accordance with Connecticut General Statutes § 10a-143(e), shall fix fees at Charter Oak State College and shall fix fees for such other purposes as the BOR deems necessary; and
- WHEREAS, On October 24, 2024, the BOR approved the Biennium Operating & Capital Budget Request for FY2026 and FY2027 which did not include tuition or mandatory fee increases; and
- WHEREAS, The BOR desires to keep tuition and fees at current levels, the CSCU institutions have experienced significant financial challenges that require comprehensive financial strategies to ensure the sustainability and continuity of services; and
- WHEREAS, The proposed fee adjustments include only food service fee rates for the Connecticut State Universities, and credit card service fees for CT State Community College, which are necessary to offset increasing costs associated with these services; and
- WHEREAS, The proposed fee increases were developed through comprehensive leadership efforts at each CSCU institution; now, therefore, be it

RESOLVED, That the BOR approves the FY2026 tuition and fee schedules as presented for CSU, CT State and Charter Oak College as set for in the respective schedules A, B and C; and be it further

RESOLVED, That the BOR authorizes the Chancellor to take all necessary actions to implement the FY2026 fees rates and schedules as approved herein. Any such adjustments shall be promptly reported to the BOR Finance and Infrastructure Committee for review.

A True Copy:

Pamela A. Heleen, Secretary
Board of Regents for Higher Education

ACTION ITEM:

FY 2026 Tuition and Fees: State Universities, CT State Community College, and Charter Oak State College

The Board of Regents (BOR) of the Connecticut State College and Universities (CSCU) is recommending holding tuition and mandatory fees flat for FY2025-26 academic year, reaffirming its commitment to keeping the cost of education as affordable as possible. In the biennial budget submission for FY2026/FY2027, CSCU did not project any additional revenue from increased tuition rates or fees.

However, CSCU will face cost increases due to contract terms, inflation, and rising energy costs. There is considerable interest in requesting that the BOR allow its institutions to raise fees only in certain areas where costs are contractually escalating, such as food services and credit card costs. Additionally, the Student Government Association at Eastern Connecticut State University has requested changes to two student fees: the residence hall social fee and the transportation fee which are presented in detail below.

Connecticut State University System

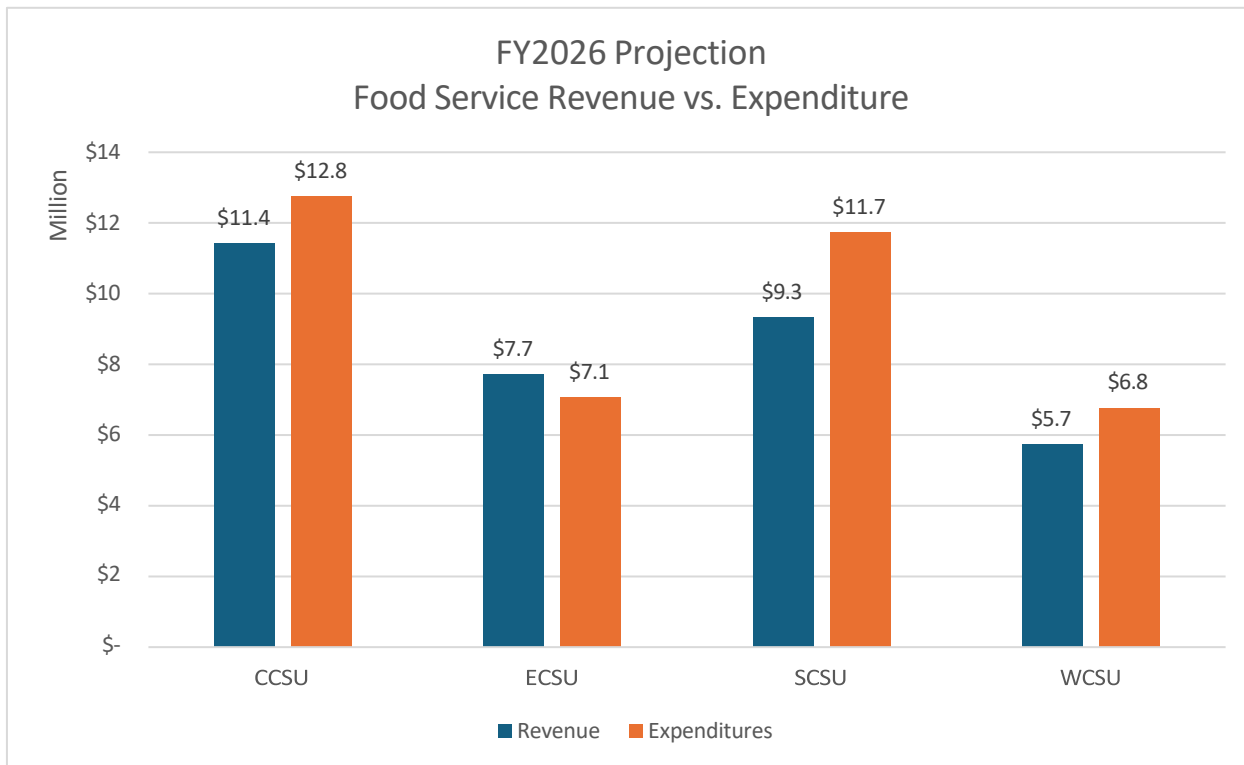
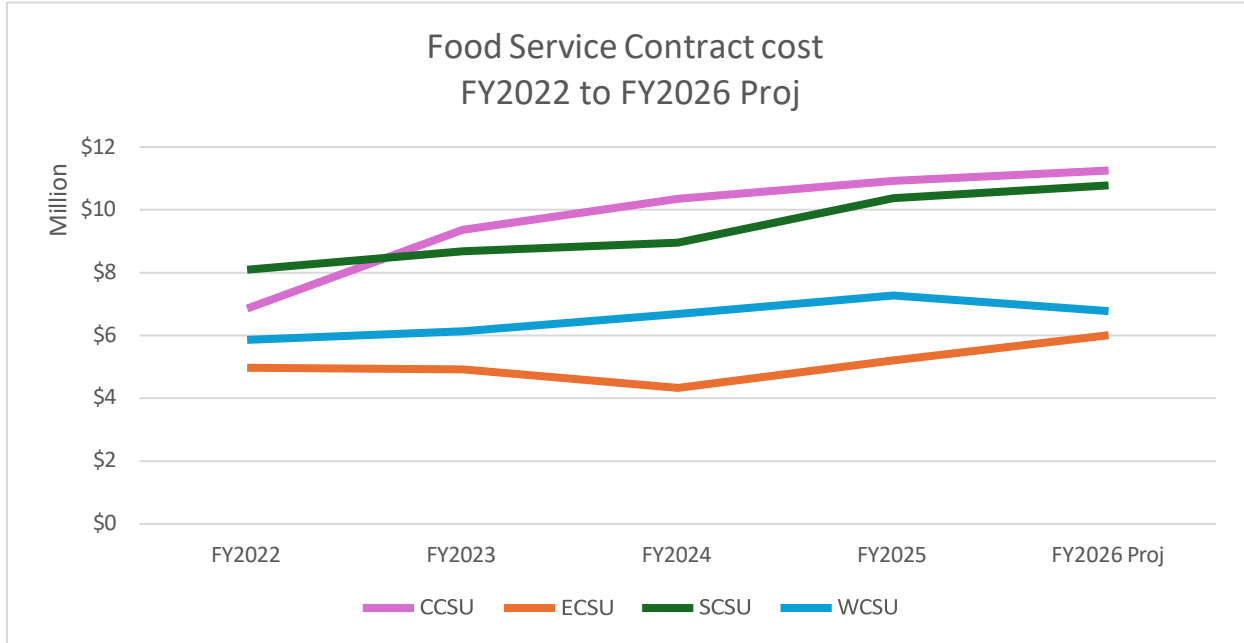
Food Service Fee

The Connecticut State Universities are requesting an adjustment to the food service rates. All Universities offer a variety of meal plans as part of the room and board services provided to all students living on campus. The food service fee increase is campus specific and influenced by the food service contracts that include increases in food costs. The annual food service rates and proposed increases for each university are as follows:

	FY 2025	Proposed FY 2026	FY2026 Proposed vs. FY2025	
			\$	%
Central Connecticut State University	\$ 5,412	\$ 5,602	190	3.5%
Eastern Connecticut State University	\$ 6,866	\$ 7,064	198	2.9%
Southern Connecticut State University	\$ 6,738	\$ 7,000	262	3.9%
Western Connecticut State University	\$ 6,682	\$ 7,056	374	5.6%

The following graphs show that food service costs are increasing for all Universities except Western. Based on the FY2026 projection, the revenue generated from food service operations is insufficient to cover the increasing operating costs at each University except Eastern. With the increase proposed here, the financial impact in FY2026 is projected as follows: CCSU (\$1.4M loss), ECSU (\$600K gain), SCSU (\$2.4M loss), and WCSU shows a loss of \$1.1M.

Food service contracts account for over 88% of the total operational cost on average of providing food service to students. Other operating expenses include personnel cost, equipment, general maintenance, cash registers, dishware, pest control services, emergency generators, and custodial support assigned specifically to food service buildings.



Residence Hall Social Fee - ECSU

The Student Government at ECSU requested to increase the Residence Hall Social Fee from \$20 to \$22 per semester or \$40 to \$44 per academic year. These funds are managed by students and are kept in the Agency Fund group at Eastern Connecticut State University (ECSU) which is a self-sufficient fund. The modest increase provides students with additional resources for self-managed activities and initiatives.

Transportation Fee - ECSU

In FY2018, CSCU partnered with DOT to provide all students with access to Connecticut’s mass transportation systems. Eastern Connecticut State University (ECSU) initially opted out of the program due to limited bus routes in Willimantic. Since then, additional bus routes in the Willimantic area have been added and increased student interest in the UPASS program.

Beginning with Fall 2025, the Student Government Association at ECSU requested to join the UPASS program that offers unlimited rides on public transit systems within the State.

To provide ECSU students with the opportunity to use U PASS, a \$40 transportation fee will be included in all undergraduate student tuition bills each semester.

Changes are highlighted and reflected in Attachment A: “CSU FY26 Tuition and Fees”.

Connecticut State Community College

Tier II Fee, Credit Card Service Fee

Currently, CT State incurs credit card transaction fees as an expense, resulting in \$800,000 in costs per year over the past few years. CT State is proposing a 2.95% fee on credit card transactions.

Expenses for Credit Card Transaction Fees	
FY 21 actual	\$ 837,101
FY 22 actual	\$ 801,462
FY 23 actual	\$ 783,443
FY 24 actual	\$ 799,332
FY 25 estimated	\$800,000-\$850,000

Pursuant to sections 438-441 of Public Act 21-2 (June Special Session), state agencies are required to charge a service fee, starting on July 1, 2022 to customers who make payment of any fee, cost or fine by credit, charge or debit card, unless the Secretary of the Office of Policy and Management (OPM) authorizes a waiver of such service fee, which he authorized from July 1, 2022 to June 30, 2025.

CT State Community College has been operating under this waiver from OPM since July 1, 2022, and has absorbed over \$3M in costs for credit card fees as a result. CT State is working with Touchnet, our credit card service provider, to pass along the 3% service fee as early as practicable, starting Fall 2025.

Pursuant to BR 24-014 any credit card service fees shall appear as an informational item at the bottom of the Tier II fee schedule.

The changes are reflected in Attachment B: "CT State FY26 Tuition and Fees, Tier II Fees".

Charter Oak State College (COSC)

There are no changes at Charter Oak State College as reflected in Attachment C: "Charter Oak FY26 Tuition and Fee".

RECOMMENDATION

We recommend that the Board approve the proposed tuition and fee increases.

Attachment A – CSU FY26 Tuition and Fee

Attachment B – CT State FY26 Tuition and Fee, Tier II Fees

Attachment C – Charter Oak FY26 Tuition and Fee

CONNECTICUT STATE UNIVERSITIES
SYSTEMWIDE AVERAGE
FY2025-26 Tuition and Fee Rates - Academic Year

	SYSTEMWIDE AVERAGE											
	Undergraduate In-State				Undergraduate Out-of-State				Undergraduate NE Regional			
	Actual	Proposed	FY26 vs. FY25		Actual	Proposed	FY26 vs. FY25		Actual	Proposed	FY26 vs. FY25	
	FY 2024-25	FY 2025-26	\$	%	FY 2024-25	FY 2025-26	\$	%	FY 2024-25	FY 2025-26	\$	%
Tuition	6,998	6,998	0	0.0%	20,938	20,938	0	0.0%	10,498	10,498	0	0.0%
University General Fee	5,130	5,130	0	0.0%	5,130	5,130	0	0.0%	5,130	5,130	0	0.0%
University Fee	1,056	1,056	0	0.0%	1,056	1,056	0	0.0%	1,056	1,056	0	0.0%
Student Activity Fee	178	178	0	0.0%	178	178	0	0.0%	178	178	0	0.0%
Media Fee	15	15	0	0.0%	15	15	0	0.0%	15	15	0	0.0%
Subtotal	13,377	13,377	0	0.0%	27,317	27,317	0	0.0%	16,877	16,877	0	0.0%
Transportation Fee (\$40 per semester)	80	80	0	0.0%	80	80	0	0.0%	80	80	0	0.0%
Total - Commuting Student	13,457	13,457	0	0.0%	27,397	27,397	0	0.0%	16,957	16,957	0	0.0%
Housing (Double)	8,448	8,448	0	0.0%	8,448	8,448	0	0.0%	8,448	8,448	0	0.0%
Food Service	6,425	6,681	256	4.0%	6,425	6,681	256	4.0%	6,425	6,681	256	4.0%
Residence Hall Social Fee	45	46	1	2.2%	45	46	1	2.2%	45	46	1	2.2%
Total Tuition and Fees	28,375	28,632	257	0.9%	42,315	42,572	257	0.6%	31,875	32,132	257	0.8%
Tuition Part Time (Per Credit Hour)	292	292	0	0.0%	292	292	0	0.0%	292	292	0	0.0%
General University Fee (Per Credit Hour)	366	366	0	0.0%	370	370	0	0.0%	370	370	0	0.0%
Extension Fee (Per Credit Hour)	658	658	0	0.0%	662	662	0	0.0%	662	662	0	0.0%
Registration Fee (Per Semester)	58	58	0	0.0%	58	58	0	0.0%	58	58	0	0.0%
Transportation Fee (\$40 per semester)	40	40	0	0.0%	40	40	0	0.0%	40	40	0	0.0%
Student Activity Fee	8	8	0	0.0%	8	8	0	0.0%	8	8	0	0.0%
	SYSTEMWIDE AVERAGE											
	Graduate In-State				Graduate Out-of-State				Graduate NE Regional			
	Actual	Proposed	FY26 vs. FY25		Actual	Proposed	FY26 vs. FY25		Actual	Proposed	FY26 vs. FY25	
	FY 2024-25	FY 2025-26	\$	%	FY 2024-25	FY 2025-26	\$	%	FY 2024-25	FY 2025-26	\$	%
Tuition	8,716	8,716	0	0.0%	22,446	22,446	0	0.0%	13,074	13,074	0	0.0%
University General Fee	5,130	5,130	0	0.0%	5,130	5,130	0	0.0%	5,130	5,130	0	0.0%
University Fee	1,056	1,056	0	0.0%	1,056	1,056	0	0.0%	1,056	1,056	0	0.0%
Student Activity Fee	132	132	0	0.0%	132	132	0	0.0%	132	132	0	0.0%
Total Commuting Student	15,034	15,034	0	0.0%	28,764	28,764	0	0.0%	19,392	19,392	0	0.0%
Housing (Double)	8,448	8,448	0	0.0%	8,448	8,448	0	0.0%	8,448	8,448	0	0.0%
Food Service	6,425	6,681	256	4.0%	6,425	6,681	256	4.0%	6,425	6,681	256	4.0%
Residence Hall Social Fee	45	46	1	2.2%	45	46	1	2.2%	45	46	1	2.2%
Total Tuition and Fees	29,952	30,209	257	0.9%	43,682	43,939	257	0.6%	34,310	34,567	257	0.7%
Tuition Part Time (Per Credit Hour)	482	482	0	0.0%	482	482	0	0.0%	482	482	0	0.0%
General University Fee (Per Credit Hour)	309	309	0	0.0%	313	313	0	0.0%	313	313	0	0.0%
Extension Fee (Per Credit Hour)	791	791	0	0.0%	795	795	0	0.0%	795	795	0	0.0%
Registration Fee (Per Semester)	60	60	0	0.0%	60	60	0	0.0%	60	60	0	0.0%
Student Activity Fee	8	8	0	0.0%	8	8	0	0.0%	8	8	0	0.0%

CONNECTICUT STATE UNIVERSITIES

Undergraduate and Graduate Tuition and Fee Increases by Commuting & Resident Student
Dollar & Percent Change FY2025-26

FY 2025-26 Academic Year	CENTRAL				EASTERN				SOUTHERN				WESTERN			
	Undergraduate		Graduate		Undergraduate		Graduate		Undergraduate		Graduate		Undergraduate		Graduate	
In-State Commuting Student	\$0	0.0%	\$0	0.0%	\$80	0.6%	\$0	0.0%	\$0	0.0%	\$0	0.0%	\$0	0.0%	\$0	0.0%
In-State Resident Student	\$190	0.7%	\$190	0.7%	\$282	0.9%	\$202	0.6%	\$262	0.9%	\$262	0.9%	\$374	1.3%	\$374	1.2%
Out-of-State Commuting Student	\$0	0.0%	\$0	0.0%	\$80	0.3%	\$0	0.0%	\$0	0.0%	\$0	0.0%	\$0	0.0%	\$0	0.0%
Out-of-State Resident Student	\$190	0.5%	\$190	0.5%	\$282	0.6%	\$202	0.4%	\$262	0.6%	\$262	0.6%	\$374	0.9%	\$374	0.8%

CONNECTICUT STATE UNIVERSITIES

In-State Undergraduate Cost of Attendance Schedule

FY2024-25 & FY2025-26 Tuition and Fee Rates - Academic Year

	CENTRAL Undergraduate In-State				EASTERN Undergraduate In-State				SYSTEMWIDE AVERAGE Undergraduate In-State			
	Actual	Proposed	FY26 vs. FY25		Actual	Proposed	FY26 vs. FY25		Actual	Proposed	FY26 vs. FY25	
	FY 2024-25	FY 2025-26	\$	%	FY 2024-25	FY 2025-26	\$	%	FY 2024-25	FY 2025-26	\$	%
Tuition	6,998	6,998	0	0.0%	6,998	6,998	0	0.0%	6,998	6,998	0	0.0%
University General Fee	4,716	4,716	0	0.0%	5,674	5,674	0	0.0%	5,130	5,130	0	0.0%
University Fee	1,056	1,056	0	0.0%	1,056	1,056	0	0.0%	1,056	1,056	0	0.0%
Student Activity Fee	172	172	0	0.0%	200	200	0	0.0%	178	178	0	0.0%
Media Fee	28	28	0	0.0%			0	N/A	15	15	0	0.0%
Subtotal	12,970	12,970	0	0.0%	13,928	13,928	0	0.0%	13,377	13,377	0	0.0%
Transportation Fee (\$40 per semester)	80	80	0	0.0%		80	80	N/A	80	80	0	0.0%
Total - Commuting Student	13,050	13,050	0	0.0%	13,928	14,008	80	0.6%	13,457	13,457	0	0.0%
Housing (Double)	7,630	7,630	0	0.0%	9,080	9,080	0	0.0%	8,448	8,448	0	0.0%
Food Service	5,412	5,602	190	3.5%	6,866	7,064	198	2.9%	6,425	6,681	256	4.0%
Residence Hall Social Fee	44	44	0	0.0%	40	44	4	10.0%	45	46	1	2.2%
Total Tuition and Fees	26,136	26,326	190	0.7%	29,914	30,196	282	0.9%	28,375	28,632	257	0.9%
Tuition Part Time (Per Credit Hour)	292	292	0	0.0%	292	292	0	0.0%	292	292	0	0.0%
General University Fee (Per Credit Hour)	350	350	0	0.0%	365	365	0	0.0%	366	366	0	0.0%
Extension Fee (Per Credit Hour)	642	642	0	0.0%	657	657	0	0.0%	658	658	0	0.0%
Registration Fee (Per Semester)	58	58	0	0.0%	60	60	0	0.0%	58	58	0	0.0%
Transportation Fee (Per semester)	40	40	0	0.0%		40	40	N/A	40	40	0	0.0%
Student Activity Fee									8	8	0	0.0%
	SOUTHERN Undergraduate In-State				WESTERN Undergraduate In-State							
	Actual	Proposed	FY26 vs. FY25		Actual	Proposed	FY26 vs. FY25					
	FY 2024-25	FY 2025-26	\$	%	FY 2024-25	FY 2025-26	\$	%				
Tuition	6,998	6,998	0	0.0%	6,998	6,998	0	0.0%				
University General Fee	5,094	5,094	0	0.0%	5,036	5,036	0	0.0%				
University Fee	1,056	1,056	0	0.0%	1,056	1,056	0	0.0%				
Student Activity Fee	140	140	0	0.0%	199	199	0	0.0%				
Media Fee	30	30	0	0.0%			0	N/A				
Subtotal	13,318	13,318	0	0.0%	13,289	13,289	0	0.0%				
Transportation Fee (\$40 per semester)	80	80	0	0.0%	80	80	0	0.0%				
Total - Commuting Student	13,398	13,398	0	0.0%	13,369	13,369	0	0.0%				
Housing (Double)	8,150	8,150	0	0.0%	8,932	8,932	0	0.0%				
Food Service	6,738	7,000	262	3.9%	6,682	7,056	374	5.6%				
Residence Hall Social Fee	50	50	0	0.0%	45	45	0	0.0%				
Total Tuition and Fees	28,336	28,598	262	0.9%	29,028	29,402	374	1.3%				
Tuition Part Time (Per Credit Hour)	292	292	0	0.0%	292	292	0	0.0%				
General University Fee (Per Credit Hour)	403	403	0	0.0%	344	344	0	0.0%				
Extension Fee (Per Credit Hour)	695	695	0	0.0%	636	636	0	0.0%				
Registration Fee (Per Semester)	55	55	0	0.0%	60	60	0	0.0%				
Transportation Fee (Per semester)	40	40	0	0.0%	40	40	0	0.0%				
Student Activity Fee					8	8	0	0.0%				

CONNECTICUT STATE UNIVERSITIES

Out-of-State Undergraduate Cost of Attendance Schedule
 FY2024-25 & FY2025-26 Tuition and Fee Rates - Academic Year

	CENTRAL				EASTERN				SYSTEMWIDE AVERAGE			
	Undergraduate Out-of-State				Undergraduate Out-of-State				Undergraduate Out-of-State			
	Actual	Proposed	FY26 vs. FY25		Actual	Proposed	FY26 vs. FY25		Actual	Proposed	FY26 vs. FY25	
FY 2024-25	FY 2025-26	\$	%	FY 2024-25	FY 2025-26	\$	%	FY 2024-25	FY 2025-26	\$	%	
Tuition	20,938	20,938	0	0.0%	20,938	20,938	0	0.0%	20,938	20,938	0	0.0%
University General Fee	4,716	4,716	0	0.0%	5,674	5,674	0	0.0%	5,130	5,130	0	0.0%
University Fee	1,056	1,056	0	0.0%	1,056	1,056	0	0.0%	1,056	1,056	0	0.0%
Student Activity Fee	172	172	0	0.0%	200	200	0	0.0%	178	178	0	0.0%
Media Fee	28	28	0	0.0%			0	N/A	15	15	0	0.0%
Subtotal	26,910	26,910	0	0.0%	27,868	27,868	0	0.0%	27,317	27,317	0	0.0%
Transportation Fee (\$40 per semester)	80	80	0	0.0%		80	80	N/A	80	80	0	0.0%
Total - Commuting Student	26,990	26,990	0	0.0%	27,868	27,948	80	0.3%	27,397	27,397	0	0.0%
Housing (Double)	7,630	7,630	0	0.0%	9,080	9,080	0	0.0%	8,448	8,448	0	0.0%
Food Service	5,412	5,602	190	3.5%	6,866	7,064	198	2.9%	6,425	6,681	256	4.0%
Residence Hall Social Fee	44	44	0	0.0%	40	44	4	10.0%	45	46	1	2.2%
Total Tuition and Fees	40,076	40,266	190	0.5%	43,854	44,136	282	0.6%	42,315	42,572	257	0.6%
Tuition Part Time (Per Credit Hour)	292	292	0	0.0%	292	292	0	0.0%	292	292	0	0.0%
General University Fee (Per Credit Hour)	367	367	0	0.0%	365	365	0	0.0%	370	370	0	0.0%
Extension Fee (Per Credit Hour)	659	659	0	0.0%	657	657	0	0.0%	662	662	0	0.0%
Registration Fee (Per Semester)	58	58	0	0.0%	60	60	0	0.0%	58	58	0	0.0%
Transportation Fee (Per semester)	40	40	0	0.0%		40	40	N/A	40	40	0	0.0%
Student Activity Fee									8	8		

	SOUTHERN				WESTERN			
	Undergraduate Out-of-State				Undergraduate Out-of-State			
	Actual	Proposed	FY26 vs. FY25		Actual	Proposed	FY26 vs. FY25	
FY 2024-25	FY 2025-26	\$	%	FY 2024-25	FY 2025-26	\$	%	
Tuition (1)	20,938	20,938	0	0.0%	20,938	20,938	0	0.0%
University General Fee	5,094	5,094	0	0.0%	5,036	5,036	0	0.0%
University Fee (1)	1,056	1,056	0	0.0%	1,056	1,056	0	0.0%
Student Activity Fee	140	140	0	0.0%	199	199	0	0.0%
Media Fee	30	30	0	0.0%			0	N/A
Subtotal	27,258	27,258	0	0.0%	27,229	27,229	0	0.0%
Transportation Fee (\$40 per semester)	80	80	0	0.0%	80	80	0	0.0%
Total - Commuting Student	27,338	27,338	0	0.0%	27,309	27,309	0	0.0%
Housing (Double)	8,150	8,150	0	0.0%	8,932	8,932	0	0.0%
Food Service	6,738	7,000	262	3.9%	6,682	7,056	374	5.6%
Residence Hall Social Fee	50	50	0	0.0%	45	45	0	0.0%
Total Tuition and Fees	42,276	42,538	262	0.6%	42,968	43,342	374	0.9%
Tuition Part Time (Per Credit Hour) (1)	292	292	0	0.0%	292	292	0	0.0%
General University Fee (Per Credit Hour)	403	403	0	0.0%	344	344	0	0.0%
Extension Fee (Per Credit Hour)	695	695	0	0.0%	636	636	0	0.0%
Registration Fee (Per Semester)	55	55	0	0.0%	60	60	0	0.0%
Transportation Fee (Per semester)	40	40	0	0.0%	40	40	0	0.0%
Student Activity Fee					8	8	0	0.0%

Notes:

BOR Resolution BR-23-065 authorizes CSCU institutions to offer the Discounted Tuition Rate equivalent to the current NEBHE regional tuition rate to students from all locations outside of the State of Connecticut.

CONNECTICUT STATE UNIVERSITIES
NE Regional Undergraduate Cost of Attendance Schedule
FY2024-25 & FY2025-26 Tuition and Fee Rates - Academic Year

	CENTRAL Undergraduate NE Regional				EASTERN Undergraduate NE Regional				SYSTEMWIDE AVERAGE Undergraduate NE Regional			
	Actual	Proposed	FY26 vs. FY25		Actual	Proposed	FY26 vs. FY25		Actual	Proposed	FY26 vs. FY25	
	FY 2024-25	FY 2025-26	\$	%	FY 2024-25	FY 2025-26	\$	%	FY 2024-25	FY 2025-26	\$	%
Tuition	10,498	10,498	0	0.0%	10,498	10,498	0	0.0%	10,498	10,498	0	0.0%
University General Fee	4,716	4,716	0	0.0%	5,674	5,674	0	0.0%	5,130	5,130	0	0.0%
University Fee	1,056	1,056	0	0.0%	1,056	1,056	0	0.0%	1,056	1,056	0	0.0%
Student Activity Fee	172	172	0	0.0%	200	200	0	0.0%	178	178	0	0.0%
Media Fee	28	28	0	0.0%					15	15	0	0.0%
Subtotal	16,470	16,470	0	0.0%	17,428	17,428	0	0.0%	16,877	16,877	0	0.0%
Transportation Fee (\$40 per semester)	80	80	0	0.0%		80			80	80	0	0.0%
Total - Commuting Student	16,550	16,550	0	0.0%	17,428	17,508	80	0.5%	16,957	16,957	0	0.0%
Housing (Double)	7,630	7,630	0	0.0%	9,080	9,080	0	0.0%	8,448	8,448	0	0.0%
Food Service	5,412	5,602	190	3.5%	6,866	7,064	198	2.9%	6,425	6,681	256	4.0%
Residence Hall Social Fee	44	44	0	0.0%	40	44	4	10.0%	45	46	1	2.2%
Total Tuition and Fees	29,636	29,826	190	0.6%	33,414	33,696	282	0.8%	31,875	32,132	257	0.8%
Tuition Part Time (Per Credit Hour)	292	292	0	0.0%	292	292	0	0.0%	292	292	0	0.0%
General University Fee (Per Credit Hour)	367	367	0	0.0%	365	365	0	0.0%	370	370	0	0.0%
Extension Fee (Per Credit Hour)	659	659	0	0.0%	657	657	0	0.0%	662	662	0	0.0%
Registration Fee (Per Semester)	58	58	0	0.0%	60	60	0	0.0%	58	58	0	0.0%
Transportation Fee (Per semester)	40	40	0	0.0%		40	40	N/A	40	40	0	0.0%
Student Activity Fee									8	8		

	SOUTHERN Undergraduate NE Regional				WESTERN Undergraduate NE Regional			
	Actual	Proposed	FY26 vs. FY25		Actual	Proposed	FY26 vs. FY25	
	FY 2024-25	FY 2025-26	\$	%	FY 2024-25	FY 2025-26	\$	%
Tuition	10,498	10,498	0	0.0%	10,498	10,498	0	0.0%
University General Fee	5,094	5,094	0	0.0%	5,036	5,036	0	0.0%
University Fee	1,056	1,056	0	0.0%	1,056	1,056	0	0.0%
Student Activity Fee	140	140	0	0.0%	199	199	0	0.0%
Media Fee	30	30	0	0.0%			0	N/A
Subtotal	16,818	16,818	0	0.0%	16,789	16,789	0	0.0%
Transportation Fee (\$40 per semester)	80	80	0	0.0%	80	80	0	0.0%
Total - Commuting Student	16,898	16,898	0	0.0%	16,869	16,869	0	0.0%
Housing (Double)	8,150	8,150	0	0.0%	8,932	8,932	0	0.0%
Food Service	6,738	7,000	262	3.9%	6,682	7,056	374	5.6%
Residence Hall Social Fee	50	50	0	0.0%	45	45	0	0.0%
Total Tuition and Fees	31,836	32,098	262	0.8%	32,528	32,902	374	1.1%
Tuition Part Time (Per Credit Hour) (1)	292	292	0	0.0%	292	292	0	0.0%
General University Fee (Per Credit Hour)	403	403	0	0.0%	344	344	0	0.0%
Extension Fee (Per Credit Hour)	695	695	0	0.0%	636	636	0	0.0%
Registration Fee (Per Semester)	55	55	0	0.0%	60	60	0	0.0%
Transportation Fee (Per semester)	40	40	0	0.0%	40	40	0	0.0%
Student Activity Fee					8	8	0	0.0%

Notes:

BOR Resolution BR-23-065 authorizes CSCU institutions to offer the Discounted Tuition Rate equivalent to the current NEBHE regional tuition rate to students from all locations outside of the State of Connecticut.

CONNECTICUT STATE UNIVERSITIES

In-State Graduate Cost of Attendance Schedule

FY2024-25 & FY2025-26 Tuition and Fee Rates - Academic Year

	CENTRAL				EASTERN				SYSTEMWIDE AVERAGE			
	Graduate In-State		FY25 vs. FY24		Graduate In-State		FY25 vs. FY24		Graduate In-State		FY25 vs. FY24	
	Actual	Proposed			Actual	Proposed			Actual	Proposed		
	FY 2024-25	FY 2025-26	\$	%	FY 2024-25	FY 2025-26	\$	%	FY 2024-25	FY 2025-26	\$	%
Tuition	8,716	8,716	0	0.0%	8,716	8,716	0	0.0%	8,716	8,716	0	0.0%
University General Fee	4,716	4,716	0	0.0%	5,674	5,674	0	0.0%	5,130	5,130	0	0.0%
University Fee	1,056	1,056	0	0.0%	1,056	1,056	0	0.0%	1,056	1,056	0	0.0%
Student Activity Fee	74	74	0	0.0%	200	200	0	0.0%	132	132	0	0.0%
Total - Commuting Student	14,562	14,562	0	0.0%	15,646	15,646	0	0.0%	15,034	15,034	0	0.0%
Housing (Double)	7,630	7,630	0	0.0%	9,080	9,080	0	0.0%	8,448	8,448	0	0.0%
Food Service	5,412	5,602	190	3.5%	6,866	7,064	198	2.9%	6,425	6,681	256	4.0%
Residence Hall Social Fee	44	44	0	0.0%	40	44	4	10.0%	45	46	1	2.2%
Total Tuition and Fees	27,648	27,838	190	0.7%	31,632	31,834	202	0.6%	29,952	30,209	257	0.9%
Part Time Tuition (Per Credit Hour)	481	481	0	0.0%	481	481	0	0.0%	482	482	0	0.0%
General University Fee (Per Credit Hour)	328	328	0	0.0%	269	269	0	0.0%	309	309	0	0.0%
Extension Fee (Per Credit Hour)	809	809	0	0.0%	750	750	0	0.0%	791	791	0	0.0%
Registration Fee (Per Semester)	65	65	0	0.0%	60	60	0	0.0%	60	60	0	0.0%
Student Activity Fee									8	8	0	0.0%
Ed.D Leadership Tuition (Per Credit Hour)									751	751	0	0.0%
Ed.D Leadership General University Fee (Per Credit Hour)									365	365	0	0.0%
Doctoral Program Fee PT Tuition (Per Credit Hour)	753	753	0	0.0%					878	878	0	0.0%
Doctoral Program General University Fee	356	356	0	0.0%					412	412	0	0.0%
Doctoral Program Extension Fee (Per Credit Hour)	1,109	1,109	0	0.0%					1,109	1,109	0	0.0%
Ed. D. Nursing Part Time (Per Credit Hour)									1,002	1,002	0	0.0%
Ed. D.Nursing General University Fee (Per Credit Hour)									468	468	0	0.0%
MBA Part Time Tuition (Per Credit Hour)									593	593	0	0.0%
MBA General University Fee (Per Credit Hour)									401	401	0	0.0%
MLS Part Time Tuition (Per Credit Hour)									593	593	0	0.0%
MLS General University Fee									401	401	0	0.0%
MFA - Writing Part Time Tuition (Per Credit Hour)									562	562	0	0.0%
MFA - General University Fee									244	244	0	0.0%
MS Education Program (Full-time Commuting)									15,007	15,007	0	0.0%
MS Music Education Program (Full-time Commuting)									15,007	15,007	0	0.0%
MS Counseling Education Program (Full-time Commuting)									15,007	15,007	0	0.0%
MAT Secondary Education Program (Full-time Commuting)									15,007	15,007	0	0.0%
MBA Program (Full-time)									16,626	16,626	0	0.0%
Accelerated MBA Program (Full-time Online/Hybrid)									16,626	16,626	0	0.0%
On Line Full Time MBA/MLS/Sports and Ent. Mgt.									16,626	16,626	0	0.0%
MFA Art Program (Full-time)									11,072	11,072	0	0.0%
MFA Writing Program (Full-time)									9,146	9,146	0	0.0%
	SOUTHERN				WESTERN							
	Graduate In-State		FY25 vs. FY24		Graduate In-State		FY25 vs. FY24					
	Actual	Proposed			Actual	Proposed						
	FY 2024-25	FY 2025-26	\$	%	FY 2024-25	FY 2025-26	\$	%				
Tuition	8,716	8,716	0	0.0%	8,716	8,716	0	0.0%				
University General Fee	5,094	5,094	0	0.0%	5,036	5,036	0	0.0%				
University Fee	1,056	1,056	0	0.0%	1,056	1,056	0	0.0%				
Student Activity Fee	54	54	0	0.0%	199	199	0	0.0%				
Total - Commuting Student	14,920	14,920	0	0.0%	15,007	15,007	0	0.0%				
Housing (Double)	8,150	8,150	0	0.0%	8,932	8,932	0	0.0%				
Food Service	6,738	7,000	262	3.9%	6,682	7,056	374	5.6%				
Residence Hall Social Fee	50	50	0	0.0%	45	45	0	0.0%				
Total Tuition and Fees	29,858	30,120	262	0.9%	30,666	31,040	374	1.2%				
Part Time Tuition (Per Credit Hour)	484	484	0	0.0%	480	480	0	0.0%				
General University Fee (Per Credit Hour)	396	396	0	0.0%	244	244	0	0.0%				
Extension Fee (Per Credit Hour)	880	880	0	0.0%	724	724	0	0.0%				
Registration Fee (Per Semester)	55	55	0	0.0%	60	60	0	0.0%				
Student Activity Fee					8	8	0	0.0%				
Ed.D Leadership Part Time Tuition (Per Credit Hour)	753	753	0	0.0%	748	748	0	0.0%				
Ed.D Leadership General University Fee (Per Credit Hour)	392	392	0	0.0%	338	338	0	0.0%				
Doctoral Program Part Time (Per Credit Hour)	1,002	1,002	0	0.0%								
Doctoral Program General University Fee (Per Credit Hour)	468	468	0	0.0%								
Ed.D. Nursing Part Time (Per Credit Hour)					1,002	1,002	0	0.0%				
Ed.D. Nursing General University Fee (Per Credit Hour)					468	468	0	0.0%				
MBA Part Time Tuition (Per Credit Hour)	593	593	0	0.0%								
MBA General University Fee (Per Credit Hour)	401	401	0	0.0%								
MLS Part Time Tuition (Per Credit Hour)	593	593	0	0.0%								
MLS General University Fee (Per Credit Hour)	401	401	0	0.0%								
MFA - Writing Part Time Tuition (Per Credit Hour)					562	562	0	0.0%				
MFA - General University Fee					244	244	0	0.0%				
MS Education Program (Full-time Commuting)					15,007	15,007	0	0.0%				
MS Music Education Program (Full-time Commuting)					15,007	15,007	0	0.0%				
MS Counseling Education Program (Full-time Commuting)					15,007	15,007	0	0.0%				
MAT Secondary Education Program (Full-time Commuting)					15,007	15,007	0	0.0%				
MBA Program (Full-time) On Ground Only	16,626	16,626	0	0.0%								
Accelerated MBA Program (Full-time Online/Hybrid)	16,626	16,626	0	0.0%								
On Line Full Time MBA/MLS/Sports and Ent. Mgt.	16,626	16,626	0	0.0%								
MFA Art Program Tuition (Full-time)					11,072	11,072	0	0.0%				
MFA Writing Program Tuition (Full-time)					9,146	9,146	0	0.0%				

CONNECTICUT STATE UNIVERSITIES

Out-of-State Graduate Cost of Attendance Schedule

FY2024-25 & FY2025-26 Tuition and Fee Rates - Academic Year

	CENTRAL				EASTERN				SYSTEMWIDE AVERAGE			
	Graduate Out-of-State				Graduate Out-of-State				Graduate Out-of-State			
	Actual	Proposed	FY26 vs. FY25		Actual	Proposed	FY26 vs. FY25		Actual	Proposed	FY26 vs. FY25	
	FY 2024-25	FY 2025-26	\$	%	FY 2024-25	FY 2025-26	\$	%	FY 2024-25	FY 2025-26	\$	%
Tuition	22,446	22,446	0	0.0%	22,446	22,446	0	0.0%	22,446	22,446	0	0.0%
University General Fee	4,716	4,716	0	0.0%	5,674	5,674	0	0.0%	5,130	5,130	0	0.0%
University Fee	1,056	1,056	0	0.0%	1,056	1,056	0	0.0%	1,056	1,056	0	0.0%
Student Activity Fee	74	74	0	0.0%	200	200	0	0.0%	132	132	0	0.0%
Total - Commuting Student	28,292	28,292	0	0.0%	29,376	29,376	0	0.0%	28,764	28,764	0	0.0%
Housing (Double)	7,630	7,630	0	0.0%	9,080	9,080	0	0.0%	8,448	8,448	0	0.0%
Food Service	5,412	5,602	190	3.5%	6,866	7,064	198	2.9%	6,425	6,681	256	4.0%
Residence Hall Social Fee	44	44	0	0.0%	40	44	4	10.0%	45	46	1	2.2%
Total Tuition and Fees	41,378	41,568	190	0.5%	45,362	45,564	202	0.4%	43,682	43,939	257	0.6%
Part Time Tuition (Per Credit Hour)	481	481	0	0.0%	481	481	0	0.0%	482	482	0	0.0%
General University Fee (Per Credit Hour)	344	344	0	0.0%	269	269	0	0.0%	313	313	0	0.0%
Extension Fee (Per Credit Hour)	825	825	0	0.0%	750	750	0	0.0%	795	795	0	0.0%
Registration Fee (Per Semester)	65	65	0	0.0%	60	60	0	0.0%	60	60	0	0.0%
Student Activity Fee			0	N/A					8	8	0	0.0%
Ed.D Leadership Tuition (Per Credit Hour)									751	751	0	0.0%
Ed.D Leadership General University Fee (Per Credit Hour)									365	365	0	0.0%
Doctoral Program Fee Tuition (Per Credit Hour)	753	753	0	0.0%					878	878	0	0.0%
Doctoral Program General University Fee	356	356	0	0.0%					412	412	0	0.0%
Doctoral Program Extension Fee (Per Credit Hour)	1,109	1,109	0	0.0%					1,109	1,109	0	0.0%
Ed. D. Nursing Part Time (Per Credit Hour)									1,002	1,002	0	0.0%
Ed. D.Nursing General University Fee (Per Credit Hour)									468	468	0	0.0%
MBA Part Time Tuition (Per Credit Hour)									593	593	0	0.0%
MBA General University Fee									401	401	0	0.0%
MLS Part Time Tuition (Per Credit Hour)									593	593	0	0.0%
MLS General University Fee									401	401	0	0.0%
MFA - Writing Part Time Tuition (Per Credit Hour)									562	562	0	0.0%
MFA - General University Fee									244	244	0	0.0%
MS Education Program (Full-time Commuting)									15,007	15,007	0	0.0%
MS Music Education Program (Full-time Commuting)									15,007	15,007	0	0.0%
MS Counseling Education Program (Full-time Commuting)									15,007	15,007	0	0.0%
MAT Secondary Education Program (Full-time Commuting)									15,007	15,007	0	0.0%
MBA Program (Full-time)									30,175	30,175	0	0.0%
Accelerated MBA Program (Full-time Online/Hybrid)									30,175	30,175	0	0.0%
On Line Full Time MBA/MLS/Sports and Ent. Mgt.									16,626	16,626	0	0.0%
MFA Art Program (Full-time)									26,698	26,698	0	0.0%
MFA Writing Program (Full-time)									23,552	23,552	0	0.0%

	SOUTHERN				WESTERN			
	Graduate Out-of-State				Graduate Out-of-State			
	Actual	Proposed	FY26 vs. FY25		Actual	Proposed	FY26 vs. FY25	
	FY 2024-25	FY 2025-26	\$	%	FY 2024-25	FY 2025-26	\$	%
Tuition	22,446	22,446	0	0.0%	22,446	22,446	0	0.0%
University General Fee	5,094	5,094	0	0.0%	5,036	5,036	0	0.0%
University Fee	1,056	1,056	0	0.0%	1,056	1,056	0	0.0%
Student Activity Fee	54	54	0	0.0%	199	199	0	0.0%
Total - Commuting Student	28,650	28,650	0	0.0%	28,737	28,737	0	0.0%
Housing (Double)	8,150	8,150	0	0.0%	8,932	8,932	0	0.0%
Food Service	6,738	7,000	262	3.9%	6,682	7,056	374	5.6%
Residence Hall Social Fee	50	50	0	0.0%	45	45	0	0.0%
Total Tuition and Fees	43,588	43,850	262	0.6%	44,396	44,770	374	0.8%
Part Time Tuition (Per Credit Hour)	484	484	0	0.0%	480	480	0	0.0%
General University Fee (Per Credit Hour)	396	396	0	0.0%	244	244	0	0.0%
Extension Fee (Per Credit Hour)	880	880	0	0.0%	724	724	0	0.0%
Registration Fee (Per Semester)	55	55	0	0.0%	60	60	0	0.0%
Student Activity Fee					8	8	0	0.0%
Ed.D Leadership Part Time Tuition (Per Credit Hour)	753	753	0	0.0%	748	748	0	0.0%
Ed.D Leadership General University Fee (Per Credit Hour)	392	392	0	0.0%	338	338	0	0.0%
Doctoral Program Part Time (Per Credit Hour)	1,002	1,002	0	0.0%				
Doctoral Program General University Fee (Per Credit Hour)	468	468	0	0.0%				
Ed. D. Nursing Part Time (Per Credit Hour)					1,002	1,002	0	0.0%
Ed. D.Nursing General University Fee (Per Credit Hour)					468	468	0	0.0%
MBA Part Time Tuition (Per Credit Hour)	593	593	0	0.0%				
MBA General University Fee	401	401	0	0.0%				
MLS Part Time Tuition (Per Credit Hour)	593	593	0	0.0%				
MLS General University Fee	401	401	0	0.0%				
MFA - Writing Part Time Tuition (Per Credit Hour)					562	562	0	0.0%
MFA - General University Fee					244	244	0	0.0%
MS Education Program (Full-time Commuting)					15,007	15,007	0	0.0%
MS Music Education Program (Full-time Commuting)					15,007	15,007	0	0.0%
MS Counseling Education Program (Full-time Commuting)					15,007	15,007	0	0.0%
MAT Secondary Education Program (Full-time Commuting)					15,007	15,007	0	0.0%
MBA Program (Full-time) On Ground Only	30,175	30,175	0	0.0%				
Accelerated MBA Program (Full-time Online/Hybrid)	30,175	30,175	0	0.0%				
On Line Full Time MBA/MLS/Sports and Ent. Mgt.	16,626	16,626	0	0.0%				
MFA Art Program Tuition (Full-time)					26,698	26,698	0	0.0%
MFA Writing Program Tuition (Full-time)					23,552	23,552	0	0.0%

CONNECTICUT STATE UNIVERSITIES

NE Regional Graduate Cost of Attendance Schedule

FY2024-25 & FY2025-26 Tuition and Fee Rates - Academic Year

	CENTRAL Graduate NE Regional				EASTERN Graduate NE Regional				SYSTEMWIDE AVERAGE Graduate NE Regional			
	Actual		Proposed		Actual		Proposed		Actual		Proposed	
	FY 2024-25		FY 2025-26		FY 2024-25		FY 2025-26		FY 2024-25		FY 2025-26	
			\$	%			\$	%			\$	%
Tuition	13,074	13,074	0	0.0%	13,074	13,074	0	0.0%	13,074	13,074	0	0.0%
University General Fee	4,716	4,716	0	0.0%	5,674	5,674	0	0.0%	5,130	5,130	0	0.0%
University Fee	1,056	1,056	0	0.0%	1,056	1,056	0	0.0%	1,056	1,056	0	0.0%
Student Activity Fee	74	74	0	0.0%	200	200	0	0.0%	132	132	0	0.0%
Total - Commuting Student	18,920	18,920	0	0.0%	20,004	20,004	0	0.0%	19,392	19,392	0	0.0%
Housing (Double)	7,630	7,630	0	0.0%	9,080	9,080	0	0.0%	8,448	8,448	0	0.0%
Food Service	5,412	5,602	190	3.5%	6,866	7,064	198	2.9%	6,425	6,681	256	4.0%
Residence Hall Social Fee	44	44	0	0.0%	40	44	4	10.0%	45	46	1	2.2%
Total Tuition and Fees	32,006	32,196	190	0.6%	35,990	36,192	202	0.6%	34,310	34,567	257	0.7%
Part Time Tuition (Per Credit Hour)	481	481	0	0.0%	481	481	0	0.0%	482	482	0	0.0%
General University Fee (Per Credit Hour)	344	344	0	0.0%	269	269	0	0.0%	313	313	0	0.0%
Extension Fee (Per Credit Hour)	825	825	0	0.0%	750	750	0	0.0%	795	795	0	0.0%
Registration Fee (Per Semester)	65	65	0	0.0%	60	60	0	0.0%	60	60	0	0.0%
Student Activity Fee				N/A					8	8	0	0.0%
Ed.D Leadership Tuition (Per Credit Hour)									751	751	0	0.0%
Ed.D Leadership General University Fee (Per Credit Hour)									365	365	0	0.0%
Doctoral Program Fee Tuition (Per Credit Hour)	753	753	0	0.0%					878	878	0	0.0%
Doctoral Program General University Fee	356	356	0	0.0%					412	412	0	0.0%
Doctoral Program Extension Fee (Per Credit Hour)	1,109	1,109	0	0.0%					1,109	1,109	0	0.0%
Ed. D. Nursing Part Time (Per Credit Hour)									1,002	1,002	0	0.0%
Ed. D.Nursing General University Fee (Per Credit Hour)									468	468	0	0.0%
MBA Part Time Tuition (Per Credit Hour)									593	593	0	0.0%
MBA General University Fee									401	401	0	0.0%
MLS Part Time Tuition (Per Credit Hour)									593	593	0	0.0%
MLS General University Fee									401	401	0	0.0%
MFA - Writing Part Time Tuition (Per Credit Hour)									562	562	0	0.0%
MFA - General University Fee									244	244	0	0.0%
MS Education Program (Full-time Commuting)									15,007	15,007	0	0.0%
MS Music Education Program (Full-time Commuting)									15,007	15,007	0	0.0%
MS Counseling Education Program (Full-time Commuting)									15,007	15,007	0	0.0%
MAT Secondary Education Program (Full-time Commuting)									15,007	15,007	0	0.0%
MBA Program (Full-time)									24,942	24,942	0	0.0%
Accelerated MBA Program (Full-time Online/Hybrid)									24,942	24,942	0	0.0%
On Line Full Time MBA/MLS/Sports and Ent. Mgt.									16,626	16,626	0	0.0%
MFA Art Program (Full-time)									16,608	16,608	0	0.0%
MFA Writing Program (Full-time)									13,718	13,718	0	0.0%
	SOUTHERN Graduate NE Regional				WESTERN Graduate NE Regional							
	Actual		Proposed		Actual		Proposed					
	FY 2024-25		FY 2025-26		FY 2024-25		FY 2025-26					
			\$	%			\$	%				
Tuition	13,074	13,074	0	0.0%	13,074	13,074	0	0.0%				
University General Fee	5,094	5,094	0	0.0%	5,036	5,036	0	0.0%				
University Fee	1,056	1,056	0	0.0%	1,056	1,056	0	0.0%				
Student Activity Fee	54	54	0	0.0%	199	199	0	0.0%				
Total - Commuting Student	19,278	19,278	0	0.0%	19,365	19,365	0	0.0%				
Housing (Double)	8,150	8,150	0	0.0%	8,932	8,932	0	0.0%				
Food Service	6,738	7,000	262	3.9%	6,682	7,056	374	5.6%				
Residence Hall Social Fee	50	50	0	0.0%	45	45	0	0.0%				
Total Tuition and Fees	34,216	34,478	262	0.8%	35,024	35,398	374	1.1%				
Part Time Tuition (Per Credit Hour)	484	484	0	0.0%	480	480	0	0.0%				
General University Fee (Per Credit Hour)	396	396	0	0.0%	244	244	0	0.0%				
Extension Fee (Per Credit Hour)	880	880	0	0.0%	724	724	0	0.0%				
Registration Fee (Per Semester)	55	55	0	0.0%	60	60	0	0.0%				
Student Activity Fee					8	8	0	0.0%				
Ed.D Leadership Part Time Tuition (Per Credit Hour)	753	753	0	0.0%	748	748	0	0.0%				
Ed.D Leadership General University Fee (Per Credit Hour)	392	392	0	0.0%	338	338	0	0.0%				
Doctoral Program Part Time (Per Credit Hour)	1,002	1,002	0	0.0%								
Doctoral Program General University Fee (Per Credit Hour)	468	468	0	0.0%								
Ed. D. Nursing Part Time (Per Credit Hour)					1,002	1,002	0	0.0%				
Ed. D.Nursing General University Fee (Per Credit Hour)					468	468	0	0.0%				
MBA Part Time Tuition (Per Credit Hour)	593	593	0	0.0%								
MBA General University Fee (Per Credit Hour)	401	401	0	0.0%								
MLS Part Time Tuition (Per Credit Hour)	593	593	0	0.0%								
MLS General University Fee (Per Credit Hour)	401	401	0	0.0%								
MFA - Writing Part Time Tuition (Per Credit Hour)					562	562	0	0.0%				
MFA - General University Fee					244	244	0	0.0%				
MS Education Program (Full-time Commuting)					15,007	15,007	0	0.0%				
MS Music Education Program (Full-time Commuting)					15,007	15,007	0	0.0%				
MS Counseling Education Program (Full-time Commuting)					15,007	15,007	0	0.0%				
MAT Secondary Education Program (Full-time Commuting)					15,007	15,007	0	0.0%				
MBA Program (Full-time) On Ground Only	24,942	24,942	0	0.0%								
Accelerated MBA Program (Full-time Online/Hybrid)	24,942	24,942	0	0.0%								
On Line Full Time MBA/MLS/Sports and Ent. Mgt.	16,626	16,626	0	0.0%								
MFA Art Program Tuition (Full-time)					16,608	16,608	0	0.0%				
MFA Writing Program Tuition (Full-time)					13,718	13,718	0	0.0%				

CONNECTICUT STATE UNIVERSITIES

TIER II FEES SCHEDULE FY2024-25 Rates FY2025-26 Rates

FEE DESCRIPTION	CENTRAL		EASTERN		SOUTHERN		WESTERN	
	Fiscal Year		Fiscal Year		Fiscal Year		Fiscal Year	
	2024-25	2025-26	2024-25	2025-26	2024-25	2025-26	2024-25	2025-26
Application Fee (one time)	\$50	\$50	\$50	\$50	\$50	\$50	\$50	\$50
ED.D Evaluation Fee					\$100	\$100	\$0	\$0
Bad Check Penalty (per occurrence)	20	20	20	20	20	20	20	20
Late Fee (per occurrence)	50	50	50	50	50	50	50	50
(1) Transcript Fee (per occurrence)			-	-	0/15	0/15	0	0
Full-time Students (one-time)			40	40	-	-	30	30
Part-time Students (one-time)			12	12	-	-	30	30
Duplicate Diploma Fee (per occurrence)	25	25	25	25	25	25	25	25
Lost ID Card Fee-Resident	10/25	10/25	10	10	10/20	10/20	15	15
Lost ID Card Fee-Non Resident	10/25	10/25	10	10	10/20	10/20	15	15
Nautilus/Fitness Center User Fee (per semester)								
On-campus residents	-	-	-	-	45	45	-	-
Off-campus residents	-	-	-	-	45	45	-	-
Cooperative Education Fee (per semester)	200	200	-	-	-	-	-	-
Installment Payment Program (per Semester)	35	35	35	35	45	45	45	45 *
(8) Past Due Payment Plan Enrollment Fee (for inactive st	-	-	-	-	50	50	50	50
Re-registration Fee	100	100	100	100	100	100	100	100
(5) Orientation Fee (Orientation Program Fee)	200	200	150	150	150	150	200	200
(3) Credit Card Service Fee/Convenience Fee (per transact	2.95%	2.95%	2.95%	2.95%	2.95%	2.95%	2.95%	2.95%
(4) Over-Registration / Excess Credit Fee								
Undergraduate (per credit hour)	642	642	657	657	695	695	636	636
Graduate (per credit hour)	809	809	750	750	880	880	725	725
Study Abroad Program Fee (per semester)								
Undergraduate	150	150	150	150	150	150	150	150
Graduate	150	150	150	150	150	150	150	150
Nat'l Student Exchange Application Fee	-	-	150	150	-	-	-	-
Study Abroad Application Fee (per semester)								
Undergraduate	75	75	75	75	75	75	75	75
Graduate	75	75	75	75	75	75	75	75
Study Abroad Placement Fee (per semester)								
Undergraduate	75	75	-	-	-	-	-	-
Graduate	75	75	-	-	-	-	-	-
Graduate Continuing Enrollment Fee								
Graduate Resident (per semester)	40	40	-	-	150	150	40	40
Graduate Nonresident (per semester)	40	40	-	-	150	150	40	40
Part-time Matriculating (per semester)	40	40	-	-	150	150	40	40
Graduate Re-entry Fee:								
Graduate Resident (per occurrence)	50	50	-	-	-	-	-	-
Graduate Nonresident (per occurrence)	50	50	-	-	-	-	-	-
Part-time (per occurrence)	50	50	-	-	-	-	-	-
(7) Undergraduate Nursing Lab Fee								
Full Time (per semester)	325	325	450	450	500	500	500	500
Part Time (per credit)	27	27	50	50	50	50	40	40
Graduate Nursing Lab Fee								
Full Time (per semester)	-	-	-	-	500	500	500	500
Part Time (per credit)	-	-	-	-	50	50	40	40
Marriage & Family Therapy Program Fee								
Full Time (per semester)	-	-	-	-	150	150	-	-
Part Time (per credit)	-	-	-	-	15	15	-	-
(8) Writing Center Fee								
Full Time (per semester)	-	-	-	-	20	20	16	16
Part Time (per semester)	-	-	-	-	10	10	16	16
(8) Composition 1 Course Fee								
Full Time (per course)							50	50
Part Time (per course)							50	50
(8) BBA Business Program Fee (per semester)								
Full Time (per semester)							60	60
Part Time (per credit)							2	2
(8) Graduate Business Program Fee (per semester)								
Full Time (per semester)	125	125	-	-	-	-	120	120
Part Time (per credit)							4	4
(8) NUR 475 Course Fee							600	600
Art Studio Fee (per course)	-	-	50	50	60	60	50	50
(8) Media Arts (per designated course)							40	40
(8) Digital Interactive Media Arts (per designated course)							40	40
Biology Lab Fee (per course)	-	-	50	50	-	-	50	50
Chemistry Lab Fee (per course)	-	-	50	50	-	-	50	50
Earth Science Lab Fee (per course)	-	-	50	50	-	-	50	50
Science Lab Fee	-	-	-	-	60	60	-	-
(8) PSY 530 Course Fee (per course)							100	100

Physical Activity Equipment Fee					60	60		
Full Time (One Time)								
Part Time (per credit for One Course)					20	20		
(2) Science Engineering Technology Lab Fee (per course)	40	40	-	-	-	-	-	-
Math Emporium Lab Fee (Full Time and Part Time per	-	-	-	-	65	65	-	-
course)	-	-	50	50	50	50	-	-
(6) Applied Music Fee (max./sem.)								
Undergraduate (1/2 hr./1 hr. lesson)	200/400	200/400	320/620	320/620	-	-	320/620	320/620
Graduate (1/2 hr./1 hr. lesson)	200/400	200/400	320/620	320/620	-	-	320/620	320/620
Theater Lab Fee (per course)	30	30	50	50	-	-	-	-
Language Lab Fee	-	-	-	-	25	25	-	-
Physics Lab Fee (per course)	-	-	50	50	-	-	50	50
EMT Lab Fee (per course)	-	-	-	-	75	75	-	-
Counseling Procedures with Children Lab Fee	-	-	-	-	20	20	-	-
Counseling Procedures Lab Fee	-	-	-	-	200	200	-	-
Outdoor Adventure Leadership Lab Fee (per course)	-	-	-	-	30	30	-	-
Rec & Leisure Program Fee	-	-	-	-	10	10	-	-
Exercise Science Lab Fee (Standard First Aid & Safety p	-	-	-	-	40	40	-	-
Athletic Training Clinical Course Fee (per course)								
Undergraduate	-	-	-	-	60	60	-	-
Graduate	-	-	-	-	75	75	-	-
EPY 600 Course Fee (per course)	-	-	-	-	-	-	75	75
Design Lab Fee (per designated course)	65	65	-	-	-	-	-	-
MBA Challenge Exam Fee (per occurrence)	-	-	-	-	250	250	-	-
Challenge Exam Fee								
Full-time Students (per occurrence)	-	-	-	-	-	-	200	200
Part-time Students (per occurrence)	-	-	-	-	-	-	200	200
Other Students (per occurrence)	-	-	-	-	-	-	250	250
Full-time Undergraduate Program Fee (per semester)								
Music Program	-	-	-	-	-	-	150	150
Art Program	-	-	-	-	-	-	50	50
Theatre Program	-	-	-	-	-	-	150	150
Musical Theater Program	-	-	-	-	-	-	150	150

Notes:

- (1) CCSU - \$5 per semester within the University General Fee for FT students and \$3 per semester charge within the registration fee for PT students
- (2) Cap on lab fees will be set to \$80 per semester for students who enroll in 2 or more labs.
- (3) Approved Credit Card Service Fee modification to accommodate the new credit card convenience fees, rate changed effective 5/1/23. The service provider, TouchNet, recently increased the fee for international transactions to 4.25%.
- (4) Over-Registration / Excess Credit Fee applies to credit hours in excess of 18 credit hours per semester.
- (5) WCSU replaced the First Year Experience Fee with Orientation Fee. CCSU and WCSU is increased the Orientation Fee beginning with fall 2024.
- (6) ECSU added the Applied Music Fee beginning with Fall 2024 semester.
- (7) ECSU added the Undergrad Nursing Lab Fee beginning with Fall 2024 semester.
- (8) WCSU implemented new Tier II Fees beginning with Fall 2024 semester.

CONNECTICUT STATE UNIVERSITIES

eLearning Tuition and Fees

	CENTRAL							
	AY 2025				AY 2026			
	Fall and Spring			Extension Fee (per Credit Hour)	Fall and Spring			Extension Fee (per Credit Hour)
	Tuition	GUF	Total		Tuition	GUF	Total	
Undergraduate								
In State	292	350	642	642	292	350	642	642
Out of State	292	367	659	659	292	367	659	659
NE	292	367	659	659	292	367	659	659
Graduate (1)								
In State	481	328	809	809	481	328	809	809
Out of State	481	344	825	825	481	344	825	825
NE	481	344	825	825	481	344	825	825
Doctoral Program								
In State	753	356	1109	1109	753	356	1109	1109
Out of State	753	356	1109	1109	753	356	1109	1109
NE	753	356	1109	1109	753	356	1109	1109

	EASTERN							
	AY 2025				AY 2026			
	Fall and Spring			Extension Fee (per Credit Hour)	Fall and Spring			Extension Fee (per Credit Hour)
	Tuition	GUF	Total		Tuition	GUF	Total	
	292	365	657	657	292	365	657	657
	292	365	657	657	292	365	657	657
	292	365	657	657	292	365	657	657
	481	269	750	750	481	269	750	750
	481	269	750	750	481	269	750	750
	481	269	750	750	481	269	750	750

	SOUTHERN							
	AY 2025				AY 2026			
	Fall and Spring			Extension Fee (per Credit Hour)	Fall and Spring			Extension Fee (per Credit Hour)
	Tuition	GUF	Total		Tuition	GUF	Total	
Undergraduate								
In State	292	407	699	699	292	407	699	699
Out of State	292	407	699	699	292	407	699	699
NE	292	407	699	699	292	407	699	699
Graduate								
In State	484	396	880	880	484	396	880	880
Out of State	484	396	880	880	484	396	880	880
NE	484	396	880	880	484	396	880	880

	WESTERN							
	AY 2025				AY 2026			
	Fall and Spring			Extension Fee (per Credit Hour)	Fall and Spring			Extension Fee (per Credit Hour)
	Tuition	GUF	Total		Tuition	GUF	Total	
	292	344	636	636	292	344	636	636
	292	344	636	636	292	344	636	636
	292	344	636	636	292	344	636	636
	482	244	726	726	482	244	726	726
	482	244	726	726	482	244	726	726
	482	244	726	726	482	244	726	726

Note:

(1) Data Mining program (CCSU) - beginning with Fall 2023 semester, the tuition structure will be the same as the standard graduate tuition rates.

Semester Hours	FY2025 Approved (effective Fall 2024)			FY2026 Proposed (effective Fall 2025)		
	Tuition	College Services Fee	Total	Tuition	College Services Fee	Total
In-state						
1	192.00	116.00	308.00	192.00	116.00	308.00
2	384.00	116.00	500.00	384.00	116.00	500.00
3	576.00	116.00	692.00	576.00	116.00	692.00
4	768.00	137.00	905.00	768.00	137.00	905.00
5	960.00	158.00	1,118.00	960.00	158.00	1,118.00
6	1,152.00	179.00	1,331.00	1,152.00	179.00	1,331.00
7	1,344.00	200.00	1,544.00	1,344.00	200.00	1,544.00
8	1,536.00	221.00	1,757.00	1,536.00	221.00	1,757.00
9	1,728.00	242.00	1,970.00	1,728.00	242.00	1,970.00
10	1,920.00	263.00	2,183.00	1,920.00	263.00	2,183.00
11	2,112.00	284.00	2,396.00	2,112.00	284.00	2,396.00
12 or more**	2,304.00	305.00	2,609.00	2,304.00	305.00	2,609.00
Annual Full-time	4,608.00	610.00	5,218.00	4,608.00	610.00	5,218.00
Out-of-State *						
1	578.00	325.00	903.00	578.00	325.00	903.00
2	1,156.00	325.00	1,481.00	1,156.00	325.00	1,481.00
3	1,734.00	325.00	2,059.00	1,734.00	325.00	2,059.00
4	2,312.00	378.00	2,690.00	2,312.00	378.00	2,690.00
5	2,890.00	431.00	3,321.00	2,890.00	431.00	3,321.00
6	3,468.00	484.00	3,952.00	3,468.00	484.00	3,952.00
7	4,046.00	537.00	4,583.00	4,046.00	537.00	4,583.00
8	4,624.00	590.00	5,214.00	4,624.00	590.00	5,214.00
9	5,202.00	643.00	5,845.00	5,202.00	643.00	5,845.00
10	5,780.00	696.00	6,476.00	5,780.00	696.00	6,476.00
11	6,358.00	749.00	7,107.00	6,358.00	749.00	7,107.00
12 or more**	6,936.00	802.00	7,738.00	6,936.00	802.00	7,738.00
Annual Full-time	13,872.00	1,604.00	15,476.00	13,872.00	1,604.00	15,476.00
NEBHE *						
1	289.00	147.00	436.00	289.00	147.00	436.00
2	578.00	147.00	725.00	578.00	147.00	725.00
3	867.00	147.00	1,014.00	867.00	147.00	1,014.00
4	1,156.00	179.00	1,335.00	1,156.00	179.00	1,335.00
5	1,445.00	211.00	1,656.00	1,445.00	211.00	1,656.00
6	1,734.00	243.00	1,977.00	1,734.00	243.00	1,977.00
7	2,023.00	275.00	2,298.00	2,023.00	275.00	2,298.00
8	2,312.00	307.00	2,619.00	2,312.00	307.00	2,619.00
9	2,601.00	339.00	2,940.00	2,601.00	339.00	2,940.00
10	2,890.00	371.00	3,261.00	2,890.00	371.00	3,261.00
11	3,179.00	403.00	3,582.00	3,179.00	403.00	3,582.00
12 or more**	3,468.00	435.00	3,903.00	3,468.00	435.00	3,903.00
Annual Full-time	6,936.00	870.00	7,806.00	6,936.00	870.00	7,806.00

* In-state tuition and fees for neighboring States (Massachusetts, Rhode Island and New York) at the following Campuses:
 Asnuntuck, Quinebaug Valley, Three Rivers, Norwalk, Northwestern, Housatonic, and Naugatuck Valley Danbury Campus
 **Excess Credits Tuition Charge - An additional flat tuition charge of \$100 per semester shall apply when total registered credits exceed 17

Mandatory Usage Fees	FY25 Approved		FY26 Proposed	
		Max per Term		Max per Term
Clinical Program Fee-Level 1*	\$511.00	-	\$511.00	-
Clinical Program Fee-Level 2*	\$377.00	-	\$377.00	-
Advanced Manufacturing Lab Fee (per course) ***	\$200.00	-	\$200.00	-
Supplemental Course Fee Level 1 **	\$108.00	430.00	\$108.00	430.00
Supplemental Course Fee Level 2 ** (2)	\$215.00		\$215.00	
Material Fee *** (1)	\$54.00	108.00	\$54.00	108.00

* Per semester; not assess Material or Supplemental Course Fee
 ** Per course; level determined by additional contact hours
 Level 1 = 1 to 1.5 contact hours greater than credit hours
 Level 2 = 2 or more contact hours greater than credit hours
 *** Per course, where applicable

(1) Material Fee excludes Advanced Manufacturing and Nursing courses which have different material assessments.
 (2) Supplemental Course Fee Level 2 is maximum per course and maximum per Semester to \$430.
 (3) Advanced Manufacturing Program Fee with a per lab class fee of \$200. No max - # labs per semester can vary greatly.

Semester Hours	FY2025 Approved (effective Fall 2024)			FY2026 Proposed (effective Fall 2025)		
	Extension Fee	College Services Fee	Total	Extension Fee	College Services Fee	Total
In-State						
1	208.00	116.00	\$324.00	208.00	116.00	\$324.00
2	416.00	116.00	\$532.00	416.00	116.00	\$532.00
3	624.00	116.00	\$740.00	624.00	116.00	\$740.00
4	832.00	137.00	\$969.00	832.00	137.00	\$969.00
5	1,040.00	158.00	\$1,198.00	1,040.00	158.00	\$1,198.00
6	1,248.00	179.00	\$1,427.00	1,248.00	179.00	\$1,427.00
7	1,456.00	200.00	\$1,656.00	1,456.00	200.00	\$1,656.00
8	1,664.00	221.00	\$1,885.00	1,664.00	221.00	\$1,885.00
9	1,872.00	242.00	\$2,114.00	1,872.00	242.00	\$2,114.00
10	2,080.00	263.00	\$2,343.00	2,080.00	263.00	\$2,343.00
11	2,288.00	284.00	\$2,572.00	2,288.00	284.00	\$2,572.00
12	2,496.00	305.00	\$2,801.00	2,496.00	305.00	\$2,801.00
13	2,704.00	305.00	\$3,009.00	2,704.00	305.00	\$3,009.00
14	2,912.00	305.00	\$3,217.00	2,912.00	305.00	\$3,217.00
15	3,120.00	305.00	\$3,425.00	3,120.00	305.00	\$3,425.00
etc.						

Out-of-State *						
1	208.00	325.00	533.00	208.00	325.00	533.00
2	416.00	325.00	741.00	416.00	325.00	741.00
3	624.00	325.00	949.00	624.00	325.00	949.00
4	832.00	378.00	1,210.00	832.00	378.00	1,210.00
5	1,040.00	431.00	1,471.00	1,040.00	431.00	1,471.00
6	1,248.00	484.00	1,732.00	1,248.00	484.00	1,732.00
7	1,456.00	537.00	1,993.00	1,456.00	537.00	1,993.00
8	1,664.00	590.00	2,254.00	1,664.00	590.00	2,254.00
9	1,872.00	643.00	2,515.00	1,872.00	643.00	2,515.00
10	2,080.00	696.00	2,776.00	2,080.00	696.00	2,776.00
11	2,288.00	749.00	3,037.00	2,288.00	749.00	3,037.00
12	2,496.00	802.00	3,298.00	2,496.00	802.00	3,298.00
13	2,704.00	802.00	3,506.00	2,704.00	802.00	3,506.00
14	2,912.00	802.00	3,714.00	2,912.00	802.00	3,714.00
15	3,120.00	802.00	3,922.00	3,120.00	802.00	3,922.00
etc.						

NEBHE *						
1	208.00	147.00	355.00	208.00	147.00	355.00
2	416.00	147.00	563.00	416.00	147.00	563.00
3	624.00	147.00	771.00	624.00	147.00	771.00
4	832.00	179.00	1,011.00	832.00	179.00	1,011.00
5	1,040.00	211.00	1,251.00	1,040.00	211.00	1,251.00
6	1,248.00	243.00	1,491.00	1,248.00	243.00	1,491.00
7	1,456.00	275.00	1,731.00	1,456.00	275.00	1,731.00
8	1,664.00	307.00	1,971.00	1,664.00	307.00	1,971.00
9	1,872.00	339.00	2,211.00	1,872.00	339.00	2,211.00
10	2,080.00	371.00	2,451.00	2,080.00	371.00	2,451.00
11	2,288.00	403.00	2,691.00	2,288.00	403.00	2,691.00
12	2,496.00	435.00	2,931.00	2,496.00	435.00	2,931.00
13	2,704.00	435.00	3,139.00	2,704.00	435.00	3,139.00
14	2,912.00	435.00	3,347.00	2,912.00	435.00	3,347.00
15	3,120.00	435.00	3,555.00	3,120.00	435.00	3,555.00
etc.						

* In-state tuition and fees for neighboring States (Massachusetts, Rhode Island and New York) at the following campuses:
Asnuntuck, Quinebaug Valley, Three Rivers, Norwalk, Northwestern, Housatonic, and Naugatuck Valley-Danbury Campus

Mandatory Usage Fees	FY25 Approved		FY26 Proposed	
		Max per Term		Max per Term
Clinical Program Fee-Level 1*	\$511.00	-	\$511.00	-
Clinical Program Fee-Level 2*	\$377.00	-	\$377.00	-
Advanced Manufacturing Lab Fee (per course) *** (3)	\$200.00	-	\$200.00	-
Supplemental Course Fee Level 1 **	\$108.00	\$430.00	\$108.00	\$430.00
Supplemental Course Fee Level 2 ** (2)	\$215.00		\$215.00	
Material Fee *** (1)	\$54.00	\$108.00	\$54.00	\$108.00

- * Per semester; not assess Material or Supplemental Course Fee
- ** Per course; level determined by additional contact hours
Level 1 = 1 to 1.5 contact hours greater than credit hours
Level 2 = 2 or more contact hours greater than credit hours
- *** Per course, where applicable

- (1) Material Fee excludes Advanced Manufacturing and Nursing courses which have different material assessments.
- (2) Supplemental Course Fee Level 2 is maximum per course and maximum per Semester to \$430.
- (3) Advanced Manufacturing Program Fee with a per lab class fee of \$200. No max - # labs per semester can vary greatly.

CT STATE COMMUNITY COLLEGE
FY2025-26 Student Activity and Transportation Fees
Per Semester

ATTACHMENT B

<u>Campus</u>	FY2025 Approved		FY2026 Proposed	
	Full-Time	Part-Time	Full-Time	Part-Time
Asnuntuck	\$ 20.00	\$ 10.00	\$ 20.00	\$ 10.00
Capital	\$ 20.00	\$ 10.00	\$ 20.00	\$ 10.00
Gateway	\$ 20.00	\$ 10.00	\$ 20.00	\$ 10.00
Housatonic	\$ 20.00	\$ 10.00	\$ 20.00	\$ 10.00
Manchester	\$ 20.00	\$ 10.00	\$ 20.00	\$ 10.00
Middlesex	\$ 20.00	\$ 10.00	\$ 20.00	\$ 10.00
Naugatuck Valley	\$ 20.00	\$ 10.00	\$ 20.00	\$ 10.00
Northwestern	\$ 20.00	\$ 10.00	\$ 20.00	\$ 10.00
Norwalk	\$ 20.00	\$ 10.00	\$ 20.00	\$ 10.00
Quinebaug	\$ 20.00	\$ 10.00	\$ 20.00	\$ 10.00
Three Rivers	\$ 20.00	\$ 10.00	\$ 20.00	\$ 10.00
Tunxis	\$ 20.00	\$ 10.00	\$ 20.00	\$ 10.00
	\$ 240.00	\$ 120.00	\$ 240.00	\$ 120.00
Transportation Fee (U-PASS Per Semester) (1-2)	\$ 40.00	\$ 40.00	\$ 40.00	\$ 40.00
NV-Rides (3)	\$ 10.00	\$ 10.00	\$ 10.00	\$ 10.00

Notes:

- (1) Transportation Fee applies to all credit students at campuses except those who identify Naugatuck Valley and Quinebaug Valley as their home campus.
- (2) Some exclusions apply
- (3) For students identifying Naugatuck Valley as the home campus

FY2025-26 Tier II Fees

	Effective Fall 2024 Approved <u>FY2025</u>	Effective Fall 2025 Proposed <u>FY2026</u>
Educational Extension Fees		
Academic Evaluation Fee	\$15.00	\$15.00
Portfolio Assessment Fee	\$100.00	\$100.00
(1) Proctoring fee per test	\$15/\$35	\$15/\$35
(2) CT-CCNP Student Assessment Fee	\$136.25/\$316.25	\$136.25/\$316.25
(3) Nursing Media Fee	\$247.75	\$247.75
Auxiliary Activity Fees		
(4) Application Fee	\$0.00	\$0.00
(4) Program Enrollment Fee	\$0.00	\$0.00
Late Registration Fee	\$5.00	\$5.00
Replacement of Lost ID Card	\$10.00	\$10.00
(5) Replacement of Lost Parking Access Card Fee	\$15.00	\$15.00
Returned Check Fee	\$25.00	\$25.00
Late Payment Fee	\$15.00	\$15.00
Late Drop Fee (per course)	withhold 10% of tuition	withhold 10% of tuition
Installment Plan Fee	\$25.00	\$25.00
(6) CLEP Service Fee (6)	\$15.00	\$15.00
(7) Credit Card Service Fee		2.95%

Notes:

- (1) non-CCC students.
- (2) Connecticut Community College Nursing Program (CT-CCNP) Student Assessment and NCLEX-RN Preparation Fee; \$136.25 per student per semester for semesters 1-3; \$316.25 per student in semester 4. The higher fee in the final semester accounts for the cost of the NCLEX-RN Review course provided at the end of the program.
- (3) Nursing Media Fee of \$247.75 per semester represents 25% of total cost of the publisher resources is collected from students when they register for each of the four semesters of the nursing program. Based on strategic partnership with Pearson Education, Inc. and Follett, Inc., this "installment plan" will allow CCC nursing students to receive materials, including books and digital content at the beginning of the nursing program.
- (4) Beginning with Fall 2019, Application Fee and Program Enrollment Fee have been eliminated.
- (5) Capital campus replacement of Lost Parking
- (6) Authorized to a maximum amount as stated, subject to change based on CLEP fee schedule
- (7) Change to credit card service fee rate beginning with Fall 2025 semester.

	Adopted 2025 Rate	Proposed 2026 Rate	Annual Change	
			\$	%
Tier I Tuition Rates				
<u>Online Undergraduate Programs (Resident & Non Resident)</u>				
Undergraduate Tuition per credit	\$ 329	\$ 329	\$ -	0.00%
Student Services Fee	\$ 230	\$ 230	\$ -	0.00%
Technology Fee	\$ 75	\$ 75	\$ -	0.00%
<u>Online Undergraduate Programs (Military Personnel)</u>				
Active Duty, Guardsmen's and Drilling Reservist per Credit Fee	\$ 250	\$ 250	\$ -	0.00%
<u>Online Graduate Programs (Resident & Non Resident)</u>				
Graduate Tuition per credit	\$ 529	\$ 529	\$ -	0.00%
Student Services Fee	\$ 340	\$ 340	\$ -	0.00%
Technology Fee	\$ 75	\$ 75	\$ -	0.00%
Tier II Fees				
<1> <u>Course Material Fee</u>				
Digital Bookstore Access	TBD	TBD		
<u>Miscellaneous</u>				
Application Fee for Certificate or Degree Program	\$ 50	\$ 50	\$ -	0.00%
Payment Plan Registration Fee	\$ 45	\$ 45	\$ -	0.00%
Late Registration Fee	\$ 100	\$ 100	\$ -	0.00%
Late Payment Plan Fee	\$ 40	\$ 40	\$ -	0.00%
Bad Check Fee	\$ 50	\$ 50	\$ -	0.00%
Diploma Replacement	\$ 30	\$ 30	\$ -	0.00%
<u>Course Audit Fee</u>				
Undergraduate Course Audit	\$ 350	\$ 350	\$ -	0.00%
Graduate Course Audit	\$ 475	\$ 475	\$ -	0.00%
<u>Alternative Route to Certification (ARC) Early Childhood Program</u>				
ARC Tuition Per Credit	\$ 270	\$ 270	\$ -	0.00%
ARC EDTPA Credentialing Retake Fee	\$ 300	\$ 300	\$ -	0.00%
<u>Connecticut Directors Credential</u>				
Initial Level Credentialing	\$ 107	\$ 107	\$ -	0.00%
Standard Level Credentialing	\$ 134	\$ 134	\$ -	0.00%
Master Level Credentialing	\$ 161	\$ 161	\$ -	0.00%
Initial & Standard Level Renewal	\$ 80	\$ 80	\$ -	0.00%
Master Level Renewal	\$ 107	\$ 107	\$ -	0.00%
<u>Testing & Examinations</u>				
COSC Pathways Exam	\$ 100	\$ 100	\$ -	0.00%
<u>General Credit Registry</u>				
Registry for C SCU School	\$ 100	\$ 100	\$ -	0.00%
Registry for Non-C SCU School	\$ 475	\$ 475	\$ -	0.00%
Reactivate Registry	\$ 150	\$ 150	\$ -	0.00%
<u>Pharmacy Refresher</u>				
Pharmacists Refresher Courses	\$ 550	\$ 550	\$ -	0.00%
<u>Credit for Prior Learning (CPL) & Connecticut Credit Assessment Program (CCAP)</u>				
Portfolio Program Per Course Assessment Fee (Matriculated Students)	\$ 350	\$ 350	\$ -	0.00%
Portfolio Program Per Course Assessment Fee (Visiting Students)	\$ 450	\$ 450	\$ -	0.00%
Credential Evaluation under Credential Credit Program	\$ 500	\$ 500	\$ -	0.00%
CCAP Administrative Fee (Non-Profit Training Sponsor)	\$ 2,500	\$ 2,500	\$ -	0.00%

CCAP Administrative Fee (For Profit Training Sponsor)

Adopted 2025 Rate	Proposed 2026 Rate	Annual Change	
		\$	%
\$ 5,000	\$ 5,000	\$ -	0.00%

Notes to Tuition Rate & Fee Schedule

<1> *CSCU is currently performing an RFP for bookstore services. At the completion of the process, Charter Oak will begin providing digital bookstore access to students at cost.*

Calculation of Annual Tuition Rate Change				
Annual percent change in tuition based on a student taking 24 credits over the Fall and Spring semester.				
	Adopted 2024 Rate	Adopted 2025 Rate	Proposed 2026 Rate	% Change
Undergraduate				
Tuition	-	7,896	7,896	
Student !	-	460	460	
Technolc	-	150	150	
	-	8,506	8,506	0.00%
Graduate				
Tuition	-	8,160	8,160	
Student !	-	680	680	
Technolc	-	150	150	
	-	8,990	8,990	0.00%