

**BOARD OF REGENTS FOR HIGHER EDUCATION  
CT STATE COLLEGES AND UNIVERSITIES (CSCU)  
MINUTES OF REGULAR MEETING  
THURSDAY, MAY 20, 2021  
CONDUCTED VIA REMOTE PARTICIPATION**

<b>REGENTS - PARTICIPATING (Y = yes / N = no)</b>	
Matt Fleury, Chair	Y
Merle Harris, Vice Chair	Y
Richard J. Balducci	Y
Aviva D. Budd	Y
Naomi K. Cohen	Y
Felice Gray-Kemp (arrived at 10:30)	Y
Holly Howery	Y
David R. Jimenez	Y
Antonia Oglesby	Y
Audrey Redpath	Y
JoAnn Ryan	Y
Ari Santiago	N
Elease E. Wright	Y
*David Blitz, FAC Vice Chair	Y
*Colena Sesanker, FAC Chair	Y
*Kurt Westby, Labor Commissioner	N
*Deidra Gifford, Public Health Commissioner	N
*David Lehman, DECD Commissioner	N
*Charlene Russell-Tucker, Acting Education Commissioner	Y
<i>*ex-officio, non-voting member</i>	

**CSCU STAFF:**

Dr. Alice Pritchard, Chief of Staff/Chief of Operations  
 Ben Barnes, Chief Finance Officer  
 Ernestine Y. Weaver, Counsel  
 Dr. David Levinson, Interim President, Connecticut State Community College  
 Dr. Ken Klucznik, VP of Academic Affairs  
 Dr. Francine Rosselli-Navarra, Interim Vice President of Academic Programs & Curriculum  
 Mike Stefanowicz, Interim CSCU Associate Vice President for Academic & Student Affairs  
 Dr. Gregory DeSantis, Executive Director of Student Success and Academic Initiatives  
 Dr. Tanya Millner, Associate Vice President of Teaching & Learning  
 Pam Heleen, Asst. Secretary of the Board of Regents (recorder)

**CALL TO ORDER**

Chair Fleury called the meeting to order at 10:07 a.m. Following roll call, Chair Fleury declared a quorum present. Chair Fleury noted the planned absence of Interim President Dr. Jane Gates.

**ADOPTION OF AGENDA**

Chair Fleury called for a motion to adopt the meeting agenda as submitted; on a motion by Regent Cohen, seconded by Regent Balducci, the Agenda was unanimously adopted as presented.

On behalf of the Board, Chair Fleury offered congratulations to all students who are graduating this month especially noting the outstanding commitment to their academics in a time of great challenges.

**PRESENTATION OF STUDENTS FIRST SCHOLARSHIP RECIPIENTS** - Helen Sneed, CSCU Foundation Chair provided information about the scholarship and this year's competition (Attachment A). Student recipients, Joanna Chojnowski-Schroeder and L.B. expressed their gratitude. Retired President Mark Ojakian offered his thanks for establishing the scholarship in his honor and his congratulations to the 2021 recipients of the award.

**FACULTY AWARD RECOGNITION** - Regent Harris and Dr. Klucznik recognized the 2020 - 2021 Faculty Award recipients. The awards were given to faculty who distinguished themselves as outstanding teachers, promoting instructional improvements and innovation or who are doing exceptional research, scholarly, and/or creative work that informs what they do in the classroom. Regent Harris noted that the caliber of teaching and research award winners throughout the CSCU system is inspiring. Details of the presentation are included in Attachment B.

#### **OPPORTUNITY TO ADDRESS THE BOARD**

In addition to the seven speakers, the Board has received one letter. In accordance with FOI guidelines as amended during the pandemic, the communication was posted on the CSCU website immediately prior to the meeting start time and distributed to the Board in advance of the meeting. It is included as Attachment C.

The following individuals addressed the Board:

<b><u>Faculty/Public</u></b>	
Dr. Andrew Smyth	SCSU
Dr. Meghan Barboza	SCSU
Dr. Susan Holt	CCSU
Dr. Stephen Monroe Tomczak	SCSU
Maria Diamantis	SCSU
Dr. Jesse Turner	CCSU
William Fothergill	CCSU

#### **BOR CHAIR MATT FLEURY'S REMARKS**

Chair Fleury provided the following remarks:

- Congratulations to Student Regents, our Chair and Vice Chair of the Student Advisory Committee, Audrey Nielsen and Antonia Oglesby on their graduations.
- Congratulations to Ari Santiago and Rich Balducci as the Connecticut General Assembly has confirmed Regent Santiago's nomination and Regent Balducci's reappointment as CSCU Regents.
- The Executive Order modifying open meetings during the pandemic is to expire in July. Plans are in development to hold the September Board of Regents meeting in person at 61 Woodland Street in Hartford.
- Thanks to campus leaders, staff and faculty for their hard work this year to provide the fullest educational experience possible and to everyone who is planning the full operations on our campuses this fall.

- Dr. David Levinson, Interim President of the Connecticut State Community College, provided the following update on the June NECHE Progress Report. Besides showing enrollment, financial, and staffing details for the 12 colleges, NECHE has requested a report on 5 items:
  - Develop a strategic plan for CSCC and engaging faculty in the process - 24 faculty and staff from the 12 colleges have developed enrollment management plans as part of the Achieving the Dream initiative. In addition, a 49-person strategic planning taskforce is meeting regularly.
  - Integrate faculty into a “shared governance” model - Shared governance taskforce has developed a model that is currently going to each of the 12 college senates for review.
  - Align the curriculum - Over 200 faculty are involved in the work involving 37 associate degrees, 18 certificates, and 572 courses. Work will continue over the summer.
  - Implement the Guided Pathways initiative - The initiative is designed to reduce student to advisor ratios from 750 to 1 to 250 to 1. A Guided Pathways Advisor will provide a wrap-around advisement model to all students, addressing their academic and career needs, including food and shelter insecurities. By June, over 30 counselors will have been hired as Guided Pathways is rolled out at Housatonic, Middlesex, Northwestern.
  - Assure that the 12 individually accredited community colleges continue to meet the Standards for Accreditation during the consolidation process - As a former NECHE Commissioner, Dr. Levinson has been reaching out to all institutions to assist with 10-year and 5-year reviews and annual reports.

### **APPROVAL OF PREVIOUS MEETING MINUTES**

On a motion by Regent Cohen, and seconded by Regent Wright, the April 22, 2021 Regular Meeting minutes and the May 7, 2021 Special Meeting minutes were approved after a unanimous voice vote.

FAC Vice Chair David Blitz provided an informational note on the creation of a working group commissioned by Interim President Gates to develop proposals on mandatory vaccinations for returning to campus. Recommendations have been forwarded from the group to Dr. Gates for consideration.

### **CONSENT AGENDA**

Chair Fleury called for a motion on the Consent Agenda. On a motion by Regent Cohen, seconded by Regent Wright, the Consent Agenda was unanimously adopted.

### **Academic Programs**

#### **Discontinuations**

Criminal Justice-Corrections - Option - AS - Naugatuck Valley Community College  
Criminal Justice-Forensics - Option - AS - Naugatuck Valley Community College  
Criminal Justice-Law Enforcement - Option - AS - Naugatuck Valley Community College  
Criminal Justice-Security - Option - AS - Naugatuck Valley Community College  
Cell and Molecular Biology - Official Certificate Program (OCP) - Central CT State University  
Natural Sciences - MS - Central CT State University

Discontinuations (continued)

Accelerated Criminology to Criminal Justice - BA to MS - Central CT State University

Continued Accreditation of a Licensed Program

Transition Specialist - Official Certificate Program (OCP) - Central CT State University

Modifications

Special Education - MS Education - Western CT State University [Modification of Instructional Delivery]

Literacy and Language Arts - MS Education - Western CT State University [Modification of Instructional Delivery]

Interdisciplinary Studies - BA - Western CT State University [Modification of Instructional Delivery]

Communication Studies - BA - Western CT State University [Modification of Instructional Delivery]

Criminal Justice - C2 Certificate - Naugatuck Valley Community College [Significant Modification of Courses and Course Substitutions]

Criminal Justice - Public Safety - AS - Naugatuck Valley Community College [Significant Modification of Courses and Course Substitutions]

Human Services/Pre-Social Work - AS - Naugatuck Valley Community College [Program Name Change to: "Human Services"]

Digital Media Production - Associate of Applied Science (AAS) - Middlesex Community College [Significant Modification of Courses/Course Substitutions, Modification of Instructional Delivery, and, Program Name Change to: "New Media Production"]

Replication of a College of Technology (COT) Program

Technology Studies: Energy Management - C2 Certificate - Asnuntuck Community College

Technology Studies: Energy Management - AS - Asnuntuck Community College

Technology Studies: Energy Management - C2 Certificate - Northwestern CT Community College

Technology Studies: Energy Management - AS - Northwestern CT Community College

New Programs

Addiction Studies: Advanced Standing - MS - Western CT State University

Cybersecurity Operations - AS - Tunxis Community College

Forensic Studies - C2 Certificate - Naugatuck Valley Community College

Law Enforcement - C2 Certificate - Naugatuck Valley Community College

Promotions and Tenures

Central CT State University

Eastern CT State University

Southern CT State University

Western CT State University

CSU Faculty Research Grants

Central CT State University

Eastern CT State University

Southern CT State University

Western CT State University

Revision to the Connecticut State Community College Mission and Vision

Finance Items

Graduate Interns Change in Policy at the CSUs

Manchester CC Electric Easement - Eversource

---

**RESOLUTIONS APPROVED ON CONSENT**

**Discontinuations:**

RESOLVED: That the Board of Regents for Higher Education approve the discontinuation of a program, Criminal Justice: Corrections (CIP Code: 43.0107 / OHE# 007646), leading to an Associate of Science at Naugatuck Valley Community College, effective June 1, 2022.

RESOLVED: That the Board of Regents for Higher Education approve the discontinuation of a program, Criminal Justice: Forensics (CIP Code: 43.0107 / OHE# 015378), leading to an Associate of Science at Naugatuck Valley Community College, effective June 1, 2022.

RESOLVED: That the Board of Regents for Higher Education approve the discontinuation of a program, Criminal Justice: Law Enforcement (CIP Code: 43.0107 / OHE# 007647), leading to an Associate of Science at Naugatuck Valley Community College, effective June 1, 2022.

RESOLVED: That the Board of Regents for Higher Education approve the discontinuation of a program, Criminal Justice: Security (CIP Code: 43.0107 / OHE# 007648), leading to an Associate of Science at Naugatuck Valley Community College, effective June 1, 2022.

RESOLVED: That the Board of Regents for Higher Education approve the discontinuation of a program, Cell and Molecular Biology (CIP Code: 26.0204 / OHE# 010168), leading to an Official Certificate Program at Central Connecticut State University, effective May 24, 2021.

RESOLVED: That the Board of Regents for Higher Education approve the discontinuation of a program, Natural Sciences (CIP Code: 40.9999 / OHE# 000097), leading to a Master of Science at Central Connecticut State University, effective May 2021.

RESOLVED: That the Board of Regents for Higher Education approve the discontinuation of a program, Accelerated Criminology to Criminal Justice (CIP Code: 43.0104 / OHE# 019953), leading to an accelerated Bachelor of Arts to Master of Science at Central Connecticut State University, effective May 20, 2021.

**Continued Accreditation:**

RESOLVED: That the Board of Regents for Higher Education grant continued accreditation of a program, Transition Specialist (CIP Code: 13.1001 OHE # 010180) leading to an Official Certificate at Central Connecticut State University.

**Modifications:**

RESOLVED: That the Board of Regents for Higher Education approve the modification of a program - Special Education (CIP Code: 13.1001 / OHE# 018722), specifically a change in modality from hybrid to online modality - leading to a Master of Science in Education at Western Connecticut State University.

RESOLVED: That the Board of Regents for Higher Education approve the modification of a program - Literacy and Language Arts (CIP Code: 13.1315 / OHE# 018721), specifically a change in modality from hybrid to online modality - leading to a Master of Science in Education at Western Connecticut State University.

RESOLVED: That the Board of Regents for Higher Education approve the modification of a program - Interdisciplinary Studies (CIP Code: 30.0000 / OHE# 018548), specifically the addition of online modality to the existing on ground modality - leading to a Bachelor of Arts at Western Connecticut State University.

RESOLVED: That the Board of Regents for Higher Education approve the modification of a program - Communication Studies (CIP Code: 09.0101 / OHE# 000171), specifically the addition of online modality to the existing on ground modality - leading to a Bachelor of Arts at Western Connecticut State University.

RESOLVED: That the Board of Regents for Higher Education approve the modification of a program - Criminal Justice (CIP Code: 43.0107 / OHE# 002945), specifically modification of courses and course substitutions - leading to a C2 Certificate at Naugatuck Valley Community College.

RESOLVED: That the Board of Regents for Higher Education approve the modification of a program - Criminal Justice/Public Safety (CIP Code: 43.0107 / OHE# 001665), specifically modification of courses and course substitutions - leading to an Associate of Science at Naugatuck Valley Community College.

RESOLVED: That the Board of Regents for Higher Education approve the modification of a program - Human Services / Pre-Social Work (CIP Code: 44.0000 / OHE# 001658), specifically a name change to Human Services - leading to an Associate of Science at Naugatuck Valley Community College.

RESOLVED: That the Board of Regents for Higher Education approve the modification of a program - Digital Media Production (CIP Code: 09.0702 / OHE# 003045), specifically modification of courses and options and a name change to New Media Production - leading to an Associate of Science at Middlesex Community College.

#### **Replication of a College of Technology (COT) Program**

RESOLVED: That the Board of Regents for Higher Education approve the replication of a College of Technology Program in Technology Studies: Energy Management (CIP Code: 15.0503 / OHE# TBD) - leading to a C2 Certificate at Asnuntuck Community College; and grant its accreditation for a period of seven semesters beginning with its initiation, such initiation to be determined in compliance with BOR guidelines for new programs approved on or after April 3, 2020.

RESOLVED: That the Board of Regents for Higher Education approve the replication of a College of Technology Program in Technology Studies: Energy Management (CIP Code: 15.0503 / OHE# TBD) - leading to an Associate of Science at Asnuntuck Community College; and grant its accreditation for a period of seven semesters beginning with its initiation, such initiation to be determined in compliance with BOR guidelines for new programs approved on or after April 3, 2020.

RESOLVED: That the Board of Regents for Higher Education approve the replication of a College of Technology Program in Technology Studies: Energy Management (CIP Code: 15.0503 / OHE# TBD) - leading to a C2 Certificate at Northwestern Connecticut Community College; and grant its accreditation for a period of seven semesters beginning with its initiation, such initiation to be determined in compliance with BOR guidelines for new programs approved on or after April 3, 2020.

RESOLVED: That the Board of Regents for Higher Education approve the replication of a College of Technology Program in Technology Studies: Energy Management (CIP Code: 15.0503 / OHE# TBD) - leading to an Associate of Science at Northwestern Connecticut Community College; and grant its accreditation for a period of seven semesters beginning with its initiation, such initiation to be determined in compliance with BOR guidelines for new programs approved on or after April 3, 2020.

### **New Programs**

RESOLVED: That the Board of Regents for Higher Education approve the licensure of a program in Addiction Studies: Advanced Standing (CIP Code: 42.2899, OHE# TBD) - leading to a Master of Science at Western Connecticut State University; and grant its accreditation for a period of seven semesters beginning with its initiation, such initiation to be determined in compliance with BOR guidelines for new programs approved on or after April 3, 2020.

RESOLVED: That the Board of Regents for Higher Education approve the licensure of a program in Cybersecurity Operations (CIP Code: 43.0016, OHE# TBD) - leading to an Associate of Science at Tunxis Community College; and grant its accreditation for a period of seven semesters beginning with its initiation, such initiation to be determined in compliance with BOR guidelines for new programs approved on or after April 3, 2020.

RESOLVED: That the Board of Regents for Higher Education approve the licensure of a program in Forensic Studies (CIP Code: 42.0100, OHE# TBD) - leading to a C2 Certificate at Naugatuck Valley Community College; and grant its accreditation for a period of seven semesters beginning with its initiation, such initiation to be determined in compliance with BOR guidelines for new programs approved on or after April 3, 2020.

RESOLVED: That the Board of Regents for Higher Education approve the licensure of a program in Law Enforcement (CIP Code: 42.0107, OHE# TBD) - leading to a C2 Certificate at Naugatuck Valley Community College; and grant its accreditation for a period of seven semesters beginning with its initiation, such initiation to be determined in compliance with BOR guidelines for new programs approved on or after April 3, 2020.

### **Promotions and Tenures**

RESOLVED: That the Board of Regents for Higher Education approve the 2021 promotions and tenures recommended by the presidents of the Connecticut State Universities.  
(Attachment D)

### **CSU Faculty Research Grants**

RESOLVED: That the Board of Regents for Higher Education approve the funding recommendations of the CSU-AAUP Faculty Research Grants' Selection Committee for the 2021-22 program year. (Attachment E)

### **Revision to the Connecticut State Community College Mission and Vision**

WHEREAS: Section 10a-1c of the Connecticut General Statutes requires the Board of Regents to develop and implement distinct missions for the constituent units of the Connecticut State Colleges and Universities System; and

WHEREAS: The Board of Regents has resolved to consolidate the 12 individual community colleges within the Connecticut State Colleges and Universities System into a singularly structured and accredited College with 12 campuses; and

WHEREAS: The Board of Regents seeks approval via a Substantive Change from the Commission on Institutions of Higher Education at the New England Association of Schools and Colleges (NEASC) for accreditation of the consolidated College; and

WHEREAS: It is a critically important and requisite step that the governing body develops a statement of mission and purposes for the consolidated College in seeking its accreditation, per the NEASC Standards for Accreditation; and

WHEREAS: The Board of Regents, at the March 9, 2018 meeting, approved the proposed mission and vision prior to naming the College, and

WHEREAS: The Board of Regents, at the May 14, 2020 meeting, named the single accredited College: Connecticut State Community College, therefore, be it

RESOLVED: That the Board of Regents approve the addition of the name of Connecticut State Community College to the previously approved mission and vision statement:

~~The Community College of Connecticut~~ CONNECTICUT STATE  
COMMUNITY COLLEGE Mission

~~The Community College of Connecticut~~ CONNECTICUT STATE COMMUNITY COLLEGE provides access to academically rigorous and innovative education and training focused on student success. The College supports excellence in teaching and learning, makes data-informed decisions, promotes equity, and advances positive change for the students, communities, and industries it serves.

~~The Community College of Connecticut~~ CONNECTICUT STATE COMMUNITY COLLEGE Vision

~~The Community College of Connecticut~~ CONNECTICUT STATE COMMUNITY COLLEGE will be recognized for exceptional student success, educational leadership, and transformative collaboration with business and industry, government, educational, and key stakeholders while advancing diverse opportunities for Connecticut's citizens and communities.

#### Finance Items:

##### Graduate Interns Change in Policy at the CSUs

WHEREAS, Board Resolution 09-65 establishes a Graduate Internship program among the Connecticut State Universities, and

WHEREAS, the purpose of the Graduate Internship is to provide an intense, two-year, on-the-job training and development experience for graduate students in a variety of disciplines who are exploring careers in fields related to student services in higher education, and

WHEREAS, pursuant to Resolution 09-65, Graduate Interns enrolled at one of the four universities of the Connecticut State University System as full-time graduate students shall be required to pay full-time tuition, a University General Fee sufficient to defray the cost of student accident insurance, and the cost of student sickness insurance (if not waived by the student in accordance with Board policy), but the balance of the University General Fee as well as all other fees imposed by the Board is waived. The resolution also provides that Graduate Interns enrolled as part-time graduate students shall receive a waiver of part-time tuition and all fees including summer session and winter session Extension fees up to a total maximum of 18 credit hours, provided the interns are enrolled in courses required for completion of their degree program, and

WHEREAS, each University is authorized to pay stipends to Graduate Interns enrolled as matriculated graduate students, not to exceed \$15,000 for the academic year (nine months), and not to exceed \$5,000 for summer sessions (three months); said stipends will be appropriately prorated for part-time assignments, and

WHEREAS, Board Resolution 09-65 authorizes each University one Graduate Intern for each 500 full-time equivalent students or major fraction thereof, and

WHEREAS, as a result of the enrollment changes triggered by the pandemic, the number of Graduate Interns allowed under the policy will drop steeply for the fall of 2021 and may preclude renewing existing Graduate Interns who normally would be allowed to continue in the program, now therefore be it

RESOLVED, that for the 2021-22 and 2022-23 academic years the limitation on the number of Graduate Interns be set at 25 per university while enrollment recovers from the pandemic.

**Manchester CC Electric Easement - Eversource**

WHEREAS, Eversource has an existing electric easement at the northeast corner of Manchester Community College's campus near the Ramey Road entrance; and

WHEREAS, Eversource has a separate existing public utility easement along Bidwell Street in the Town of Manchester; and

WHEREAS, Eversource plans to run a new electric underground cable across both easements; and

WHEREAS, Eversource has requested a new 2,620 square foot, 20' by approximately 130', to connect the two existing easements which will provide a more direct utility route, and

WHEREAS, the new easement will not affect campus function or aesthetics; therefore, be it

RESOLVED, the Board of Regents grants approval to Eversource for an underground electric easement at the northeast corner of Manchester Community College's campus.

**ACADEMIC & STUDENT AFFAIRS COMMITTEE**

**Action Item: ACME Policy - Alignment and Completion of Math and English**

Regent Harris provided the following background for Regents who are not part of the ASA Committee:

- We all have the same goals; we are interested in the success of our students.
- ACME, the Alignment and Completion of Math and English is a policy that the ASA Committee (and all those who have worked more than two years on the policy) believe will move our community college students towards better completion of gateway math and English courses.
- The proposal is to move students from a prerequisite to a corequisite model for math and English with student supports.
- The discussion regarding prerequisite versus corequisite support began in 2012 with deliberation and passage of PA 12-40. This was a legislative process, not a proposal of the BOR. There was disagreement to the proposal regarding placement of all students into corequisite courses and the final law allowed for limited placement of students in prerequisite developmental education.
- National trends have been reviewed and the data indicates that the community colleges are not where they should be in terms of passing rates for the gateway courses. This is especially true for minoritized students.
- Between 2019 and 2020, a number of workgroups/individuals have been engaged in development of the ACME policy presented, including Ken Klucznik, Greg Desantis, Francine Rosselli-Navarro, Heidi Zenie, Mike Stefanowicz, Kim Sorrentino, and Amanda McTaggart. The Charles A. Dana Center at the University of Texas at Austin has helped to identify best practices across the country to inform Connecticut's policy.
- Data supporting the policy put forth is included in the "Building on Student Success" Infographic (Attachment F).
- Major components of the ACME policy:
  - Corequisite not prerequisite support - Students are enrolled in a gateway course with additional just-in-time support. The courses and supports will be student-specific and faculty designed.

- Placement into the appropriate level of support will be based on high school GPA, along with other measures.
- Mathematics Pathways will be aligned to a student's program and career goals (i.e., STEM algebra as the foundation for STEM programs).
- Discussions regarding ACME have been intense over the past two years. In the fall of 2020, a draft policy was widely circulated among faculty and many comments and recommendations for changes were submitted. Staff listened and many changes were made, including the implementation timeline.
- ACME will be implemented no earlier than 2023 and no later than 2025. This will allow an opportunity for pilots and assessment along the way.
- Dr. Tanya Millner, Interim Associate Vice President of Teaching and Learning for Connecticut State Community College, voiced her support of ACME and shared her experiences regarding developmental education as a student and academic.
  - She quoted the VP of Academic Affairs at Amarillo College in Texas. "Rigor with the proper supports and a focus on deep learning is how colleges operationalize love and care for students."
  - A study done in Florida at the end of 2020 showing the removal of the prerequisite model, and in most cases the removal of developmental education all together, is starting to show a great deal of good for students.
- ACME policy:
  - addresses equity with the goal of increasing passage of gateway math and English courses and reducing the achievement gap in completion for Black and Latinx students
  - emphasizes that one course will be built with different supports for different students
  - clearly states that faculty will be responsible for building courses and supports, including how courses are offered
  - has advisement as an essential component
  - requires student outcomes as the measure of student learning
  - calls for continual assessment with annual reporting on Key Performance Indicators
- Regent Harris made the following revisions to the ACME policy (in the Board packet)
  - on page 139 in section 12E, add the word contact between 3 and hours
  - on page 140 in section 13 E, same addition for English as math above
  - on page 147 in section 18dv, remove the word curriculum in the first line

A motion to approve the amendments to the revised policy was made by Regent Harris and seconded by Regent Cohen. The motion was approved unanimously.

A motion to approve the following resolution and the revised policy was made by Regent Howery and seconded by Regent Balducci.

WHEREAS the Board of Regents has endorsed the implementation of Guided Pathways practices and timely completion of gateway, college-level mathematics and English is consistent with these practices and the four pillars of Guided Pathways - clarifying academic and career pathways for students, helping students select a plan of study, keeping students on their plan, and creating meaningful learning experiences, and

WHEREAS in keeping with the Board of Regents directive regarding the Students First implementation of Guided Pathways, Provost Gates charged the ACME work group to “use Guided Pathways design principles and existing expertise in the CSCU community colleges to develop and recommend policies and practices that facilitate student completion of college level math and English within the first year or 24 credits. The group will facilitate the alignment of the appropriate math and English requirements with programmatic, transfer, and workforce needs,” and

WHEREAS the ACME work group, led by Guided Pathways managers for the Choice Architecture team and consisting of faculty, staff, and administrators from all seventeen CSCU institutions as well as University of Connecticut (<https://www.ct.edu/gp/groups>), and supported by the Dana Center of the University of Texas at Austin, submitted recommendations for the design of practices to improve timely completion of mathematics and English as reflected in KPIs 4, 5, and 6 of the annual community college KPI report (<https://www.ct.edu/gp/kpi>), and

WHEREAS a policy team comprising the ACME leads and staff from system office considered these recommendations and research regarding national best practices in the completion of mathematics and English and developed a policy that places all students, with the exception of English Language Learners who may need prior language instruction, directly into college-level mathematics and English with supports as determined by assessment based primarily on high school GPA with supplemental use of additional measures, and

WHEREAS the policy also stipulates the development of mathematics pathways to align first-year mathematics requirements with students’ Areas of Study and career goals, and

WHEREAS this policy is meant to work in conjunction with other Guided Pathways practices as well as policies previously approved by the Board, including the annual KPI report, the Areas of Study policy, the Holistic Case Management Advising (HCMA) policy, and the College and Career Success 101 course policy,

NOW, THEREFORE, BE IT RESOLVED: That the Board of Regents for Higher Education approve the Alignment and Completion of Mathematics and English policy with the understanding that Connecticut State Community College will fully implement the policy no earlier than the fall of 2023 and no later than the fall of 2025.

- Acting Commissioner of Education Charlene Russell-Tucker provided the following remarks in support of the ACME policy:
  - Discussions about learning challenges and models are occurring in the K-12 environment as they emerge from the pandemic. The connection to Dr. Millner’s quote about “rigor” is reflected in those discussions, as well; how is learning accelerated, how are supports built and tiered.
  - The goal is to get the high school students better prepared to begin their community college or university experience.
  - P20 WIN Report - College Enrollment, Remediation & Credit Attainment for Public High School Graduates is available to review on the CT.gov site. More than 37,000 letters went to parents of middle and high school students who performed well on standardized test encouraging strongly the pursuit of a rigorous high school course load (i.e., AP classes and dual enrollment programs).
  - Trying to minimize the financial and social costs of remedial college education is a top priority.
- Student Regent Nielsen asked if in a corequisite model students can opt out of the supports. Dr. DeSantis replied that this is a corequisite model in which students will be assigned to the supports and that most students will engage in the supports provided. There is an extensive required advisement process proposed for students to consider their options to possibly opt out of the supports.
- Student Regent Nielsen commented that in her experience, when a student is given the opportunity to reduce their workload, they will even if it removes help and support.

- Faculty Advisory Committee Chair Sesanker indicated that the comments provided by Dr. Millner are at odds with the prevailing position of the faculty who teach these courses. Professor Sesanker read a prepared statement into the record; the full text is included as Attachment G.
- Regent Cohen noted that everyone shares the desire that more of our students meet success so that they continue their education and complete their path. Approval of this resolution will not take effect until 2023 at the earliest, allowing for faculty course and support development.
- Regent Cohen requested that given the implementation timeline and the woefully low outcomes for developmental education, that we move forward with the resolution and take two years to determine exactly how ACME will roll out. Regent Cohen made a motion to Call the Question. With two more questions outstanding, Regent Cohen rescinded her motion.
- Student Regent Nielsen objected to the possibility of discussion being closed. She continued with her request for clarification about placing the burden on the colleges to manage the credit hours of the supportive work without placing an undue burden on the students. Dr. DeSantis responded that extensive discussions have taken place over the last two years to address this issue; the consensus was that the institution, in developing the courses, would make determinations based on how the supports are designed. Dr. DeSantis also added that there are examples of this process already in the system that a campus can use as a model.

After a roll call vote, the motion was passed with 10 “yes” votes and 2 “no” votes (Nielsen and Oglesby).

### **EXECUTIVE SESSION**

In the interest of time, an executive session was not held.

### **ADJOURNMENT**

A motion to adjourn was made by Regent Cohen, seconded by Regent Howery and passed unanimously. The meeting was adjourned at 12:19 p.m.

Submitted,

Alice Pritchard  
Secretary of the CT Board of Regents for Higher Education

## Attachment Listing

May 20, 2021 BOR Regular Meeting

Attachment A	Students First Scholarship Presentation
Attachment B	Faculty Award Presentation
Attachment C	Letter from the Public - CCET
Attachment D	Promotions and Tenure
Attachment E	CSU Faculty Research Grants
Attachment F	ACME Infographic
Attachment G	Sesanker Statement Concerning ACME



# STUDENTS FIRST SCHOLARSHIP

EST. 2020

CT State Colleges and Universities  
Foundation, Helen G. Sneed - President

# **SPIRIT OF THE SCHOLARSHIP**

**In honor of (retired) President Mark E. Ojakian - 2021**

## **Reach**

**12 Community Colleges**

## **Inclusiveness**

**All students, all majors**

## **Whole Student**

**Overcome obstacles and  
trauma**

## **Educational Journey**

**Complex, nonlinear & linear**

## **Goals & Dreams**

**Unique to them**

# SCHOLARSHIP CRITERIA

## **Reach**

**CT resident at application  
and time of award**

## **Inclusive**

**All majors including  
general studies & letter of  
recommendation not  
required**

## **Whole Student**

**Invited to share obstacles  
they've overcome such as  
discrimination and near  
homelessness**

## **Educational Journey**

**GPA of 2.50 or higher  
AS degree, now or within the  
past 12 months**

## **Goals & Dreams**

**Personal essay, what  
“students first” means to  
you while in college**

**\$2,020.00 award can be used for tuition, fees, tutoring services, textbooks, laptops, tablets and supplies specifically outlined in a syllabus.**

# The Competition

51 applications of which

35 met the criteria:

2 – CCC

1 – Housatonic

2 – Middlesex

7 – Naugatuck Valley

1 – Northwestern

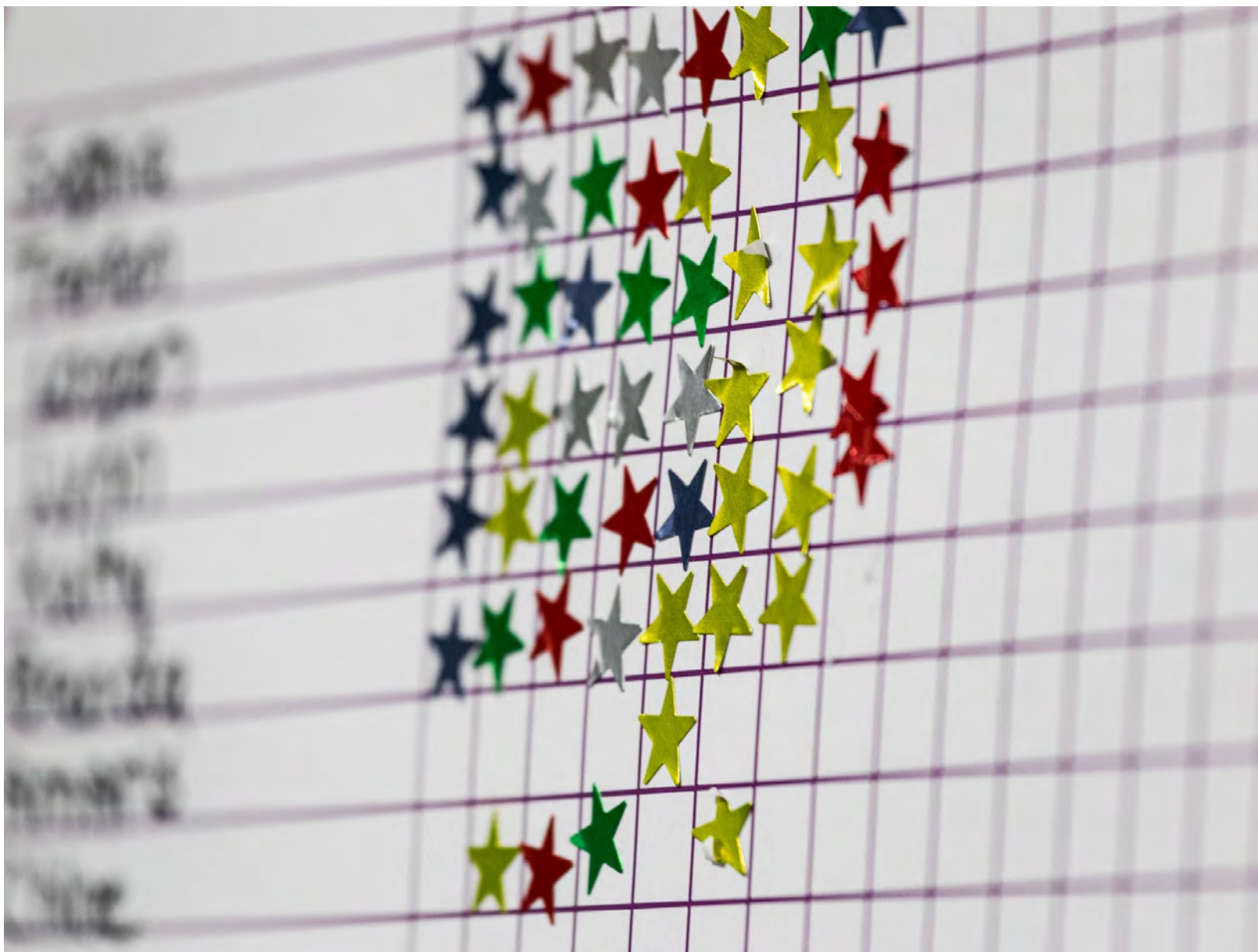
5 – Norwalk

2 – Quinebaug

8 – Three Rivers

7 - TCC





## 2 AWARDEES

- **Joanna Chojnowski-Schroeder**

Graduating in May from Tunxis Community College with an associate degree in Business Studies. She will transfer to Central CT State University for the fall.

- **L.B. is from Cromwell**

Graduating in May from Middlesex Community College with an associate degree in Political Science. He will transfer to Central CT State University for the fall.

\* \$2,020.00 each student \*

# APPRECIATION & RECOGNITION



Board of Regents  
CSCU Foundation



15 Donors

3 Donors at \$1,000.00 each  
Fund balance of \$5,525.00



Scholarship Committee  
Colleges & Universities  
Student Applicants

# THANK YOU!



Students First Scholarship



#StudentsFirstScholarship

<https://www.ct.edu/foundation/sf>



**Board of Regents**

# 2021 Board of Regents Faculty Awards

**Recognizing Excellence in Teaching and Research**



# **Board of Regents**

## **Board of Regent Faculty Awards**

- Campus-based awards may be presented to faculty from each of the 4 universities and the 12 community colleges.
- Based on campus-wide awards, two system-wide awards are presented – one from the four universities and Charter Oak and one from among the 4 community colleges.
- Teaching Awards
- Research Awards (universities and Charter Oaks State College only)
- Scholarly Excellence (community colleges only)
- Adjunct Faculty Teaching Awards



# Board of Regents

## Board of Regent Faculty Awards Selection Committee Members

Dr. Charles Baraw – SCSU	Dr. Steven Brady - SCSU
Dr. Mark Cistulli – CCSU	Dr. Neeta Connally – WCSU
Dr. Kelli Custer – WCSU	Ms. Jacqueline Decker – Tunxis CC
Dr. Mark Fabrizi – ECSU	Mr. Douglas Goodrich – Naugatuck CC
Dr. Chelsea Harry – SCSU	Ms. Marie Kulesza – CCSU
Dr. Andrea Levy – Middlesex CC	Mr. Andrew Marvin – Three Rivers CC
Dr. Fatma Pakdil – ECSU	Ms. MaryBeth Rajczeski – Asnuntuck CC
Ms. Shelly Stoehr-McCarthy – SCSU	Dr. H. Howell Williams – WCSU
Dr. Richard Zipoli - SCSU	



# Board of Regents

## Campus-Based Board of Regents Teaching Awards for the Connecticut State Universities

**Dr. Maya Aloni**

Associate Professor, Psychology  
Western Connecticut State University

**Dr. Susan DeRosa**

Associate Professor, English  
Eastern Connecticut State University

**Dr. Rachel Furey**

Assistant Professor, English  
Southern Connecticut State University

**Dr. Susan Koski**

Associate Professor, Criminology and Criminal Justice  
Central Connecticut State University



# Board of Regents

## System-wide Board of Regents Teaching Awards for the Connecticut State Universities

***Dr. Maya Aloni***

*Associate Professor, Psychology*

*Western Connecticut State University*

*Danbury*





# Board of Regents

## Campus-Based Board of Regents Teaching Awards for the Connecticut Community Colleges

<b>Dr. Vandana Basu</b> Assistant Professor, Math and Science Three Rivers Community College Norwich	<b>Dr. Patrick Bryan</b> Associate Professor, STEM Middlesex Community College Middletown	<b>Amely Cross</b> Associate Professor, STEM Asnuntuck Community College Enfield
<b>Dr. Matthew Dunne</b> Associate Professor, Behavioral & Social Sciences Housatonic Community College Bridgeport	<b>Joshua Hummel</b> Associate Professor, Humanities Capital Community College Hartford	<b>Tatiana Machado</b> Associate Professor, Business Administration Tunxis Community College Farmington
	<b>Jessica McLawhon</b> Associate Professor, Social Sciences Gateway Community College New Haven	



## **Board of Regents**

### System-wide Board of Regents Teaching Awards for the Connecticut Community Colleges

***Dr. Matthew Dunne***

*Associate Professor,  
Behavioral & Social Sciences  
Housatonic Community  
College, Bridgeport*





# Board of Regents

## Campus-Based Board of Regents Research Awards for the Connecticut State Universities

**Dr. Thomas J. Balcerski**

Associate Professor, History  
Eastern Connecticut State University, Willimantic

**Dr. Joshua Cordeira**

Associate Professor, Biological and Environmental  
Sciences  
Western Connecticut State University, Danbury

**Dr. Rati Kumar**

Associate Professor, Communication  
Central Connecticut State University, New Britain

**Dr. Jason W. Smith**

Assistant Professor, History  
Southern Connecticut State University, New Haven



# Board of Regents

## System-wide Board of Regents Research Awards for the Connecticut State Universities

***Dr. Thomas J. Balcerski***

*Associate Professor, History*

*Eastern Connecticut State University*

*Willimantic*





# **Board of Regents**

## **Campus-Based Board of Regents Scholarly Excellence Awards for the Connecticut Community Colleges**

### **Dr. Kobie Stewart**

Assistant Professor, Careers  
Asnuntuck Community College, Enfield

### **Joyce Voisine**

Associate Professor, Early Childhood Education  
Tunxis Community College, Farmington



# Board of Regents

## System-wide Board of Regents Scholarly Excellence Awards for the Connecticut Community Colleges

***Dr. Kobie Stewart***

*Assistant Professor, Careers  
Asnuntuck Community College  
Enfield*





# Board of Regents

## Board of Regents Adjunct Faculty Teaching Award Nominees

<b>Kathleen Powers</b> Liberal Arts Asnuntuck Community College	<b>Alexandra Carey</b> Humanities Capital Community College	<b>Debra Kressu-Owen</b> Business Housatonic Community College
<b>Jessica V. Zolciak</b> Biology Manchester Community College	<b>Patti Klein</b> English Tunxis Community College	<b>Dr. Sylvia Jalil-Gutierrez</b> Anthropology Central Connecticut State University
<b>Dr. Regina Miller</b> Social and Behavioral Sciences/ Early Childhood Education Charter Oak State College	<b>Brenda Westberry</b> Sociology and Criminology Eastern Connecticut State University	<b>Elena Epifano Byrne</b> English Southern Connecticut State University



## **Board of Regents**

System-wide Board of Regents  
Adjunct Faculty Teaching Awards

Two awards were given – one for the Universities  
and Charter Oak State College, one for the  
Community Colleges



# Board of Regents

***Dr. Regina Miller***

*Social and Behavioral Sciences/  
Early Childhood Education  
Charter Oak State College*



***Jessica V. Zolciak***

*Biology  
Manchester Community College  
Manchester*



## **Board of Regents**

Congratulations to all the  
Recipients of the 2021 Board of  
Regents Faculty Awards!!

**CCET Statement on ACME**  
**May 20, 2021**


CCET strongly opposes the ACME proposal to eliminate developmental coursework and to make embedded supports optional and ungraded. Our review of the commissioned and highly selective research underlying ACME, along with our extensive, careful, and fully documented survey of national research, supports two conclusions: 1) Developmental English is an essential vehicle for equity at the community colleges; and 2) The additional instruction and the contact hours built into embedded coursework are designed for students who need the instruction and the hours. Those embedded supports should be mandatory. ACME will diminish the learning of students in the CSUS system, with particularly damaging effects on minority students. We therefore urge the BOR to reject the ACME proposal.



Central Connecticut State University

**MEMORANDUM**

**TO:** Dr. Jane Gates, Interim President  
Connecticut State Colleges and Universities System

**FROM:** Dr. Zulma Toro, President  
Central Connecticut State University 

**DATE:** April 20, 2021

**SUBJECT:** Promotion and Tenure Recommendations

I am pleased to present my recommendations for instructional faculty promotion and tenure to be effective with the Academic Year 2021-22:

To Professor

Kuan-Pin Chiang, Marketing  
Stacy Christensen, Nursing  
Mathew Foust, Philosophy  
Susan Koski, Criminology & Criminal Justice

To Associate Professor

Christina Barmon, Sociology  
Michael Bartone, Literacy, Elementary & Early Childhood Education  
Julia Blau, Psychological Science  
Cassandra Forsythe, Physical Education & Human Performance  
Tan Leng Goh, Physical Education & Human Performance  
Steven Johnson, Engineering  
Yejin Kim, Communication  
Kerri Langevin, Nursing  
Byung Lee, Criminology & Criminal Justice  
Maria Mongillo, Educational Leadership, Policy & Instructional Tech.  
Michael North, Communication  
Thomas Rein, Anthropology  
Felice Russell, Educational Leadership, Policy & Instructional Tech.  
Samantha Schenck, Economics  
Carolyne Soper, Economics  
Roger Vogeler, Mathematical Sciences  
Samuel Zadi, World Languages, Literature & Cultures

(Continued)

The following will be granted Tenure

Christina Barmon, Sociology  
Michael Bartone, Literacy, Elementary & Early Childhood Education  
Julia Blau, Psychological Science  
Cassandra Forsythe, Physical Education & Human Performance  
Tan Leng Goh, Physical Education & Human Performance  
Steven Johnson, Engineering  
Yejin Kim, Communication  
Jeffrey Kreeger, Geography  
Kerri Langevin, Nursing  
Byung Lee, Criminology & Criminal Justice  
Michael North, Communication  
Rachel Rachler, Biology  
Thomas Rein, Anthropology  
Samantha Schenck, Economics  
Carolyne Soper, Economics  
Samuel Zadi, World Languages, Literature & Cultures

/sjm



EASTERN CONNECTICUT STATE UNIVERSITY

A Liberal Education. Practically Applied.

*Office of the President*

Date: April 19, 2021

TO: Dr. Jane Gates  
President, Connecticut State Colleges and Universities

FROM: Dr. Elsa M. Núñez *ENM*  
President

SUBJECT: Recommendations for Promotion and Tenure

I recommend the following individuals for promotion and/or tenure for action by the Board of Regents at its May 2021 meeting. The effective date for all actions is August 23, 2021.

**For Tenure:**

Dr. Ana Funes-Maderey, Department of Political Science, Philosophy, and Geography  
Mr. Robert Greene, Department of Art and Art History  
Dr. Scott Moore, Department of History  
Dr. Steve Muchiri, Department of Economics and Finance  
Dr. Vijay Veerappan, Department of Biology  
Dr. Patrick Vitale, Department of Political Science, Philosophy, and Geography

**For Promotion to the rank of Professor:**

Dr. Garrett Dancik, Department of Computer Science  
Dr. Susan DeRosa, Department of English  
Dr. Mehdi Khorami, Department of Mathematical Sciences  
Dr. Meredith Metcalf, Department of Environmental Earth Science  
Dr. Niti Pandey, Department of Management and Marketing

**For Promotion to the rank of Associate Professor:**

Dr. Alex Citurs, Department of Accounting and Business Information Systems  
Dr. Michelle Ferrer, Department of Kinesiology and Physical Education  
Dr. Ana Funes-Maderey, Department of Political Science, Philosophy, and Geography  
Mr. Robert Greene, Department of Art and Art History  
Dr. Scott Moore, Department of History  
Dr. Steve Muchiri, Department of Economics and Finance  
Ms. Anya Sokolovskaya, Department of Performing Arts  
Dr. Vijay Veerappan, Department of Biology  
Dr. Patrick Vitale, Department of Political Science, Philosophy, and Geography



EASTERN CONNECTICUT STATE UNIVERSITY

A Liberal Education. Practically Applied.

Page-2

President Jane Gates

April 19, 2021

**For Promotion to the rank of Associate Librarian:**

Ms. Angela Walker, J. Eugene Smith Library

April 13, 2021

Dr. Jane Gates  
Interim President, Board of Regents for Higher Education  
Connecticut State Colleges and Universities  
61 Woodland Street  
Hartford, CT 06105-2237

Dear Dr. Gates:

The following are my recommendations for Promotion and Tenure, which will be effective August 23, 2021:

### **TENURE**

Mr. James Aselta, M.B.A. (Accounting)  
Dr. Sara Baker Bailey (Communication, Media, and  
Screen Studies)  
Dr. Laurie Bonjo (Counseling and School Psychology)  
Dr. Christopher Budnick (Psychology)  
Dr. Raymond Cotrufo (Recreation, Tourism and Sport  
Management)  
Dr. Carmen Coury (History)  
Dr. Denver Fowler (Educational Leadership)  
Mr. Alexander Girard, M.F.A. (Art)  
Dr. Mohammad Islam (Computer Science)  
Dr. Dushmantha Jayawickreme (Earth Science)

Ms. Carrie Michalski, M.S.N., J.D. (Nursing)  
Dr. Khoa Huu Nguyen (Finance)  
Dr. Jason Patalinghug (Economics)  
Dr. Melanie Savelli (Communication, Media, and Screen  
Studies)  
Dr. Jason W. Smith (History)  
Dr. Natalie Starling (Counseling and School  
Psychology)  
Dr. Alev Yildirim (Finance)  
Dr. Jia Yu (Economics)  
Dr. Victoria Zigmont (Public Health)

### **PROMOTION**

#### **From Assistant to Associate Professor:**

Dr. Andrea Adimando (Nursing)  
Dr. Meghan Barboza (Biology)  
Dr. Laurie Bonjo (Counseling and School Psychology)  
Dr. Christopher Budnick (Psychology)  
Dr. Ray Cotrufo (Recreation, Tourism, and Sport  
Management)  
Dr. Carmen Coury (History)  
Dr. Kara Faraclas (Special Education)  
Dr. Michael Fisher (Biology)  
Mr. Alexander Girard, M.F.A. (Art)  
Dr. Steven Hoffler (Social Work)  
Dr. Mohammad Islam (Computer Science)

Dr. Rachel Jeffrey (Biology)  
Dr. Kimberly Lacey (Nursing)  
Mr. Paul Levatino, M.F.T. (Social Work/MFT)  
Dr. Jason Patalinghug (Economics)  
Dr. Jason W. Smith (History)  
Dr. Natalie Starling (Counseling and School  
Psychology)  
Dr. Christopher Trombly (Educational Leadership)  
Dr. Binlin Wu (Physics)  
Dr. Jia Yu (Economics)  
Dr. Victoria Zigmont (Public Health)



Page 2  
Promotion & Tenure  
April 13, 2021

**From Associate to Full Professor**

Dr. Sousan Arafeh (Educational Leadership)  
Dr. Kelly Bordner Blake (Psychology)  
Dr. Nicholas Edgington (Biology)  
Dr. Jess Gregory (Educational Leadership)  
Dr. Klay Kruczek (Mathematics)  
Dr. Kelly Mabry (Communication Disorders)

Dr. James MacGregor (Recreation, Tourism, and Sport Management)  
Dr. David Petroski (Communication, Media, and Screen Studies)  
Dr. Debra Risisky (Public Health)  
Dr. Todd Schwendemann (Physics)  
Dr. Stephen Monroe Tomczak (Social Work)

**From Athletic Trainer I to Athletic Trainer II**

Michael Ruiz

**From Coach A to Coach I**

Robert Eggerling

I request that the Board of Regents act on these recommendations at its May 20, 2021 meeting. Please let me know if you have any questions.

Sincerely,



Joe Bertolino  
President

cc: R. Prezant, T. Tyree

JB/meh



OFFICE OF THE PRESIDENT

DR. JOHN B. CLARK

**To:** Dr. Jane McBride Gates  
Interim President, Provost & Senior V.P. Academic & Student Affairs  
Connecticut State Colleges & Universities

**From:** Dr. John B. Clark

A handwritten signature in black ink, reading "John B. Clark".

**Date:** April 19, 2021

**Re:** 2<sup>nd</sup> Revised WCSU Promotion & Tenure Recommendations

I support and concur with the recommendations of Provost Missy Alexander that the following faculty members receive promotion and tenure:

***Tenure***

Dr. Ethan Balk, Health Promotion & Exercise Science Department  
Dr. Daniel Baluha, Chemistry Department  
Dr. Diane Bennett, Nursing Department  
Dr. Dan Coffman, Computer Science Department  
Dr. Justin Cowan, Theatre Arts Department  
Dr. Nicole DeRonch, Education & Educational Psychology Department  
Ms. Christine DiCarro, Library Services  
Dr. Kristin Giamanco, Biology & Environmental Sciences Department  
Dr. Jackie Guzda, Communication & Media Arts Department  
Dr. Greg Haynes, Music Department  
Ms. Joni Lerner, Theatre Arts Department  
Ms. Sabrina Marques, Art Department  
Dr. Karen McLean, Social Work Department  
Dr. Manoj Misra, Social Sciences Department  
Mr. John Roche, Writing, Linguistics & Creative Process Department  
Ms. Sharon Yamen, Division of Justice & Law Administration

Dr. Jane McBride Gates  
April 19, 2021  
Page 2

***Promotion to Professor***

Mr. Jamie Begian, Music Department  
Dr. Jim Boyle, Physics, Astronomy & Meteorology Department  
Dr. Neeta Connally, Biology & Environmental Sciences Department  
Dr. Xiaowen Jiang, Accounting Department  
Dr. Monica Sousa, Nursing Department  
Dr. Trisha Stewart, Education & Educational Psychology Department  
Dr. Xiaodi Wang, Mathematics Department  
Ms. Sharon Yamen, Division of Justice & Law Administration

***Promotion to Associate Professor***

Dr. Ethan Balk, Health Promotion & Exercise Science Department  
Dr. Daniel Coffman, Computer Science Department  
Dr. Justin Cowan, Theatre Arts Department  
Dr. Kristin Giamanco, Biology & Environmental Sciences Department  
Dr. Greg Haynes, Music Department  
Ms. Krista Heybruck, Health Promotion & Exercise Science Department  
Dr. Stephanie Kuhn, Education & Educational Psychology Department  
Ms. Joni Lerner, Theatre Arts Department  
Mr. Aaron Lin, Finance Department  
Ms. Sabrina Marques, Art Department  
Mr. John Roche, Writing, Linguistics & Creative Process Department  
Dr. Michael Shoshani, Mathematics Department

***Promotion to Associate Librarian***

Ms. Christine DiCarro, Library Services

c: M. Alexander, Academic Affairs  
D. Barrett, Promotion & Tenure Committee  
F. Cratty, Human Resources

**CCSU 2021 Roster of Faculty Research Grants for BOR**

<b>Faculty Rank</b>	<b>Last Name</b>	<b>First Name</b>	<b>Department</b>	<b>Grant Title</b>	<b>Funded Amount</b>
Professor	Abadiano	Helen	Literacy, Elementary, and Early Childhood Education	Program Completers' Impact on P-12 Student Learning	\$5,000.00
Assistant Professor	Abbas	Syed	Biology	Does prolonged exposure to blue light cause aggression in female crayfish?	\$5,000.00
Assistant Professor	Albayram	Yusuf	Computer Science	Investigating the effectiveness of personalized cybersecurity education	\$5,000.00
Professor	Barr	Burlin	English	Fragments from a Discourse on Masculinity	\$5,000.00
Professor	Barrington	Candace	English	Watching the Watcher: John Lydgate's "The Temple of Glas"	\$2,500.00
Assistant Professor	Barriteau Phaire	Candace	Literacy, Elementary and Early Childhood Education	Educating in Emergencies: What can early childhood educators learn from the classrooms that never closed during the Covid-19 pandemic?	\$4,090.00
Associate Professor	Bragg	Caleb	Psychological Science	Work-Family Balance Intervention Through Family Goal Setting	\$3,200.00
Assistant Professor	Bray	Alicia	Biology	Invasive Japanese Beetle Management with Tiphia Wasps in Connecticut	\$5,000.00

Professor	Burkholder	Thomas	Chemistry and Biochemistry	The Role of Race, Gender, and Preparation on Student Learning in General Chemistry	\$5,150.00
Associate Professor	Chakraborty	Sourav	Chemistry and Biochemistry	Determination of pheromones such as heneicosane, tricosane and pentacosane using solid phase micro-extraction (SPME) coupled with hyphenated mass spectrometry techniques (LC-MSn and GC-MS)	\$4,826.00
Associate Professor	Chase	Daniel	Biomolecular Sciences	Subcellular localization of dopamine receptors DOP-1 and DOP-3 in the DA9 neuron of C. elegans	\$5,000.00
Associate Professor	Chen	Sixia	Computer Science	Fixing Reordering Anomalies in CRDTs for Collaborative Text Editing	\$4,500.00
Professor	Cohen	Diana	Political Science	Wheels of Change: Women's Cycling on the International Stage	\$3,762.00
Professor	Crundwell	Guy	Chemistry and Biochemistry	Palladium complex formation with heterocyclic aromatic ligands - How studying stable palladium-ligand intermediates can help us understand the degradation of commercial palladium catalysts over time	\$4,953.00

Professor	Dharavath	Haji Naik	Computer Electronics & Graphics Technology	G7 Master Compliance through a Color Managed Digital Printing Workflow (CMDPW)	\$5,000.00
Professor	Dowling	Robert	English	A Place in Time: The Life and Work of Sam Shepard	\$5,000.00
Assistant Professor	Edwards	Jessica	Literacy, Elementary and Early Childhood Education	Using Diverse Picture Books to Strengthen Social and Emotional Skills	\$1,600.00
Associate Professor	Efremoff	Theodore	Art	Sowing the Tempest: Seeds of Change in Climate Fact and Myth	\$5,000.00
Associate Professor	Flinn	Brian	Art	Digital Landscapes	\$3,250.00
Assistant Professor	Garbovskiy	Yuriy	Physics & Engineering Physics	Modeling and Measuring Ionic Phenomena in Liquid Crystal Materials	\$5,000.00
Associate Professor	Gilmore	Susan	English	"Language of the Unheard": Riot on the American Cultural Stage	\$2,500.00
Assistant Professor	Goh	Tan Leng	Physical Education and Human Performance	The Effects of Before School Physical Activity on Social and Emotional Learning, Physical Fitness and Physical Activity	\$10,000.00
Professor	Gotchev	Ivan	Mathematical Sciences	Cardinal Functions on T1-topological Spaces	\$5,000.00
Assistant Professor	Gu	Shijie	Mathematics	On Z-compactifiability of manifolds	\$5,000.00

Professor	Halkin	Sylvia	Biology	Changes over Time and Space in the Song Repertoires of Northern Cardinals, "Cardinalis cardinalis"	\$3,000.00
Professor	Hammad	Khaled	Engineering	Inflow Conditions and the Flow Behavior of Submerged Annular Viscoplastic Jets	\$5,000.00
Associate Professor	Hapeman	Paul	Biology	Assessment of Methods for Detecting Everglades Mink (Neovison vison evergladensis) in Fakahatchee Strand State Preserve	\$5,000.00
Associate Professor	Hartwig	Heidi	English	Tracing Conversion in the Notebooks, Journals, and Novels of J.-K. Huysmans	\$5,000.00
Professor	Hoopengardner	Barry	Biomolecular Sciences	RNA editing as a character for phylogenetic relationships in velvet worms	\$4,800.00
Associate Professor	Hughes	Heidi	Management & Organization	Generation Z: Workplace values, attitudes, experiences and expectations	\$3,500.00
Assistant Professor	Johnson	Steven	Engineering	Analysis of the Surface Oxide Layer on Light Metal Alloy Powders Towards Enhanced Powder Consolidation	\$5,000.00
Assistant Professor	Kim	Eunhye Grace	Geography	Creative MICE (Meetings, Incentives, Conventions/conferences, and Exhibitions) Tourism: Building Synergies with Cultural Heritage Tourism	\$4,999.00
Professor	King	Thomas	Biomolecular Sciences	Making a genetic assignment for the spontaneous "squiggle tail" (squig) mutation in mice	\$5,000.00

Professor	Kurkovsky	Stan	Computer Science	Cross-Platform Mobile Application Development: Frameworks and Analysis	\$5,000.00
Professor	Kusaila	Michelle	Accounting	Corporate Social Responsibility and Juror Auditor Liability Decisions	\$5,000.00
Assistant Professor	Liu	Yan	Educational Leadership, Policy and Instructional Technology	School Principal Qualifications, Leadership Emphases, and School Outcomes: A Lens of Educational Equity	\$5,000.00
Associate Professor	Maurer	Sarah	Chemistry and Biochemistry	Condensation of amino acids and alcohols to form primitive cell membranes for the origins of life	\$4,640.00
Associate Professor	Melendez-Rhodes	Tatiana	Counselor Education and Family Therapy	Comparison of relationship quality of couples who are married and couples who cohabitate	\$3,900.00
Associate Professor	Meng	Yunliang	Geography	COVID-19 Death Rates and County Subdivision Level Contextual Characteristics: A Connecticut Case Study	\$3,000.00
Professor	Merenstein	Beth	Sociology	Implementing Curriculum: How Race and Racism are Taught in History Classes	\$4,934.00
Professor	Mitrano	John	Sociology	American Indians and Route 66: Collecting the Stories of The Mother Road's Indigenous People	\$4,150.00

Professor	Naoumov	Viatcheslav	Engineering	Hybrid Propellant Rocket Engine Test Facility Upgrade, Improvement of the Technology of Temperature Measurements and Fabrication of Solid Propellant Grains and Study of the Combustion of Papaffine-Based Fuel at Wide Range of the Equivalence Ratios	\$4,931.00
Associate Professor	Olson	Elizabeth	English	Embedded Access: Using Course Structure to Benefit Students with Disabilities in Composition Courses	\$2,500.00
`	Park	Sangho	Computer Electronics and Graphics Technology	Sensor-based Intelligence for Smart Environment	\$4,850.00
Assistant Professor	Patterson	Yvonne	Social Work	Examining Cultural Relevance in Baccalaureate Social Work Education	\$2,500.00
Professor	Penniman	Clayton	Biology	Temporal, Spatial, and Life Stage Variability in Community Physiological Profiles of Heterotrophic Prokaryotes in the Biofilm Attached to the Thalli of "Fucus vesiculosus", an Ecologically Important Mid-Intertidal Brown Seaweed	\$5,000.00
Professor	Perdomo	Oscar	Mathematics	Search for new periodic solutions of the n-body problem	\$10,000.00
Professor	Pope	Cynthia	Geography	The Gendered Impacts of COVID-19 in Belize, Central America	\$5,000.00

Assistant Professor	Potter	Christopher	Biology	Development of a C3H/HeJ mouse model colony and associated laboratory technologies needed to conduct clinical studies in the treatment of Alopecia Areata	\$5,000.00
Professor	Reeder	Linda	Manufacturing & Construction Management	Mary Colter's Design Processes and Construction Techniques	\$2,035.00
Professor	Saha	Krishna	Mathematical Sciences	Testing the Equality of the Risk Difference in the Analysis of Correlated Binary Data	\$5,000.00
Professor	Sharma	Nimmi	Physics and Engineering Physics	Illuminating Atmospheric Dynamics and Aerosol Transport with Lasers	\$5,000.00
Assistant Professor	Singh	Gurbakhshash	Mathematical Sciences	Extending Log-Binomial Model and Log Cumulative Probability Model for correlated data	\$5,000.00
Assistant Professor	Smith	Jessica	Biomolecular Sciences	Mechanisms of Extracellular Electron Transfer by strains of "Geobacter sulfurreducens"	\$5,000.00
Professor	Snyder	Jason	Marketing	Attack of the Podcasts: Assessing the Use of Humor in Podcast Ads	\$5,000.00
Professor	Sommers	Brian	Geography	World War II Memorialization as it is Impacted by Modern Balkan Politics	\$5,000.00
Assistant Professor	Stewart	Alicia	Special Education & Interventions	Investigating Teacher Knowledge and Preparedness of Implementing Evidence-Based Reading Instruction Across Content Areas for Students with Inattention	\$2,500.00

Assistant Professor	Takemae	Natsuko	Special Education & Interventions	Autobiographical Memory Study: Systematic Applications of Universal Design for Learning to Teacher Candidates' Reflective Cycle, Learning Process, and Embedded Support	\$7,500.00
Professor	Westcott	Barry	Chemistry and Biochemistry	Molecular Structure of Models for Metal Impurities in Petroleum	\$4,975.00
Professor	Wizevich	Michael	Geological Sciences	Tracing Sediment Sources for the Mesozoic Hartford Basin by Dating of Detrital Zircons	\$5,000.00
Assistant Professor	Zalewski	Sarah	Counselor Education and Family Therapy	The experiences of burnout and self-care in school counseling students	\$7,900.00
Associate Professor	Zalewski	Leanne	Art	Book Project: "American Women Shaping Art History: Late Nineteenth-Century Authors, Clara Erskine Clement and Clara Stranahan"	\$1,693.00
Professor	Zlatareva	Neli	Computer Science	Building Natural Language to SPARQL Interfaces for Semantic Web Applications	\$4,000.00
Total					\$292,638

**ECSU 2021 Roster of Faculty Research Grants for BOR**

Principal Investigator		Grant Information	
Name	Department	Grant Title	Amount Funded
Michele Bacholle	World Languages	From “Bad Girl” to Harki’s Wife and The Invisible Woman	5,000
Thomas Balcerski	History	“The Party of No: When Democrats Were Conservative”	4,500
Tao Chen	Art & Art History	Sequoia-the Diminishing Giant	5,000
Timothy Cochran	Music	The Musical Construction of Bernard Herrmann’s Reputation	4,338
Brian Day	Theatre	Dreamers: An original episodic streaming series	5,000
Daniel Donaghy	English	The Price of Building a City; A Collection of Original Poems	4,000
Maeve Doyle	Art & Art History	On-Site Research for "Modeling Networks in Gothic Manuscripts"	5,000
Okon Hwang	Music	Nanta: Korean Percussion Music Genre	5,000
Stefan Kamola	History	Iran under Mongol rule	4,500
Raouf Mama	English	The Good Samaritan and Burning Candles	4,500
Kristen Morgan	Theatre	Paper Presentation at the 16th International Conference on Design Principles & Practices	3,676
Jamel Ostwald	History	Applying Computer Vision to Historical Images	2,000
Afarin Rahmanifar	Art & Art History	“The Women of the Wings”	5,000
Allison Speicher	English	Fictions of Age: A Literary History of Aging in Nineteenth-Century America	2,024
Christopher Torockio	English	Murmurs: A Novel	4,000
Anthony Aidoo	Mathematical Science	Morphological pyramids and wavelets on the quincunx lattice approach to improving X-ray images	5,000
Bryan Connolly	Biology	Updating Herbarium Records in the State of Connecticut	3,500

Peter Drzewiecki	Environmental and Earth Science	Developing a Geological Model for Recognition of Ancient Playa Deposits Based on the Lower Jurassic East Berlin and Portland Formations, Central Connecticut	4,376
Amy Groth	Biology	Expression and function of important developmental genes in <i>C. elegans</i>	1,000
Joshua Idjadi	Biology	Are all degraded reefs the same? How algal communities might influence parrotfish behavior and reef recovery.	3,975
Syed Islam	Physical Science	Application of Surface Enhanced Raman Spectroscopy (SERS) for Trace Analysis in Forensics and Art Conservation	5,000
Kurt Lucin	Biology	Characterizing Bacteria Within the Brain	4,500
Barbara Murdoch	Biology	Further characterization of the scorpion microbiome	4,000
Bryan Oakley	Environmental and Earth Science	Publication of a manuscript in the Journal of Marine Science and Management and persistence of sorted bedforms on a microtidal wave-dominated shoreface	5,000
Vijay Veerappan	Biology	Forward genetics of symbiotic nitrogen fixation and regulation of flavonoid pigmentation in the model legume plant <i>Medicago truncatula</i>	4,500
Sarah Baires	Sociology	The Materiality of Culture: an analysis of ceramics from the Native American City of Cahokia	2,000
Sukeshini Grandhi	Accounting and BIS	Insights for the design of digital tools for managing and sharing personal genomics information:	4,124
		Exploration of the impacts and sharing practices of Direct-to-Consumer genomic information	
Brianna Halladay	Economics and Finance	Anchoring in the Domain of Political Preferences	4,500
Hao 'Alan' He	Accounting and BIS	Task Types and Incentives in a Sequential Multi-Task Context	4,000

Kwangwon Lee	Education	Evaluating the Effectiveness of an Alternative Practicum in Early Childhood Special Education	7,884
Xing Liu	Education	Bayesian Analysis of Ordinal Response Variables in Educational Research: A Comparison of Noninformative and Informative Priors	7,424
Sarah Nightingale	Sociology	Sexual Assault Response Efforts and Institutional Courage on College Campuses	3,309
Fatma Pakdil	Management and Marketing	IMPLEMENTING STATISTICAL PROCESS CONTROL IN MONITORING LENGTH OF STAY, READMISSION RATE, AND DISCHARGE COST AT HOSPITALS WITH LEAN MANAGEMENT PERSPECTIVE	9,000
Racheal Pesta	Sociology	Underrepresented: Exploring the Barriers to Police Work among Potential Female Recruits	1,260
Theresa Severance	Sociology	Familial Incarceration and Young Adults: Exploring Risks and Outcomes Among College Students	3,159
Megan Stanton	Sociology	Co-Production in HIV Service Organizations: A community-based participatory study	5,000
Caitlin T. Vasquez-O'Brien	Psychological Science	Developing an Understanding of Childhood Knowledge (D.U.C.K.)	4,000

**SCSU 2021 Roster of Faculty Research Grants for BOR**

Applicant's Information				Grant Proposal Information	Amount Funded
Faculty Rank	Last Name	First Name	Department	Grant Title	
Professor	Heidkamp	Christian Patrick	Environment, Geography, & Marine Sciences	Assessing the Just Transition Potential of an Ocean Cluster based Economic Development Approach in Greenland	\$4,974
Professor	Liu	Yan	Information and Library Science	Urban Library Services to Mobile Users	\$5,000
Associate Professor	Smoyer	Amy	Social Work	Women's Lived Experience of Incarceration in Alabama	\$5,000
Professor	Yang	Charlie	Management/IB	Healthcare Professionals' Attitudes Towards Mindfulness-Based Interventions	\$5,000
Associate Professor	Roe	Sarah	History	The History of Female Medicine and the Rise of Technology: how norms and values have shaped the way we understand women	\$5,000
Professor	Serchuk	Camille	Art	Mapping by Eye: Cartographies of Direct Observation in Medieval and Early Modern Western Europe	\$5,000
Assistant Professor	McPherson	Casey	Counseling and School Psychology	Determining the Effectiveness of a Literacy Toolkit for Informal Educators	\$4,924
Assistant Professor	Zigmont	Victoria	Public Health	2 Years Later: A Follow-Up Study to Understand Changes in Student Food Insecurity	\$5,000
Associate Professor	Groffman	Joshua	Music	Creation of live electronics for Halcyon: an Opera	\$4,938

Professor	Marsoobian	Armen	Philosophy	The Khachkars of Djulfa: Challenging Genocide Denial by Virtually Recovering Armenia's Lost Cultural Heritage	\$5,000
Assistant Professor	Baker Bailey	Sara	Communication, Media, and Screen Studies	"It's a lot of Labor Just to Exist": An Understanding of Workplace Diversity	\$5,000
Associate Professor	Risky	Deb	Public Health	Academic Outcomes and Campus Engagement Among Students in Living Learning Communities	\$5,000
Assistant Professor	Richmond	Andrew	English	Reading in Place: Contextualizing Medieval Reactions to Climate Change through Digital Models	\$5,000
Professor	Abe	Jo Ann	Psychology	Habits, Goals, and Self-Regulation	\$5,000
Assistant Professor	Axon	Stephen	Environment, Geography, & Marine Sciences	The visibility, feasibility, and practicality of tiny house construction in New England	\$4,050
Assistant Professor	Kelly	Miriah	Environment, Geography, & Marine Sciences	Assessing the Similarities and Differences of Coastal Conflict Concerns among United Nations Framework Convention on Climate Change (UNFCCC) Constituents	\$4,950
Professor	Michael	Rogers	Anthropology	Late Pleistocene and Holocene Archaeology at Gona, Ethiopia	\$5,000
Associate Professor	Njoku	Anuli	Public Health	Barriers and Facilitators to Seasonal Influenza and COVID-19 Vaccination Uptake among Black and Latinx New Haven Residents: A Mixed Methods Study	\$5,000
Associate Professor	Walters	Kenneth	Psychology	Sluggish Cognitive Tempo, ADHD, and Functional Impairment among College Students	\$2,500
Professor	Brownell	Mia	Art	Zoonotic Tonic	\$5,000

Professor	Irwin	Julia	Psychology	Norming the Hearing Assessment in Response to Noise Screener (HeARS)	\$5,000
Professor	Schmitt	Elena	World Languages and Literatures	A Longitudinal Approach to the Study of Heritage Language in Young Adults	\$5,000
Associate Professor	Barboza	Meghan	Biology	Description of solitary chemosensory cells in the Florida manatee using archived histology tissue samples	\$5,000
Professor	Coca	Adiel	Chemistry	Novel Catalysts in the Synthesis of Tetrazole Derivatives and Antibacterial Studies of Tetrazole Compounds	\$5,000
Assistant Professor	Reyes	Loida	Social Work	Examining Students' Perceptions of Culturally Inclusive Content in the Baccalaureate Social Work Curriculum	\$3,760
Assistant Professor	Bode	Patricia	Art	The Remember Love Recovery Project	\$3,750
Associate Professor	Kalbfleisch	Elizabeth	English	Anti-Scientism and the Politics of Literacy Instruction in America	\$3,750.00
Associate Professor	Al Seesi	Sahar	Computer Science	Computational Pipeline for Gene Allele Specific Expression (ASE) Prediction	\$3,600
Assistant Professor	Cooper Boemmels	Jennifer	Earth Science	Understanding the Timing and Regional Significance of Cretaceous Crustal Deformation in Northern New England	\$3,675
Associate Professor	Edgington	Nicholas	Biology	Comparative & Functional Genomics of Tandem Gene Duplication in Actinobacteria viruses	\$3,750
Associate Professor	Acri	Mary	Social Work	Exploring the effects of Non-Directive Equine-Facilitated Play Therapy on children with anxiety	\$3,750.00

Associate Professor	Kim	Younjun	Economics	Does Technological Change Increase the Poverty Rate?	\$1,875.00
Professor	Prince	Melvin	Marketing	Threat and Coping Appraisal in Response to Availability of COVID-19 Vaccine	\$7,500.00
Professor	Cardone	Resha	World Languages and Literatures	Art, Activism, and Chile's Feminist Uprising from 2018 through the Covid-19 Pandemic	\$3,750.00
Professor	Palma	Pina	World Languages and Literatures	Pontano and the Renaissance at the Court of Aragon	\$3,750.00
Professor	Slomba	Jeff	Art	Return to Materiality: 3D printing modls for clay casting and modeling of relief sculpture	\$3,750.00
Professor	Vu	Thuan	Art	Translating Vietnamese Imagery	\$3,750.00
Professor	Antonios	Imand	Computer Science	Modeling measurement and time alignment errors in electrical smart grids	\$3,750
Assistant Professor	Brady	Steven	Biology	Wood frog population geonomics in polluted landscapes	\$3,750
Assistant Professor	Cross	Emma	Environment, Geography, & Marine Sciences	Does multi-species ocean farming improve meat and shell quality of farmed shellfish compared to shellfish-only aquaculture?	\$3,747
Associate Professor	Weinbaum	Jonathan	Biology	Continued Excavation and Interpretation of a Late Triassic fossil site in the southwestern United States	\$3,750

Assistant Professor	Wang	Zheni	Management/IB	Dealing with the Work Scheduling Challenges: A complete temporal analysis of employees' situational work motivation and well-being	\$7,125.00
Associate Professor	Wieland	Alice	Management	Role of Gendered Social Cognitions in Organizations	\$3,750.00
Associate Professor	Weng	Miaowei	World Languages and Literatures	History and Memory in Contemporary Spain	\$3,750.00
Assistant Professor	Hwang	Candy	Chemistry	Reducing Biofilm Formation in Implanted Medical Devices by Disrupting Quorum Sensing in <i>Pseudomonas aeruginosa</i>	\$3,750
Associate Professor	Ryder	Todd	Chemistry	Virtual Screening to Identify Novel Inhibitors of SARS-CoV-2	\$3,750
Associate Professor	Permubilly	Sebastian	Social Work/MFT	Impact of COVID-19 on the Personal Wellbeing of Members of Higher Education in Connecticut During Campus Closures: Perspectives of Faculty, Students, and Non-Teaching Staff	\$3,306.75
Professor	Chevan	David	Music	A Klezmer Purim Spiel	\$3,750.00
Professor	Coron	Cynthia	Earth Science	Ash Fall-Induced Climate Change: Archival Lake Records, Meriden, CT	\$3,668
Associate Professor	Kearns	James K.	Chemistry	Can Liquid Chromatography Mass Spectrometry be used to identify new natural products/antibiotic molecules for the treatment of <i>Borrelia burgdorferi</i> (the Lyme Infection)?	\$3,750

Associate Professor	Barnes	Ericka	Chemistry	Quantum Chemical Calculations of Reference Benchmark Energies for Atoms, Molecules, and Ions	\$2,453
Associate Professor	Hossain	Md	Computer Science	Effectiveness of Deep Features in Serial Fusion Based Biometric Systems	\$2,500.00
Professor	Chandler	Jeremy	Art	Spotted at First-Light: Creating and Exhibiting Photographic Artwork	\$2,500.00
Assistant Professor	Jeffrey	Rachel	Biology	Modification of dopamine system with enriched environment exposure in adolescents	\$2,500
Professor	Olney	Patricia	Political Science	Donald Trump and Mexico's Perception of the United States: Surviving the Binational Caciquismo	\$1,700.00
Associate Professor	Abd El-Raouf	Amal	Computer Science	A Cost-Effective Real Time People Counting System	\$2,500
Professor	Crawford	Sarah	Biology	Use of Drosophila melanogaster as a Research Model to Investigate Environmental Factors Linked to Autism Spectrum Disorder	\$2,500
Associate Professor	Pang	Jiong Dong	Chemistry	Creating a Welcoming Classroom Environment	\$1,250
Total					

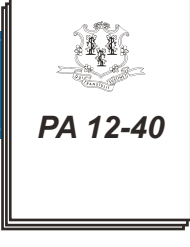
**WCSU 2021 Roster of Faculty Research Grants for BOR**

Applicant's Information				Grant Proposal Information	
Faculty Rank	Last Name	First Name	Department	Grant Title	Funded
Professor	Astrup	Margaret	Music	CD Recording of Abridges Opera <i>Hansel and Gretel</i> by Engelbert Humperdinck	\$10,000
Associate Professor	DeRonck	Nicole	Education	Diversity Matters: Attracting and Retaining School Counselors of Color	\$10,000
Associate Professor	Stewart	Tricia	Education	Social Justice, Community Supported Agriculture, and Other Grassroots Support Address Food Insecurity in Connecticut	\$10,000
Associate Professor	Aloni	Maya	Psychology	Are People Reluctant to Date Those Who Adhere to a Gluten-Free Diet? Examining the Causes of People's Dating Decisions	\$4,992
Associate Professor	Boyle	James	Physics, Astronomy and Meteorology	Deployment of Surface Drifting Salinity Buoys in Polar Regions as Part of an International High-Latitude Salinity Field Campaign	\$5,000
Assistant Professor	Cordeira	Joshua	Biology	Evaluating the Reward of Very High-Fat Diet	\$4,739
Assistant Professor	D'Aries	Anthony	Creative & Professional Writing	Still River Writers: An Anthology of Unheard Connecticut Voices	\$5,000
Professor	Eckstein	Jessica	Communication & Media Arts	Psychometrics and Utility of the Technology-Mediated Abuse (TMA) Scale: Extending Reliability and Validity to Diverse Samples and Expert-Validating IPN Stakeholders, II	\$4,947
Professor	Gadkar-Wilcox	Wynn	History	An Intellectual History of the Buddhist Movement in Vietnam 1946-1966	\$2,500
Assistant Professor	Giamanco	Kristin	Biology	Towards Understanding of the Cellular Conditions Needed for Perineuronal Nets to Form	\$5,000

Professor	Han	Xiaoqi	Marketing	The Virginity of Novelty: How Consumers' Perceptions of Virginity Shape Their Preference for New Products	\$5,000
Professor	Hawkins	Stacey Alba	World Languages & Cultures	Poetry Translations	\$5,000
Associate Professor	Huang	Carol	Finance	Impacts of Corporate Social Responsibility Activities on Firm Financial Performance: Evidence from the Airline Industry	\$4,995
Professor	Jordan	Kathleen Casey	Justice & Law Administration	Guru-Rapist Typology: Identification of Variables and Isolation of Causal Factors Significant to Cult-Related Sexual Abuse	\$5,000
Assistant Professor	Krell	Rayda	Biology	Effect of Native Plant Meadow Restoration on Insect Biodiversity	\$5,000
Associate Professor	Marino	Kim	Justice & Law Administration	Coronavirus Behind Bars: The Effect of the Pandemic on Connecticut Prisons	\$0
Associate Professor	McLean	Karen	Social Work	Examining Cultural Relevance in Baccalaureate Social Work Education	\$3,760
Associate Professor	Monette	Michelle	Biology	The Impact of Climate-Change Related Stressors on the Gill Transcriptome of Atlantic Killifish	\$5,000
Professor	Nelson	Mary	Psychology	The Effect of Differentiated Messages on Student Learning in Statistics	\$5,000
Professor	Owoye	Oluwole	Social Sciences	The Economic Consequences of the United States-China Trade Wars and the Global Pandemic	\$5,000
Professor	Pinou	Theodora	Biology	Is Lunar Illumination Associated with Abundance of Sea Turtle Nesting?	\$5,000
Associate Professor	Prieto	Judith	Chemistry & Biochemistry	Analytical Approaches for the Study of Infectious Disease	\$5,000
Professor	Qi	Shouhua	English	The Reception of Western Modernist Drama in Contemporary China	\$5,000

Assistant Professor	Reynolds	Hannah	Biology	Improving Detection of White-Nose Syndrome Fungus with LAMP	\$5,000
Associate Professor	Robertson	Forest	Chemistry & Biochemistry	Synthesis of 2-Substituted Tetrahydrothiophenes, 2-Substituted Thietanes, and 1, 3-Dihydrobenzo[c]thiophenes	\$5,000
Assistant Professor	Santibanez-Lopez	Carlos	Biology	Venom Gland Transcriptomic Analyses of Neglected Neotropical Scorpion Families	\$4,977
Assistant Professor	Schofield	Jessica	Social Sciences	Justice for All? Examining the Selection Process of the International Criminal Court	\$4,972
Professor	Sharma	Divya	Justice & Law Administration	Visual Criminology and Police Wellness	\$0
Assistant Professor	Stankus	Brian	Chemistry & Biochemistry	Photolysis Kinetics of Atmospherically Relevant Molecules	\$4,000
Professor	Waldbuesser	Caroline	Communication & Media Arts	Are They Still Looking? The Influence of COVID-19 and Virtual Learning on Teacher Experiences	\$3,720
Associate Professor	Wong	Edwin	Biology	Relationship Between Water Quality Parameters and Toxic Cyanobacterial Blooms	\$4,100
					<b>\$152,702</b>
<b>TOTALS</b>					

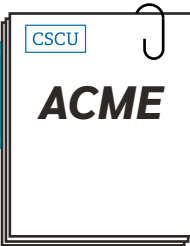
# Building on Student Success in Connecticut



2012

The legislature created real, substantial change for CT students with the passage of PA 12-40.

We are building on that success.



2021

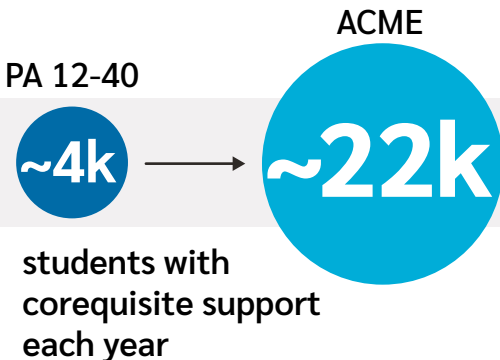
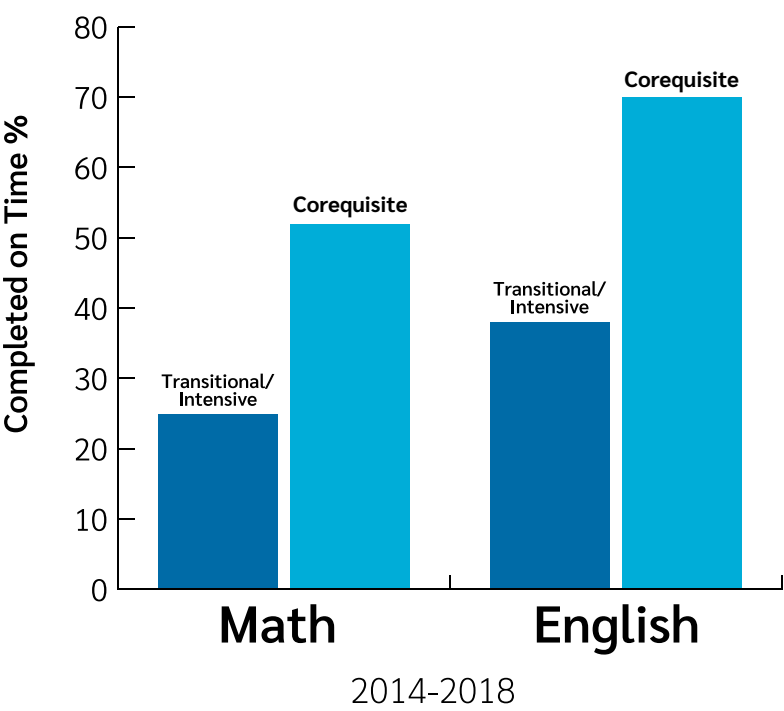
Alignment and Completion of Math + English is a new policy. ACME builds on what works in [PA 12-40](#) and what works in other states.

The reality is: full-scale corequisite support will help more students succeed.

Thanks to [PA 12-40](#), **36%** of students were diverted upward into embedded — or corequisite — classes.

These students are **twice as likely** to complete a gateway course.

Progress in Completing Gateway Courses under PA 12-40



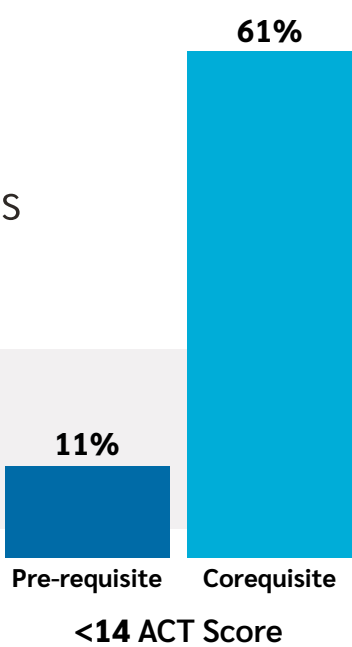
ACME wants to expand this successful model to cover all students.

Other states have proven that a corequisite model at full scale is:

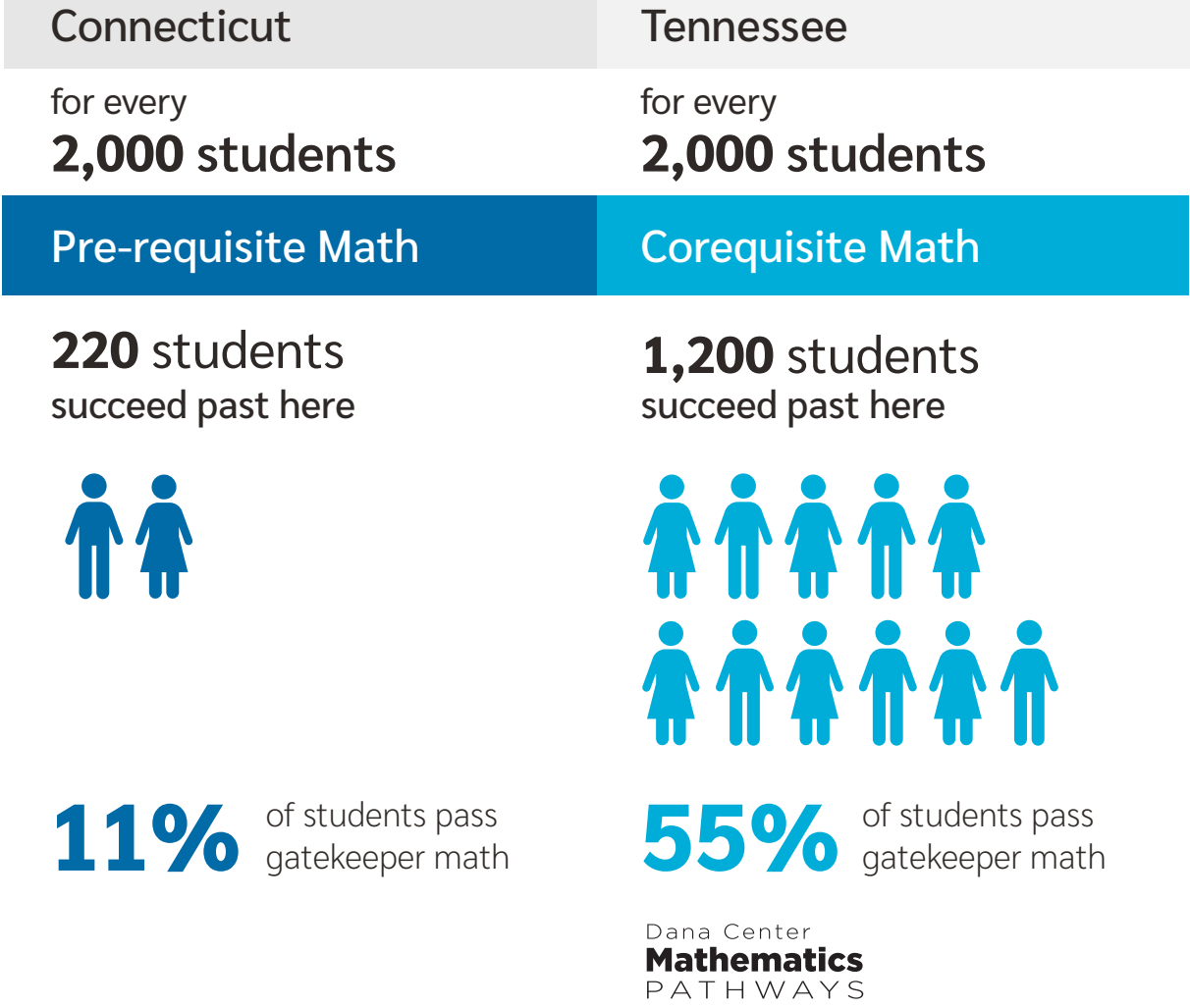
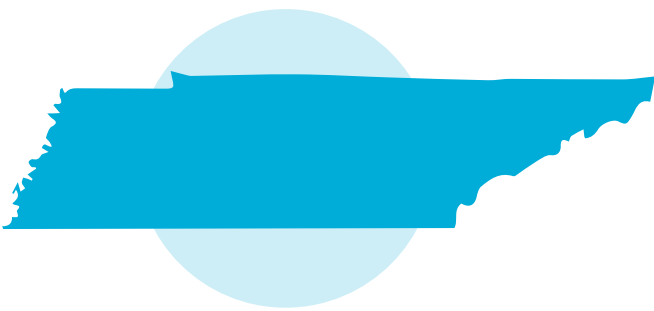
- ▶ **Better** for students from minoritized communities
- ▶ **Better** for students identified as least prepared

For example, Georgia students who scored the lowest on ACTs saw a 50-point increase under corequisite support.

University System of Georgia: % of Students Passing College-Level Math Classes

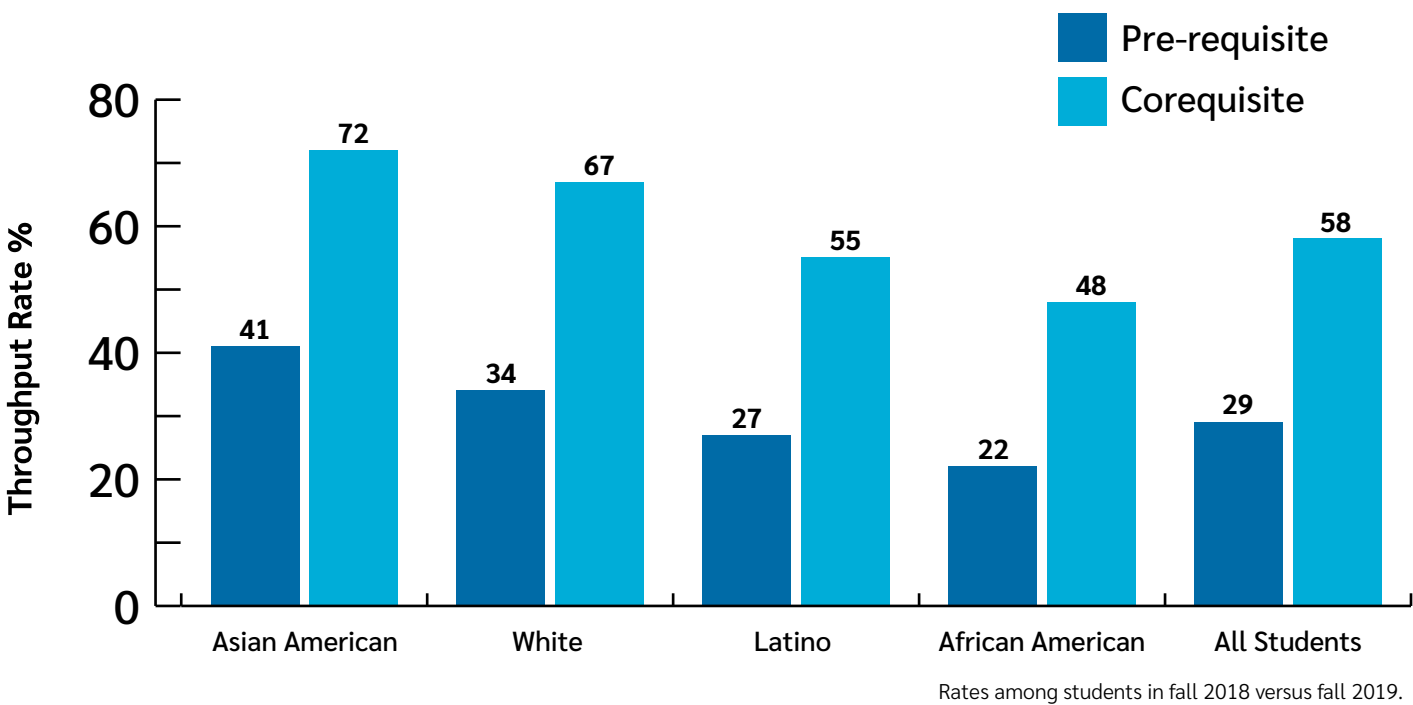


Let’s investigate the current Connecticut model versus the Tennessee model:



Who is corequisite support better for?

In California, as in many states, the corequisite model has shown to be better for all students.



ACME builds on what works. ...and it works for our students.

## Attachment G

Statement read into the record by Prof. Colena Sesanker:

The statement has been seen and endorsed by the chairs of the groups responsible for development of the ACME supports.

### The ACME policy

- is counter to the goals of transfer articulation, since it frustrates rather than facilitates transfer relationships. [see SCSU statement and CCSU endorsement]
- is not a true 'co-requisite' model of developmental supports as the course and supports are not jointly required? It is therefore *not* supported by the provided literature on the efficacy of co-requisite models for gateway courses.
- Is being established as board policy in the absence of any studies that provide support for such an implementation. (all supports optional + total elimination of standalone courses simultaneously)
- Does not identify a source of funding for its successful implementation, or even establish the level of resources that will be necessary for its success.
- Specifically excludes the possibility of providing the levels of support (including standalone and mandatory supports) that faculty responsible for its implementation consider necessary to ensure the quality of the curriculum for which they are responsible [NECHE standard 3.15]
- In particular, it does not provide the options deemed necessary for many students who have been underserved by K-12. It can therefore be seen as the abandonment of some potential students. For other students, it may cause harm when they fail out of courses that are designed inappropriately.
- Given that the final form of the policy document
  - is not the product of any of the discipline groups that are responsible for its implementation, neither is it the product of any faculty in the disciplines to which it applies,
  - that some of the fundamental concerns of these groups have yet to be fully addressed, and
  - that those groups therefore remain unconvinced of its efficacy,
  - the impact of these courses is far-reaching as they are designed to introduce the foundational skills for college-level workit stands as evidence that faculty are not, in fact, in control of curriculum.

Colena Sesanker, Ph.D